

ACCEPTED WASTE STREAMS

PO Box 10 Moorebank NSW 1875 T: 02 8761 0000 recycling@benedict.com.au

BENEDICT
BENEDICT
RECYCLING

www.benedictrecycling.com.au

Waste Accepted	Product Code	Belrose	Chipping Norton	Newcastle	Smeaton Grange	Wollongong
Mixed Building & Demolition Waste May contain man made rubbish such as plastic, paper/cardboard, cloth, metal, brick & concrete, timber, etc.	DEMO	✓	✓	✓	✓	✓
General Solid Waste Recyclable Soils/Wastes from Infrastructure projects. Tipping subject to test reports being supplied and approved.	GSREC	✓	✓	✓	✓	✓
Rubble - Soil / Clay Based Building & Demolition Waste consisting of a mixture of soil / clay, brick, concrete, asphalt. Must not contain any other material incl. light rubbish.	RUBBL	✓	✓	✓	✓	✓
Clean Segregated Concrete Clean Straight Concrete - Building & Demolition Waste - must not contain any other material. Less than 700mm x 700mm in size.	CONCC	✓	✓	✓	✓	✓
Clean Segregated Concrete - Large Clean Straight Concrete - Building & Demolition Waste - must not contain any other material. Greater than 700mm x 700mm in size.	CONCCL	✓	✓	✓	✓	✓
Mixed Brick & Concrete Mixed Brick & Concrete - must not contain any other material.	CONBK	✓	✓	✓	✓	✓
Clean Segregated Brick Clean Straight Brick - must not contain any other material.	BRICC	✓	✓	✓	✓	✓
Asphalt Clean segregated asphalt - must not contain any other material.	ASPHA	✓	✓	✓	✓	✓
VENM (Certified) Certified only - Virgin Excavated Natural Material Soil, clay, shale, sandstone, sand - must not contain any other material.	VENM	✓	✓	✓	✓	✓
ENM Excavated Natural Material - Must contain 98% (by weight) natural occurring materials. Tipping subject to test reports being supplied and approved.	ENM	✗	✗	✓	✓	✓
Timber Must not contain chemically treated timber - must not contain any other material.	TIMBE	✗	✓	✓	✓	✓
Vegetation Full Loads – Garden/Green Waste Only – No Stumps.	VEGET	✗	✗	✓	✓	✓
Gyprock Clean Gyprock - must not contain any other material.	GYPROCK	✓	✓	✓	✓	✓
Non-recyclable Waste Loads which contain 50% or more by volume of carpet/underlay, vegetation, astro turf, kopper logs, MDF, glass, horsehair plaster, heavy clay with rubbish.	NRECW	✓	✓	✓	✓	✓
Non-recyclable Waste - Light Polystyrene, plastics, insulation, foam packaging. Loads that contain 50% or more by volume of one or a mixture of any of the listed wastes.	NRECWL	✓	✓	✓	✓	✓
Cardboard Clean segregated loads of cardboard and paper - must not contain any other material.	CBOARD IN	✓	✓	✓	✗	✓

IMPORTANT! WE DO NOT ACCEPT

ASBESTOS, LIQUID WASTE, RADIOACTIVE WASTE, FOOD WASTE, FLAMMABLE MATERIAL, MEDICAL WASTE, HAZARDOUS MATERIALS

Note: Should any fire extinguishers or gas bottles be found in the tipped waste, charges will apply per item if the customer chooses not to reload.

ACCEPTED WASTE STREAMS

PO Box 10 Moorebank NSW 1875 T:02 8761 0000 recycling@benedict.com.au

BENEDICT
BENEDICT
RECYCLING

www.benedictrecycling.com.au

Waste Accepted	Product Code	Belrose	Chipping Norton	Newcastle	Smeaton Grange	Wollongong
Car Tyres	TYREC	Call us to find your nearest available site.				
Truck Tyres	TYRET					
Stumps (exceeding 500mm diameter)	STUMP					
Mattresses	MATTR					

WASTE ACCEPTED



CLEAN SEGREGATED CONCRETE CONCCL

Contains no other waste streams (including fines) but may contain a small amount of reinforcing steel or steel mesh. The concrete pieces should be no larger than 700mm x 700mm. If the concrete pieces exceed this size, then they are classified as CONCCL – concrete large.



CLEAN SEGREGATED CONCRETE BRICC

Brick classified loads can contain clay, terracotta or concrete brick and roof tiles with minimal fines. Brick classified loads should not contain soil, clay, timber, paper, plastic, vegetation or other manmade refuse.



MIXED BRICK & CONCRETE CONBK

The classification will contain mostly concrete and brick however can also contain some tile, asphalt and other hard durable materials (less than 700mm in size). CONBK can contain some fines however, it should not contain soil, clay, timber, paper, plastic, vegetation or other manmade refuse in the loads.



ASPHALT ASPHA

This usually comes to us in the form of reclaimed roads, pavements or parking lot surfaces. In some cases Asphalt may contain a small amount of concrete however, it should not contain other manmade materials.



VIRGIN EXCAVATED NATURAL MATERIAL VENM

VENM can be classified as sand, soil, shale, sandstone or rock. VENM material must not contain any manmade materials whatsoever.



TIMBER TIMBE

This waste product may consist of any type of clean timber, such as pallets or hardwood and may also consist of engineered timbers and residues derived from building, construction and demolition works.

IMPORTANT! WE DO NOT ACCEPT

ASBESTOS, LIQUID WASTE, RADIOACTIVE WASTE, FOOD WASTE, FLAMMABLE MATERIAL, MEDICAL WASTE, HAZARDOUS MATERIALS

Note: Should any fire extinguishers or gas bottles be found in the tipped waste, charges will apply per item if the customer chooses not to reload.

ACCEPTED WASTE STREAMS

PO Box 10 Moorebank NSW 1875 T:02 8761 0000 recycling@benedict.com.au

BENEDICT
BENEDICT
RECYCLING

www.benedictrecycling.com.au

WASTE ACCEPTED



RUBBLE RUBBL

Loads that mostly contain brick, tile, concrete, asphalt and natural rock. This stream will have some fines either natural or recycled, but must not contain any other wastes such as timber, plastic, paper, vegetation or other manmade refuse in the loads.



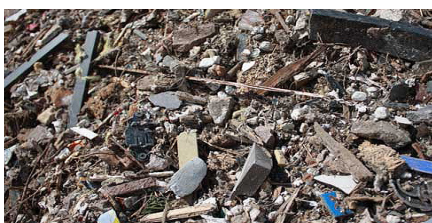
VEGETATION - GREEN WASTE VEGE

This should be garden green waste only and this waste should not contain any manmade material or tree stumps.



MIXED LIGHT DEMOLITION WASTE

This waste has a lighter density and is quite aerated. In many cases there will be no soil and few recoverables. The waste will consist of manmade products such as plastics, timber, glass, metal, cloth, etc. Much of this waste will go to landfill.



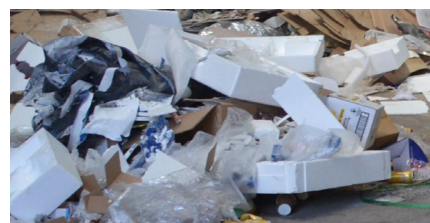
MIXED HEAVY DEMOLITION WASTE

This waste stream usually has a heavy density to the product. This product will not be aerated and recoverables when screened can be soils, aggregates for crushing, steel and timber.



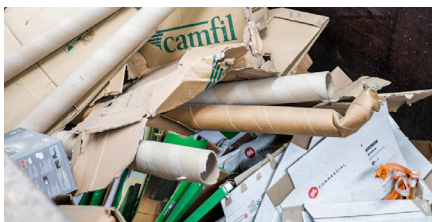
NON-RECYCLABLE WASTE NRECW

Loads which contain 50% or more by volume of carpet/underlay, vegetation, astro turf, kopper logs, MDF, glass, horsehair plaster, heavy clay with rubbish.



NON-RECYCLABLE WASTE - LIGHT NRECWL

Polystyrene, plastics, insulation, foam packaging. Loads that contain 50% or more by volume of one or a mixture of any of the listed wastes.



CARDBOARD CBOARD IN

Clean segregated loads of cardboard and paper - must not contain any other material.

IMPORTANT! WE DO NOT ACCEPT

ASBESTOS, LIQUID WASTE, RADIOACTIVE WASTE, FOOD WASTE, FLAMMABLE MATERIAL, MEDICAL WASTE, HAZARDOUS MATERIALS

Note: Should any fire extinguishers or gas bottles be found in the tipped waste, charges will apply per item if the customer chooses not to reload.