



What
Sydney's
made of®



BENEDICT.COM.AU

BENEDICT
BENEDICT

INDUSTRIES

SAND & GRAVEL

RECYCLING

COMPANY PROFILE

BENEDICT SAND & GRAVEL

DELIVERING TO THE GREATER SYDNEY REGION & NSW COUNTRY

BENEDICT SANDS

MENANGLE

BENEDICT SANDS

SANDY POINT

BENEDICT SANDS

MITTAGONG

APPIN SANDS

APPIN

COWRA QUARTZ

COWRA

BENEDICT RECYCLING PTY LTD

CHIPPING NORTON / BELROSE / NEWCASTLE / WOLLONGONG /

SMEATON GRANGE

COMING SOON: PENRITH

MAJOR DEVELOPMENT PROJECTS

GEORGES COVE VILLAGE & MARINA at Moorebank

THE CREAMERY at Menangle

The Benedict Industries group of companies is a Sydney-based, family-owned and managed Quarrying, Resources and Recycling Company.

Established in 1966, Benedict grew from a Haulage Contractor to one of the largest resellers of recycled and quarried materials in NSW and with recycling facilities in Chipping Norton, Belrose, Newcastle and Wollongong, and Quarries at Appin, Menangle, Mittagong, Cowra and Sandy Point. As a result, Benedict is increasing its market share in both of those sectors.

In 1978 the Company expanded into mining, acquiring a large sand resource at Chipping Norton (which it extracted until 1999) before embarking on a course of expanding its resource base that continues today.

The Company continues to acquire and develop new deposits for extraction throughout the Sydney region and supplies a comprehensive range of Sands, Soils, Sandstone, Decorative Aggregates and Recycled products.

Since 1991, Benedict has:

- acquired Menangle Sand & Soil Pty Ltd
- acquired Warringah Gravel & Stone Supplies
- established Benedict Recycling Pty Ltd
- acquired Mittagong Quarry
- acquired Cowra Quartz Quarry
- established Appin Sands (50/50 Joint Venture with Pacsons Quarries)
- acquired Sandy Point Quarry (near Liverpool)
- acquired and established Bowral Waste Centre (Bowral)





COMPANY PROFILE

Benedict Sand & Gravel

Major wholesaler / reseller of quarried, recycled and landscaping products from both Company owned and external quarries, with a distribution and delivery network, delivering to the greater Sydney Region and NSW Country.

Benedict Sands – Menangle

Sand and Soil extraction and processing. Sydney's largest supplier of soils, special golf course and bowling green blends, garden mixes and specialised sands. Controls more than 90% of Sydney's approved topsoil reserves.

Benedict Sands – Belrose

This Sandstone quarry has operated since 1966. Products include; sandstone products, screened sands, recycled aggregates, road bases, soils and garden mixes. Additionally, it serves as a Construction and Demolition waste Recycling Facility.

Benedict Sands – Sandy Point

This sandstone deposit has vast reserves. Available products include a range of sandstone products including Washed Concrete and Construction Sands, Armour rock, gabion spalls, landscaping rocks and

pebbles as well as a range of crushed products. It will play an increasingly critical part in construction sand supply given its centrality to the Sydney market.

Benedict Sands - Mittagong

This quarry produces concrete, asphalt, construction and brick sands for the Southern Highlands, South Coast and Southern Metropolitan Sydney. Acquired in December 2000, this Benedict Quarry has 25 years worth of remaining resources.

Appin Sands – Appin

This joint venture with Pacsons Quarries produces washed sands, brickie sands, soil blends and sandstone aggregates, and has 20 years worth of remaining reserves.

Benedict Sands – Cowra Quartz

This Quarry produces high quality decorative white and gold quartz pebble as well as coarse and fine washed sands. It produces a range of Bunker sands that are widely-regarded as the best performing in Australia.

Benedict Recycling

The main recycling facility is located at Riverside Road, Chipping Norton.

This resource recovery and waste management facility commenced operation in March 2008.

Feedstocks such as construction and demolition materials, commercial and industrial wastes as well as residues from other recycling facilities are sorted and recycled. We are currently producing coal-substitute fuels for Boral Berrima that, amongst other things allows Benedict Recycling's entire business network to be Carbon Negative, that is, better than "Net Zero", now.

Benedict Recycling has locations at:

- Belrose
- Chipping Norton
- Newcastle
- Penrith (Coming soon)
- Wollongong
- Smeaton Grange

Bowral Waste Centre

Acquired in 2019, this recycling facility and landfill allows waste recycling and disposal in the Wingecarribee Shire to be possible.



QUALITY

Benedict has adopted a company-wide Quality approach to all of the company's operations. The basis for which is the AS/NZS ISO9001 (2000) Quality Management System that introduces new customer satisfaction and end product conformity objectives to preceding Australian Standards.

Our Quality objective is to consistently supply our customers a quality of service and product that meets or exceeds their needs and expectations.

We believe this is realistic and achievable and have adopted the approach of 'doing the job right every time and on time'.

We aim to provide reliable technical and sales support services, with a focus on the production and delivery of quality quarry and landscape products to our customers.

Along with this, our objective is to use the company's Quality Management System to assist in achieving and exceeding our business goals and objectives.

Commitment to our policy and objectives is maintained by conducting training of our staff in regard to this policy and its subsequent Quality Manual, conducting reviews, internal audits, and other training and activities such as correction or prevention of non-conformities.

Quality, and thus customer satisfaction, is our total focus.

FLOYDE GILBERT
QUALITY MANAGER



OCCUPATIONAL HEALTH & SAFETY

We are committed to providing the safest possible working environment to all persons entering our sites - whether they are employees, contractors, customers or visitors. Benedict promotes a culture where workplace injuries are considered preventable. All of our people share the responsibility for implementing this policy - working together towards a safer workplace.

Benedict Policy Objectives

- Provide and maintain a safe and healthy workplace, safe plant and equipment and safe systems of work so far as practicable;
- Provide the necessary resources, information, instruction and training to enable effective implementation of this policy;
- Allocate Company resources to meet the commitments of the Policy;
- Work to eliminate hazards and practices that could cause incidents, injuries and illnesses;
- Communicate openly with government, and the community on safety issues, and contribute to the development of policies, legislation and regulations that may affect Benedict Operations;
- Involve and consult with all people who work for the Company on Health and Safety issues;
- Clearly define OH&S responsibilities for Managers, Employees and Contractors;
- Ensure that employees and suppliers of goods and services are informed about this policy and made aware of their OH&S responsibilities in relation to Benedict business;
- Ensure that it has management systems to effectively identify, control and monitor safety risks arising from its operations;

In order to uphold this policy, the Company is committed to developing, implementing, maintaining, and updating safe work practices through regular consultation with employees from all levels within the Company, as well as from external sources. It is fundamental that this policy, and the associated safety procedures, can be opened for review, improvement and clarification at any time. As a result, our workplace incidents/accidents, whilst already well below industry average, continue to further decline.

For us, we want our people to go home at day's end safely and uninjured.

E.A. DUPERE
NON EXECUTIVE DIRECTOR



WORKPLACE REHABILITATION

Benedict Industries and its related companies is committed to workplace rehabilitation as a strategy to support the return to work of injured or ill workers as soon as possible.

Workplace rehabilitation assists the healing process and provides the best opportunity for an early restoration of an employee's pre-injury or illness function.

We will achieve this by:

- Prevention of injury and illness by providing a safe and healthy working environment;
- Maintaining and implementing appropriate rehabilitation and return to work procedures;
- Ensuring managers, supervisors, employees and contractors are appropriately trained and informed of their rights and responsibilities under this policy;
- Complying with all applicable acts and regulations relating to workers' compensation and rehabilitation;
- Ensuring rehabilitation commences as soon as possible following an injury or illness in a manner consistent with medical advice;
- Providing suitable transitional duties where practicable, for an injured or ill worker, as an integral part of the injury management / return to work process;
- Consulting with all stakeholders to ensure the rehabilitation process operates smoothly and effectively;
- The development and implementation of applicable injury management programs and plans for injured or ill workers, in line with regulatory requirements.

DANA DUPERE
EXECUTIVE DIRECTOR



LEAVING THE LAND
IN BETTER SHAPE THAN
WHEN WE FOUND IT

BENEDICT REHABILITATED SITE - Heron Park

ENVIRONMENTAL

It is Benedict policy to achieve a high standard of environmental care in conducting its business as a Resources, Recycling and Quarried Products supply company contributing to society's material needs.

The Benedict approach to environmental management seeks continuous improvement in performance by taking account of evolving scientific knowledge and community expectations in direct consultation with government agencies.

Benedict is committed to:

- Comply with all applicable laws, regulations and standards; uphold the spirit of the law; and where laws do not adequately protect the environment, apply standards that minimise any adverse environmental impacts resulting from its operations, products or services;
- Communicate openly with government and the community on environmental issues, and contribute to the development of policies, legislation and regulations that may affect the Benedict Operations;
- Ensure that its employees and suppliers of goods and services are informed about this policy and aware of their environmental responsibilities in relation to the Benedict business;
- Ensure that it has management systems to identify, control and monitor environmental risks arising from its operations;
- Conduct research and establish programs to conserve resources, minimise wastes, improve processes and protect the environment.



Quality in every tonne



LOADING UP AT MITTAGONG SANDS

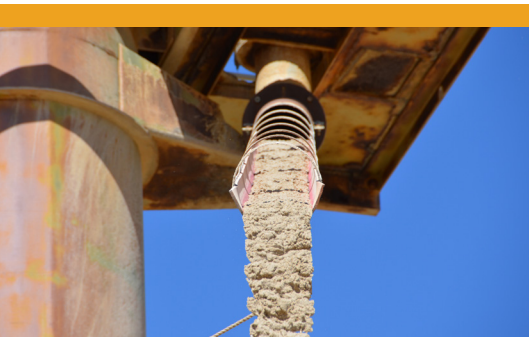
CREATING THE IDEAL SAND FOR YOUR NEXT PROJECT

At Benedict we take pride creating quality products for our customers; whether it be standard soil blends, or project specific manufactured materials that need to meet a specific requirement for a unique application.

Benedict strives to offer an extensive product range that features quality-assured quarried products.

Specific products we have developed for the everchanging marketplace include our non-slumping SmartMix® product range including the Biofiltration Media Package, our industry leading Thermal Resistivity Sand (which is now the industry standard) and our Premium White or Natural Quartz Bunker Sand to name a few.

Benedict, it's 'What Sydney's Made Of®'.



EXECUTIVE TEAM



Bob Lyon
CFO

With over 35 years of experience in the finance industry working in both listed and private businesses, Bob Lyon is the CFO of the Benedict group of companies and serves on the Board of a number of these companies.



Jim Douglas
Chief Operating Officer

Jim oversees the administrative and financial side of Benedict Industries and brings over 20 years' experience in operational and financial C-level roles. He has worked across industries including construction, technology, manufacturing and retail.



Brett Jarvis
Group Operations Manager

In 1997, Brett Jarvis started as a Belrose Excavator Operator and then a Quarry Manager at Menangle Sands. He is now the Group Operations Manager at Benedict Industries and oversees operations at all of the Company's quarries.



Mick Williams
General Manager - Recycling

Mick brings a wealth of product, sales and industry knowledge to the role of General Manager - Recycling. He started with Benedict in 2003 as Group Sales & Logistics Manager leading a team of internal and external Sales Executives and Managers.



Paul Arnold
Operations Manager
- Mittagong & Appin

Since 1991, Paul Arnold has been the Operations Manager at Mittagong and Appin Quarry that he also owns. Paul has been instrumental in building long term relationships internally and externally resulting in great outcomes for Benedict.



Dave Connor
Group Sales & Distribution Manager

In 2001 David started in internal sales, then progressed to external sales and then ex-bin sales manager. David is now the Group Sales and Distribution Manager, leading the external and internal sales teams. David's responsibilities include product and market development, and sales strategy.



Elke Dupere Rowan
Group Marketing Manager

Elke is the Group Marketing Manager at Benedict Industries and brings with her 15 years marketing and general management experience and 20 years experience within Benedict. Elke is responsible for marketing strategies that drive growth for the Benedict Group, as well as PR, Events and Sponsorships.

THE BOARD



Dana Dupere
Executive Director
Since 1991, Dana Dupere has been the Managing Director of Benedict. Her primary focus is the Group's Sales, Logistics, Finance and Administration functions.



Ernest Dupere
Non Executive Director

Ernest Dupere is the Director of Benedict and is responsible for operations and business development with a focus on applying the latest innovative technologies in the industry.



John Huntley Knox
Chairman of the Board
Non Executive Director

A Fellow of the Institute of Chartered Accountants, John has practised for over 50 years and specialises in business development, management and tax consultancy.



Steve Kirby
Non Executive Director

Steve is Managing Director of Australian Cane Farms Limited, one of Australia's largest sugar cane farm aggregations based near Townsville in Queensland. Steve is also co-founder of SISL Group, a Sydney based agribusiness focused funds manager. Prior to founding SISL in 2005, Steve was a Director of Rothschild Australia. In a 16 year career at Rothschild he held a variety of posts including Head of Structured Finance and Head of Agribusiness.



SALES & TECHNICAL REPRESENTATIVES

Allan Culey

Sales Executive, Benedict Sand & Gravel
Civil, Construction, Drainage, Councils

Ross Whiting

Mittagong Sands/Cowra Quartz Sales
Washed sand & quartz pebble Sales

Matthew Rooke

Sales Executive, Benedict Sand & Gravel

Brad Saul

Sales Executive, Benedict Sand & Gravel

Mick Crompton

Sales Executive, Benedict Sand & Gravel
Newcastle

Dean Byrne

Integrated Sales & Solutions Manager

Brad Morrin

Sales Manager, Recycling

Luke Patten

Sales Executive, Benedict Recycling

Peter Hill

Senior Account Executive, Recycling

Dayne Steggles

Newcastle Recycling Business Manager

Mitchell Thomson

Newcastle Recycling Sales Representative

QUALITY & COMPLIANCE

Peter Murdocca

Group Compliance Manager

Floyde Gilbert

Quality Manager

HR

Elizabeth Pasoski

HR Manager

LOGISTICS

Natalie Machen

Fleet Relationship Officer

OPERATIONS

Adam Springfield

Facility Operations Manager

Marko Zdrilic

Project Manager

SUPPORT SERVICES

Maria Messina

Credit & Customer Service Manager

Silvana Ritlian

Group Administration Manager

Jodi Brock

Internal Sales Manager

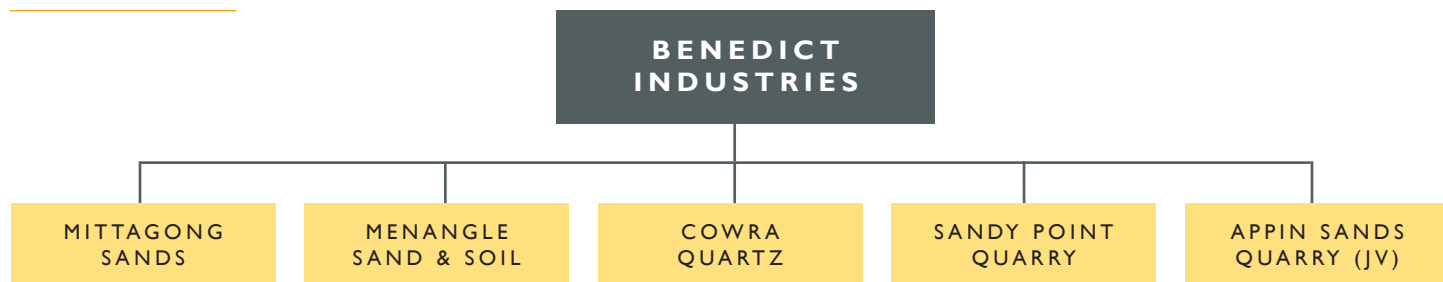
Lisa Xerri

Weighbridge Administration Manager

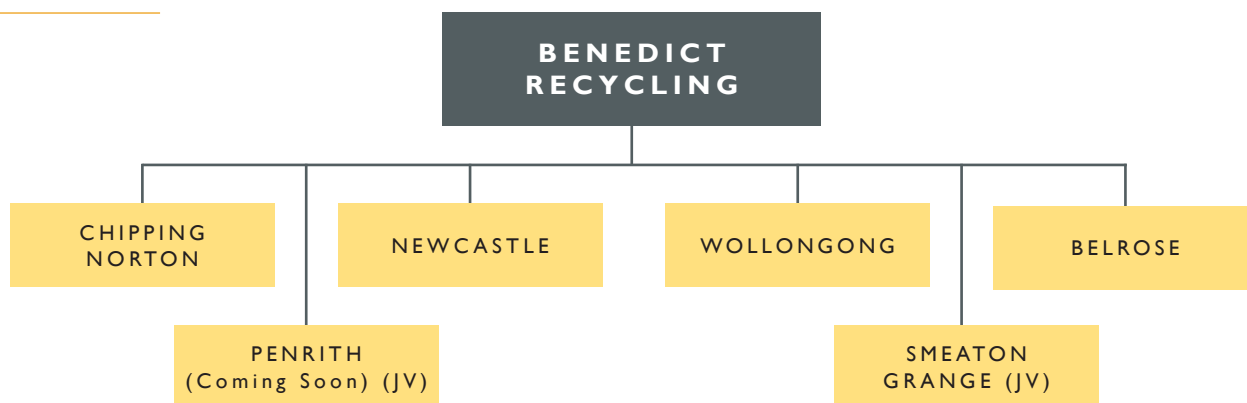


LEADING THE WAY - Benedict Industries Sales Team

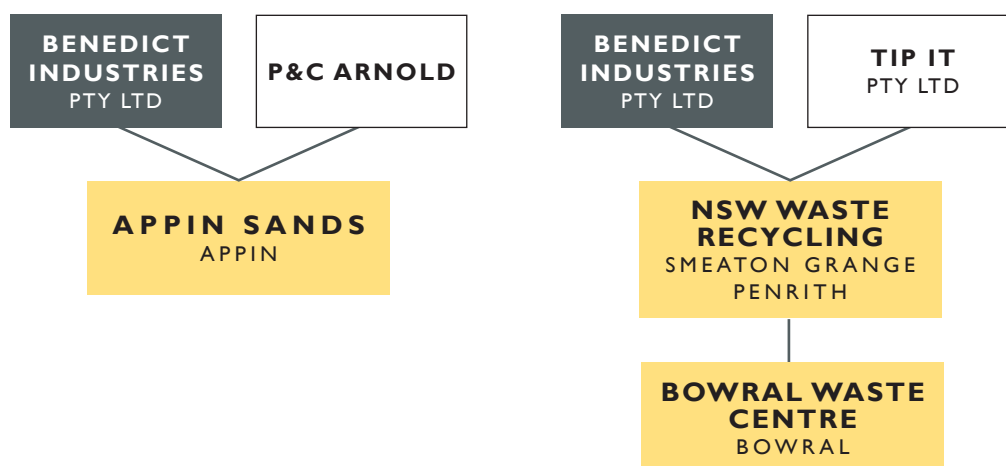
QUARRIES



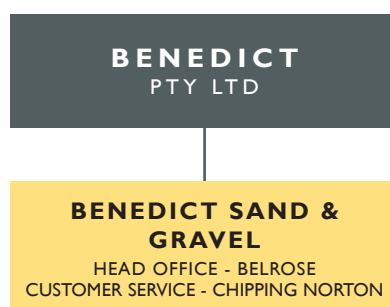
RECYCLING

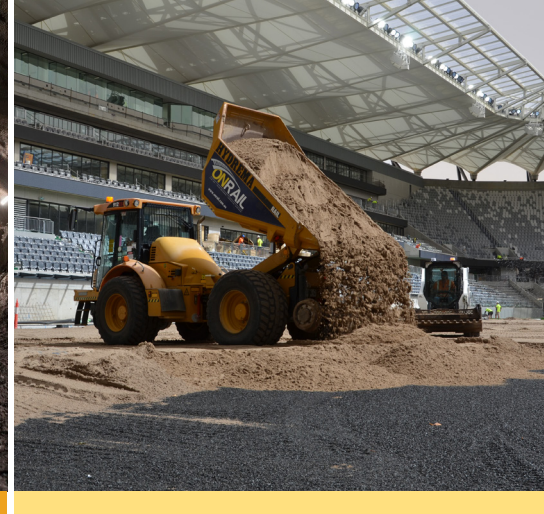


JOINT VENTURES



SUPPLY & DELIVER





MAJOR PROJECTS

MBK Intermodel

2017-Current | **CPB Contractors**

Supply in excess of 16,695 tonnes of unbound base, SPL90-250, G/MIXO, BED/SA and 10F/AGG for construction works for container shipping yard.

New M5 upgrade

2019 | **CDSJV (CPB, Dragados, Samsung JV)**

Supply in excess of 14,661 tonnes of variation of different materials for M5 upgrade, including 40F/AGG, unbound base, MBK Clay, BED/SA, 40SUB/R, Rta Mix and 50css.

Windsor Bridge Replacement

2019 | **Georgiou Group**

Supply in excess of 30,000 tonnes of Sandstone Rocks (different sizes), recycled road base, bio retention materials for bridge replacement and associated landscape works.

Western Sydney Stadium, Parramatta

2019 | **HG Sports Turf**

Supply in excess of 5,000 tonnes of SmartMix® 1 (Turf Rootzone - Active High Traffic Turf) for construction of reinforced turf profile for the new Stadium.

Sydney Light Rail

2017 | **Acciona**

Supply of Stabilised Sand and DGB, SmartMix® 3 (40mm Structural Soil), SmartMix® 6 (Native Garden Soil Mix) and SmartMix® 7 (Native Garden Sub-soil Mix) in excess of 20,000 tonnes.

Tuggerah Regional Sports Park

Supply of 36,000 tonnes of T/S2 ex Newcastle to Tuggerah Regional Sports Park for the construction of sports fields.

Northwest Rapid Transit

2018 | **Glascott Landscapes**

Supply in excess of 100,000 tonnes of FERT50, T/S2 ECOFINES for landscaping around new railway stations and railway corridor.

Silage Slabs

2018 | **Moxey Farms**

Supply in excess of 20,000 tonne of C33B/C34 for Sand used in concrete for silage slabs.

Northern Beaches Hospital

2015 | **Woburn Constructions, IDC Contracting, Ford Civil Contracting, Cherrie Civil Engineering**

Supply in excess of 8,000 tonne of pipe and electrical Bedding Sand, Crushed Sandstone, Roadbase and Aggregates.

Northern Road Upgrade - Stage 1 & 4

2016 | **Georgiou Group**

Supply in excess of 20,000 tonne of Bedding Sand and Filter Aggregates.

SIGNIFICANT SUPPLY CONTRACTS

MANUFACTURING

Washed Sand ex Appin, Sandy Point and Mittagong to **Boral Concrete and Concrete** for concrete production: 8,000-15,000 tonnes per month. (since 1977)

Washed Sand ex Appin and Sandy Point to **Fulton Hogan Pty Ltd** for Asphalt Production: 4,500 tonnes per month. (since 1994)

Washed Sand ex Mittagong and Appin to **Holcim** Concrete Plants, approximately 10,000 tonne per month.

CIVIL

Supply and delivery of various quarried and recycled materials and services to local Councils in the Sydney metropolitan region, Southern Highlands, Wollongong and Central Coast.

Current supplier of Compaction Sand for Pipe Embedment (WSA PS – 350, GRADE A), Filling Sand, Roadbase and Topsoil to Sydney Water for the Metropolitan, South Coast, Southern Highlands and Blue Mountains Regions. (since 1993)

Major supplier of Filling Sand to Integral Energy and Energy Australia. (since 1991)

RAIL

Ongoing cartage of rail ballast and spoil removal for the Rail Infrastructure Corporation (NSW State rail).

BIO-FILTRATION

Supply in excess of 40,000 tonnes per annum of Certified Bio-Filtration materials, including SmartMix® 9 (Biofiltration Filter Media), SmartMix® 10 (Biofiltration Transition Sand) and SmartMix® 11 (NoFines Drainage Gravel).

LANDSCAPING

Supply of over 30,000 tonnes of Premium Garden Mixes into retail and commercial landscape sectors. In excess of 20,000m³ per annum.

Supply of over 50,000 tonnes of Top-dressing materials ex Menangle Sands annually to various Sydney Councils.

Supply in excess of 35,000 tonnes per annum of quality assured sportsfield growing media and drainage aggregates.



**FIRST CHOICE
FOR QUARRIED AND
RECYCLED PRODUCTS**

WHERE TO FIND US

HEAD OFFICE

Support Services & Finance

11 Narabang Way, Austlink Park
Belrose NSW 2085

PO Box 431
Frenchs Forest NSW 1640

DIRECT NUMBERS

Sales & Orders	9986 3500
Logistics	8761 0099
Recycling Head Office	8761 0000
Accounts Receivable	9986 3755
Accounts Payable	9986 3501

BENEDICT.COM.AU

BENEDICT RECYCLING Chipping Norton

33-39 Riverside Road
Chipping Norton NSW 2170

PO Box 10
Moorebank NSW 2170

BENEDICT RECYCLING

BENEDICT RECYCLING BELROSE

End of Challenger Drive,
Belrose NSW

Manager Lucas Jones
Phone (02) 9450 2512

Operating Hours
MON - FRI: 6am - 5pm
SAT: 6am - 1pm



BENEDICT RECYCLING CHIPPING NORTON

33-39 Riverside Road,
Chipping Norton NSW

Manager Christopher Arcuri
Phone (02) 8761 0000

Operating Hours
MON - FRI: 6am - 6pm
SAT: 6am - 2pm
SUN: 8am - 2pm



BENEDICT RECYCLING NEWCASTLE

1a McIntosh Drive,
Mayfield West NSW

Manager Heath Nowlan
Phone (02) 4960 9977

Operating Hours
MON - FRI: 6am - 5.30pm
SAT: 6am - 2pm



BENEDICT RECYCLING WOLLONGONG

171-173 Five Islands Road,
Unanderra NSW

Manager Dean Springfield
Phone (02) 4274 1322

Operating Hours
MON - FRI: 6am - 4.30pm
SAT: 6am - 2pm



BENEDICT RECYCLING SMEATON GRANGE

52 Anderson Road,
Smeaton Grange NSW

Manager Paul Skinner
Phone (02) 8761 0019

Operating Hours
MON - FRI: 6am - 4.30pm
SAT: 6am - 2pm



BENEDICT QUARRIES

APPIN SANDS APPIN

Appin Road, Appin NSW

Manager Mark Arnold
Phone 0425 789 877

Operating Hours
MON - FRI: 6am - 4pm
SAT: 6am - 12pm

BENEDICT SANDS COWRA QUARTZ

Glen Logan Road, Cowra NSW

Manager Mark Morris
Phone (02) 6341 3888

Operating Hours
MON - FRI: 6.30am - 4pm
SAT: 6.30am - 12pm

BENEDICT SANDS MENANGLE

31 Menangle Road, Menangle NSW

Manager Michael Holz
Phone (02) 4633 8239

Operating Hours
MON - FRI: 6am - 4pm
SAT: 6am - 12pm



BENEDICT SANDS MITTAGONG

924-926 Wombeyan Caves Road,
High Range NSW

Manager Paul Holz
Phone (02) 4878 5159

Operating Hours
MON - FRI: 6am - 4pm
SAT: 6am - 12pm

BENEDICT SANDS SANDY POINT

14309 Heathcote Road,
Sandy Point NSW

Manager Rod Holz
Phone 0438 336 891

Operating Hours
MON - FRI: 6am - 4pm
SAT: 6am - 12pm