



What
Sydney's
made of[®]



BENEDICT.COM.AU

BENEDICT
BENEDICT

INDUSTRIES
SAND & GRAVEL
RECYCLING NEWCASTLE
bowral WASTE CENTRE

COMPANY PROFILE

BENEDICT SAND & GRAVEL

DELIVERING TO THE GREATER SYDNEY REGION & NSW COUNTRY

BENEDICT SANDS

MENANGLE

BENEDICT SANDS

SANDY POINT

BENEDICT SANDS

MITTAGONG

APPIN SANDS

APPIN

COWRA QUARTZ

COWRA

BENEDICT RECYCLING NEWCASTLE PTY LTD

NEWCASTLE

BOWRAL WASTE CENTRE

BOWRAL

MAJOR DEVELOPMENT PROJECTS

GEORGES COVE VILLAGE & MARINA at Moorebank

THE SOUTHERN GATEWAY BUSINESS PARK at Menangle

The Benedict Industries group of companies is a Sydney-based, family-owned and managed Quarrying, Resources and Recycling Company.

Established in 1966, Benedict grew from a Haulage Contractor to one of the largest resellers of recycled and quarried materials in NSW with a recycling facility in Newcastle and Quarries at Appin, Menangle, Mittagong, Cowra and Sandy Point.

In 1978 the Company expanded into mining, acquiring a large sand resource at Chipping Norton (which it extracted until 1999) before embarking on a course of expanding its resource base that continues today.

The Company continues to acquire and develop new deposits for extraction throughout the Sydney region and supplies a comprehensive range of Sands, Soils, Sandstone, Decorative Aggregates and Recycled products. With our Supply & Deliver business, BSG: If we don't make it, we can source it!

Since 1991, Benedict has:

- acquired Menangle Sand & Soil Pty Ltd
- acquired Warringah Gravel & Stone Supplies
- acquired Mittagong Quarry
- acquired Cowra Quartz Quarry
- established Appin Sands (50/50 Joint Venture with Pacsons Quarries)
- acquired Sandy Point Quarry (near Liverpool)
- established Benedict Recycling (partially sold in December 2026)
- acquired and established Bowral Waste Centre (Bowral)





COMPANY PROFILE

Benedict Sand & Gravel

Major wholesaler / reseller of quarried, recycled and landscaping products from both Company owned and external quarries, with a distribution and delivery network, delivering to the greater Sydney Region and NSW Country.

Benedict Sands – Menangle

Sand and Soil extraction and processing. Sydney's largest supplier of soils, special golf course and bowling green blends, garden mixes and specialised sands. Controls more than 90% of Sydney's approved topsoil reserves.

Benedict Sands – Sandy Point

This sandstone deposit has vast reserves. Available products include a range of sandstone products including Washed Concrete and Construction Sands, Armour rock, gabion spalls, landscaping rocks and pebbles as well as a range of crushed products. It will play an increasingly critical part in construction sand supply given its centrality to the Sydney market.

Benedict Sands - Mittagong

This quarry produces concrete, asphalt, construction and brick sands for the Southern Highlands, South Coast and Southern Metropolitan Sydney. Acquired in December 2000, this Benedict Quarry has 25 years worth of remaining resources.

Appin Sands – Appin

This joint venture with Pacsons Quarries produces washed sands, brickie sands, soil blends and sandstone aggregates, and has 20 years worth of remaining reserves.

Benedict Sands – Cowra Quartz

This Quarry produces high quality decorative white and gold quartz pebble as well as coarse and fine washed sands. It produces a range of Bunker sands that are widely-regarded as the best performing in Australia.

Benedict Recycling Newcastle

The recycling facility is located at 1a McIntosh Drive, Mayfield West, and commenced operation in April 2016.

It offers a range of recycling options and is Consented for some 315,000 Tonnes PA of feedstocks such as construction and demolition materials, commercial and industrial wastes as well as residues from other recycling facilities.

Bowral Waste Centre

Acquired in 2019, this resource recovery centre and landfill enables resource recovery and waste disposal across the Wingecarribee Shire.



QUALITY

Benedict has adopted a company-wide Quality approach to all of the company's operations. The basis for which is the AS/NZS ISO9001 (2000) Quality Management System that introduces new customer satisfaction and end product conformity objectives to preceding Australian Standards.

Our Quality objective is to consistently supply our customers a quality of service and product that meets or exceeds their needs and expectations.

We believe this is realistic and achievable and have adopted the approach of 'doing the job right every time and on time'.

We aim to provide reliable technical and sales support services, with a focus on the production and delivery of quality quarry and landscape products to our customers.

Along with this, our objective is to use the company's Quality Management System to assist in achieving and exceeding our business goals and objectives.

Commitment to our policy and objectives is maintained by conducting training of our staff in regard to this policy and its subsequent Quality Manual, conducting reviews, internal audits, and other training and activities such as correction or prevention of non-conformities.

Quality, and thus customer satisfaction, is our total focus.

Quality in every tonne



LOADING UP AT MITTAGONG SANDS

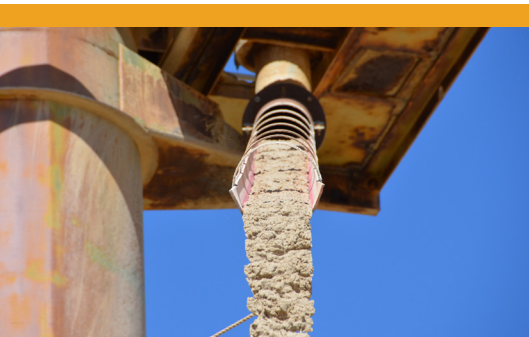
CREATING THE IDEAL SAND FOR YOUR NEXT PROJECT

At Benedict we take pride creating quality products for our customers; whether it be standard soil blends, or project specific manufactured materials that need to meet a specific requirement for a unique application.

Benedict strives to offer an extensive product range that features quality-assured quarried products.

Specific products we have developed for the everchanging marketplace include our non-slumping SmartMix® product range including the Biofiltration Media Package, our industry leading Thermal Resistivity Sand (which is now the industry standard) and our Premium White or Natural Quartz Bunker Sand to name a few.

Benedict, it's 'What Sydney's Made Of®'.





OCCUPATIONAL HEALTH & SAFETY

We are committed to providing the safest possible working environment to all persons entering our sites - whether they are employees, contractors, customers or visitors. Benedict promotes a culture where workplace injuries are considered preventable. All of our people share the responsibility for implementing this policy - working together towards a safer workplace.

Benedict Policy Objectives

- Provide and maintain a safe and healthy workplace, safe plant and equipment and safe systems of work so far as practicable;
- Provide the necessary resources, information, instruction and training to enable effective implementation of this policy;
- Allocate Company resources to meet the commitments of the Policy;

- Work to eliminate hazards and practices that could cause incidents, injuries and illnesses;
- Communicate openly with government, and the community on safety issues, and contribute to the development of policies, legislation and regulations that may affect Benedict Operations;
- Involve and consult with all people who work for the Company on Health and Safety issues;
- Clearly define OH&S responsibilities for Managers, Employees and Contractors;
- Ensure that employees and suppliers of goods and services are informed about this policy and made aware of their OH&S responsibilities in relation to Benedict business;

- Ensure that it has management systems to effectively identify, control and monitor safety risks arising from its operations;

In order to uphold this policy, the Company is committed to developing, implementing, maintaining, and updating safe work practices through regular consultation with employees from all levels within the Company, as well as from external sources. It is fundamental that this policy, and the associated safety procedures, can be opened for review, improvement and clarification at any time. As a result, our workplace incidents/accidents, whilst already well below industry average, continue to further decline.

For us, we want our people to go home at day's end safely and uninjured.

E.A. DUPERE
DIRECTOR/OWNER



WORKPLACE REHABILITATION

Benedict Industries and its related companies is committed to workplace rehabilitation as a strategy to support the return to work of injured or ill workers as soon as possible.

Workplace rehabilitation assists the healing process and provides the best opportunity for an early restoration of an employee's pre-injury or illness function.

We will achieve this by:

- Prevention of injury and illness by providing a safe and healthy working environment;
- Maintaining and implementing appropriate rehabilitation and return to work procedures;
- Ensuring managers, supervisors, employees and contractors are appropriately trained and informed of their rights and responsibilities under this policy;
- Complying with all applicable acts and regulations relating to workers' compensation and rehabilitation;
- Ensuring rehabilitation commences as soon as possible following an injury or illness in a manner consistent with medical advice;
- Providing suitable transitional duties where practicable, for an injured or ill worker, as an integral part of the injury management / return to work process;
- Consulting with all stakeholders to ensure the rehabilitation process operates smoothly and effectively;
- The development and implementation of applicable injury management programs and plans for injured or ill workers, in line with regulatory requirements.

DANA DUPERE
DIRECTOR/OWNER



BENEDICT REHABILITATED SITE - Heron Park

ENVIRONMENTAL

It is Benedict policy to achieve a high standard of environmental care in conducting its business as a Resources, Recycling and Quarried Products supply company contributing to society's material needs.

The Benedict approach to environmental management seeks continuous improvement in performance by taking account of evolving scientific knowledge and community expectations in direct consultation with government agencies.

Benedict is committed to:

- Comply with all applicable laws, regulations and standards; uphold the spirit of the law; and where laws do not adequately protect the environment, apply standards that minimise any adverse environmental impacts resulting from its operations, products or services;
- Communicate openly with government and the community on environmental issues, and contribute to the development of policies, legislation and regulations that may affect the Benedict Operations;
- Ensure that its employees and suppliers of goods and services are informed about this policy and aware of their environmental responsibilities in relation to the Benedict business;
- Ensure that it has management systems to identify, control and monitor environmental risks arising from its operations;
- Conduct research and establish programs to conserve resources, minimise wastes, improve processes and protect the environment.



EXECUTIVE TEAM



Jeremy McLennan
CFO

Jeremy McLennan is CFO of the Benedict Industries Group, with over 15 years' experience in senior finance leadership roles. He brings strong commercial expertise across construction, infrastructure, manufacturing, industrial services, and project-based businesses, supporting financial strategy, governance, capital management, and sustainable growth.



Elke Dupere Rowan
Chief Operation Operator

Elke as the Chief Operation Operator oversees the Administrative, IT, Marketing, People and Culture at Benedict. Elke brings over 20 years' marketing and general management experience and over 25 years' experience within Benedict. Elke is responsible for strategies that drive growth and efficiencies within the Benedict Group of Companies.



Paul Arnold
Operations Manager

- Mittagong & Appin

Since 1991, Paul Arnold has been the Operations Manager at Mittagong and Appin Quarry that he also owns. Paul has been instrumental in building long term relationships internally and externally resulting in great outcomes for Benedict.



Brett Jarvis
Group Operations Manager

In 1997, Brett Jarvis started as a Belrose Excavator Operator and then moved into the position of Quarry Manager at our Belrose Quarry. Brett then relocated to the Southern Highlands and became Quarry Manager at Menangle Sand and Soil. In 2004 Brett transitioned into the Group Operations Managers role at Benedict Industries and oversees all operations at the Company's Quarries, along with Benedict Recycling Newcastle and Bowral Resource Recovery Centre. Brett is a fellow member of the Institute of Quarrying and is currently Deputy Chairperson of the IQA Southern Region Sub Branch.



Dave Connor
Group Sales & Distribution Manager

In 2001 David started in internal sales, then progressed to external sales, technical manager for horticulture and ex-bin sales manager. David is now the Group Sales and Distribution Manager, leads the external sales team and is responsible for all sales across Benedict Sand & Gravel, Benedict Industries and Bowral Resource Recovery Centre. David's responsibilities include contract management, product and market development and sales strategy.

THE BOARD



Dana Dupere
Director/Owner
Dana's primary focus is the Group's Sales, Logistics, Finance and Administration functions.



Ernest Dupere
Director/Owner
Ernest is responsible for Company operations and Business Development.



John Huntley Knox
Board Member

A Fellow of the Institute of Chartered Accountants, John has practised for over 50 years and specialises in business development, management and tax consultancy.



Steve Kirby
Chairman of the Board and Non-executive Director
Steve is Managing Director of Australian Cane Farms Limited, one of Australia's

largest sugar cane farm aggregations based near Townsville in Queensland. Steve is also co-founder of SISL Group, a Sydney based agribusiness focused funds manager. Prior to founding SISL in 2005, Steve was a Director of Rothschild Australia. In a 16 year career at Rothschild he held a variety of posts including Head of Structured Finance and Head of Agribusiness.



SALES & TECHNICAL REPRESENTATIVES

Allan Culey

Sales Executive, Benedict Sand & Gravel
Civil, Construction, Drainage, Councils

Ross Whiting

Mittagong Sands/Cowra Quartz Sales
Washed sand & quartz pebble Sales

Matthew Rooke

Business Development Manager -
Horticulture, Benedict Sand & Gravel
& Bowral

Brad Saul

Sales Executive, Benedict Sand & Gravel

Mick Crompton

Sales Executive, Benedict Sand & Gravel
Newcastle

Dean Byrne

Integrated Sales & Solutions Manager
Benedict Sand & Gravel & Bowral

Dayne Steggles

Newcastle Recycling Business Manager

QUALITY & COMPLIANCE

Peter Murdocca

Group Compliance Manager

Daniel Beattie

Laboratory and Quality Assurance

HR

Jodie Flint

People & Culture Manager

Yasmin Wannous

Recruitment Business Partner

LOGISTICS

Emma Whyte

Allocations & Compliance Officer

OPERATIONS

Marko Zdrilic

Project Manager

SUPPORT SERVICES

Maria Messina

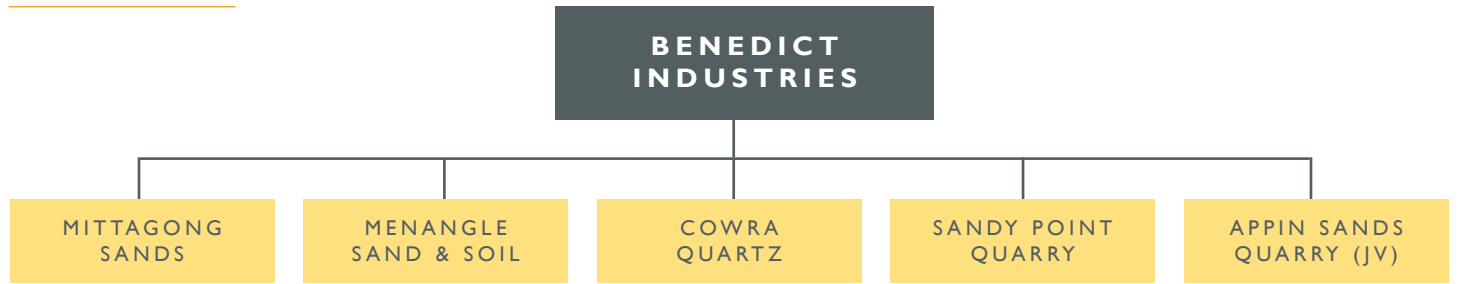
Credit & Customer Service Manager

Jodi Brock

Sales Support Manager



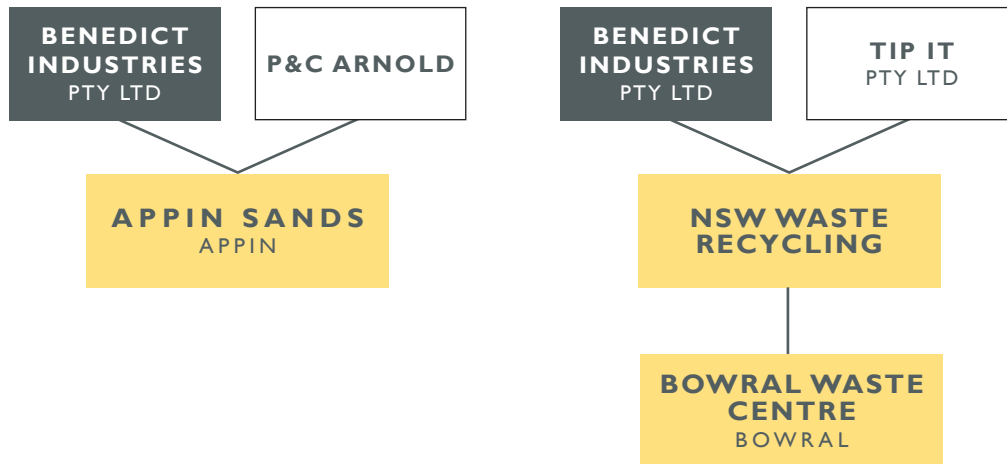
QUARRIES



RECYCLING



JOINT VENTURES



SUPPLY & DELIVER





MAJOR PROJECTS

St George Illawarra Dragons Sportsfield Construction

2025 | *Pitchcraft*

Supply of SmartMix® I – Active High-Traffic Rootzone and SmartMix® I I - No Fines Drainage Gravel for sportsfield construction. In excess of 13,000 tonnes.

M7/M12 Integration Project

2025 - 2026 | *John Holland, Ecodynamics*

Supply of various civil and landscape products, including 20DGB, Heavily Bound Base, SmartMix6 & TfNSW R178 Topsoil utilised for spray seeding on batters. In excess of 60,000 tonnes.

M6 – Stage I

2022-onwards | *CPB/Ghella/UGL & Regal Innovations*

Supply of various civil and landscape products, including Rail Ballast, Road Base, Drainage Aggregates and various Benedict SmartMix® products including SmartMix® 6 Native Organic Planting Mix for TfNSW R178 planting applications. In excess of 50,000 tonnes.

Warringah Freeway

2023 - 2025 | *CPB/Downer JV*

Supply of Drainage Rock, R1 I Bedding Sand, 20DGB & SMZ materials under contract. In excess of 50,000 tonnes.

Western Sydney Airport (Aerowest)

2023 - 2025 | *BMD/Seymour Whyte JV, Acciona, B&K Revegetation*

Thermal Resistivity Sand, Biofiltration Media (SmartMix® 9, 10, 11), Forestry Organics and Drainage Rock. In excess of 40,000t.

Parramatta Light Rail – Stage 2

2024-Current | *John Holland*

Supply under contract of Heavily Bound Base, Drainage Rock, 20DGB and R44 Sandstone Fill. In excess of 30,000 tonnes.

New M5 upgrade

2019 | *CDSJV (CPB, Dragados, Samsung JV)*

Supply in excess of 14,661 tonnes of variation of different materials for M5 upgrade, including 40F/ AGG, unbound base, MBK Clay, BED/SA, 40SUB/R, Rta Mix and 50css.

Windsor Bridge Replacement

2019 | *Georgiou Group*

Supply in excess of 30,000 tonnes of Sandstone Rocks (different sizes), recycled road base, bio retention materials for bridge replacement and associated landscape works.

Western Sydney Stadium, Parramatta

2019 | *HG Sports Turf*

Supply in excess of 5,000 tonnes of SmartMix® I (Turf Rootzone - Active High Traffic Turf) for construction of reinforced turf profile for the new Stadium.

Sydney Light Rail

2017 | *Acciona*

Supply of Stabilised Sand and DGB, SmartMix® 3 (40mm Structural Soil), SmartMix® 6 (Native Garden Soil Mix) and SmartMix® 7 (Native Garden Sub-soil Mix) in excess of 20,000 tonnes.

Northern Beaches Hospital

2015 | *Woburn Constructions, IDC Contracting, Ford Civil Contracting, Cherrie Civil Engineering*

Supply in excess of 8,000 tonne of pipe and electrical Bedding Sand, Crushed Sandstone, Roadbase & Aggregates.

SIGNIFICANT SUPPLY CONTRACTS

MANUFACTURING

Washed Sands for Concrete Production (AS2758.1) ex Sandy Point, Appin & Mittagong for Boral, Concrete, Heidelberg and Holcim.

Washed Sand ex Appin and Sandy Point to Fulton Hogan Pty Ltd for Asphalt Production.

Washed Sand ex Mittagong and Appin to Bains Masonry for Retaining and Structural Blocks.

CIVIL

Supply and delivery of various quarried and recycled materials and services to local Councils in the Sydney metropolitan region, Southern Highlands, Wollongong and Central Coast.

Current supplier of Compaction Sand for Pipe Embedment (WSA PS – 350, GRADE A), Filling Sand, Roadbase and Topsoil to Sydney Water for the Metropolitan, South Coast, Southern Highlands and Blue Mountains Regions. (since 1993)

Major supplier of Filling Sand to Integral Energy and Energy Australia. (since 1991)

RAIL

Ongoing cartage of rail ballast and spoil removal for the Rail Infrastructure Corporation (NSW State rail).

BIO-FILTRATION

Supply in excess of 40,000 tonnes per annum of Certified Bio-Filtration materials, including SmartMix® 9 (Biofiltration Filter Media), SmartMix® 10 (Biofiltration Transition Sand) and SmartMix® 11 (NoFines Drainage Gravel).

LANDSCAPING

Supply of Premium Garden Mixes into retail and commercial landscape sectors. In excess of 30,000 tonnes per annum.

Supply of Top-dressing materials annually to various Sydney Councils. In excess of 25,000 tonnes per annum.

Supply of quality assured sportsfield growing media and drainage aggregates for Sportsfield Construction Projects. In excess of 35,000 tonnes per annum



**FIRST CHOICE
FOR QUARRIED AND
RECYCLED PRODUCTS**

WHERE TO FIND US

BENEDICT.COM.AU

HEAD OFFICE

Support Services & Finance

11 Narabang Way, Austlink Park
Belrose NSW 2085

PO Box 431
Frenchs Forest NSW 1640

DIRECT NUMBERS

Sales & Orders	(02) 9986 3500
Allocations	(02) 8761 0099
Accounts Receivable	(02) 9986 3755
Accounts Payable	(02) 9986 3501
Weighbridge Pricing	(02) 8438 9444
BSG Pricing	(02) 8438 9490

BENEDICT QUARRIES

APPIN SANDS APPIN

Appin Road, Appin NSW

Site Manager Mark Arnold
Phone 0425 789 877

Operating Hours
MON - FRI: 6am - 4pm
SAT: 6am - 12pm

BENEDICT SANDS COWRA QUARTZ

Glen Logan Road, Cowra NSW

Site Manager Jason Lewis
Phone (02) 6341 3888

Operating Hours
MON - FRI: 6.30am - 4pm
SAT: CLOSED

BENEDICT SANDS MENANGLE

31 Menangle Road, Menangle NSW

Site Manager Michael Holz
Phone (02) 4633 8239

Operating Hours
MON - FRI: 6am - 4pm
SAT: 6am - 12pm



BENEDICT SANDS MITTAGONG

924-926 Wombeyan Caves Road,
High Range NSW

Site Manager Paul Holz
Phone (02) 4878 5159

Operating Hours
MON - FRI: 6am - 4pm
SAT: 6am - 12pm

BENEDICT SANDS SANDY POINT

14309 Heathcote Road,
Sandy Point NSW

Site Manager Rod Holz
Phone 0438 336 891

Operating Hours
MON - FRI: 6am - 4pm
SAT: 6am - 12pm

BENEDICT RECYCLING NEWCASTLE

1a McIntosh Drive,
Mayfield West NSW

Site Manager Heath Nowlan
Phone (02) 4960 9977

Operating Hours
MON - FRI: 6am - 5.30pm
SAT: 6am - 2pm



BOWRAL WASTE CENTRE

8 Kiama St,
Bowral NSW 2576

Site Manager Rod Johnston
Phone 0498 027 727

Operating Hours
MON - FRI: 7am - 4pm
SAT: 8am - 1pm

