

## **APPENDIX A: DEVELOPMENT CONSENT**

---

# Development Consent

## Section 4.38 of the *Environmental Planning and Assessment Act 1979*

As delegate of the Minister for Planning under delegation executed on 11 October 2017, I approve the Development Application referred to in Schedule 1, subject to the conditions specified in Schedule 2.

These conditions are required to:

- prevent, minimise, and/or offset adverse environmental impacts
- set standards and performance measures for acceptable environmental performance
- require regular monitoring and reporting
- provide for the ongoing environmental management of the Development.



Anthea Sargeant  
Executive Director  
Key Sites and Industry Assessments

Sydney 13 March, 2018

---

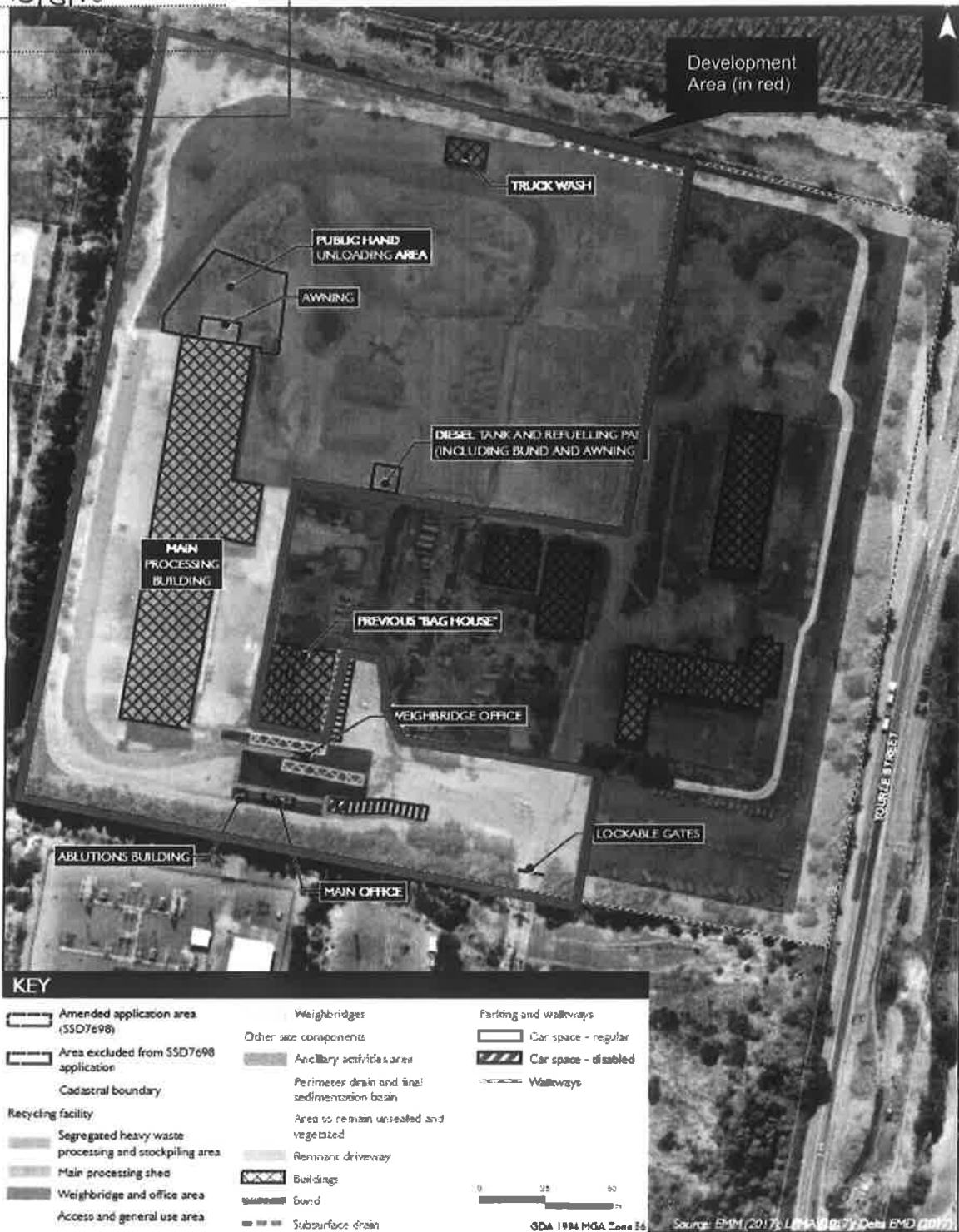
### SCHEDULE 1

Application No:	SSD 7698
Applicant:	Benedict Recycling Pty Ltd
Consent Authority:	Minister for Planning
Land:	Lot 1 DP 874109 1a McIntosh Drive, Mayfield West
Development:	Increase in processing capacity of an existing resource recovery facility to 315,000 tonnes per year of general solid waste (non-putrescible) including construction and demolition waste and commercial and industrial waste.

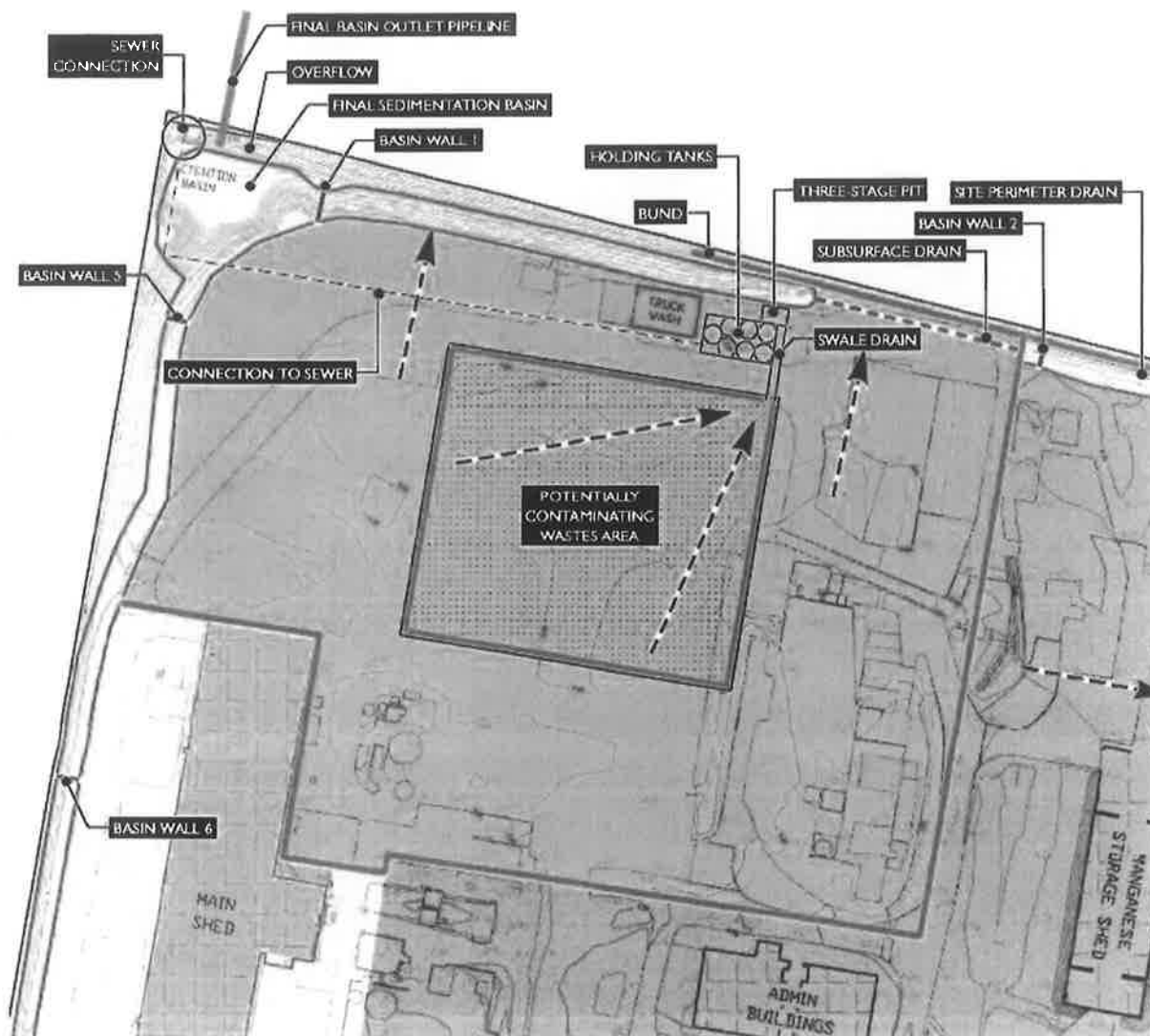



### APPENDIX A PLANS

#### Development Layout Plan




**Location of Surface Water Management Infrastructure**



	NSW GOVERNMENT Planning
	Issued under the Environmental Planning and Assessment Act 1979
	Approved Application No. <u>7698</u>
	granted on the <u>13/3/18</u>
	Signed <u>KM</u>
Sheet No. <u>2</u> of <u>7</u>	

**Location of Crusher, Shredder and Screens**



	NSW GOVERNMENT Planning
Issued under the Environmental Planning and Assessment Act 1979	
Approved Application No. <u>7698</u>	
granted on the <u>13/3/18</u>	
Signed <u>KM</u>	
Sheet No. <u>3</u> of <u>7</u>	

**Sensitive Receiver Locations**



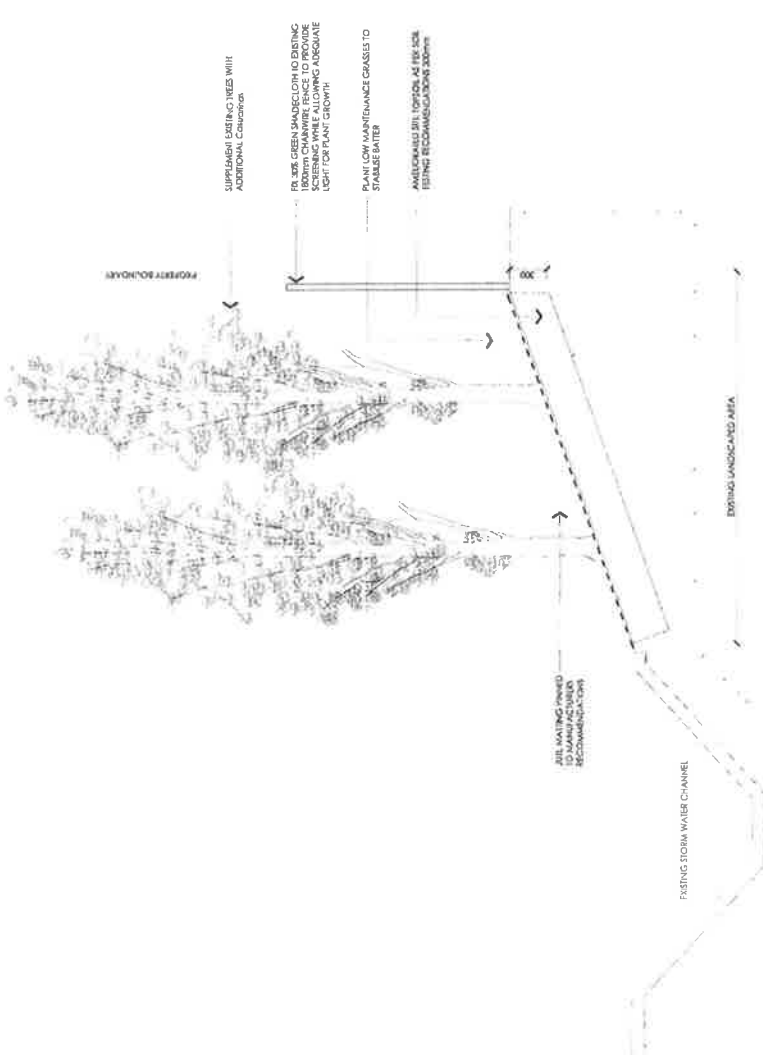
Sheet No. **4** of **7**  
 Signed: **S.M.**

**Landscape Plan**

[http://mapcollections.planning.nsw.gov.au/index.cfm?action=view\\_job&job\\_id=7698](http://mapcollections.planning.nsw.gov.au/index.cfm?action=view_job&job_id=7698)







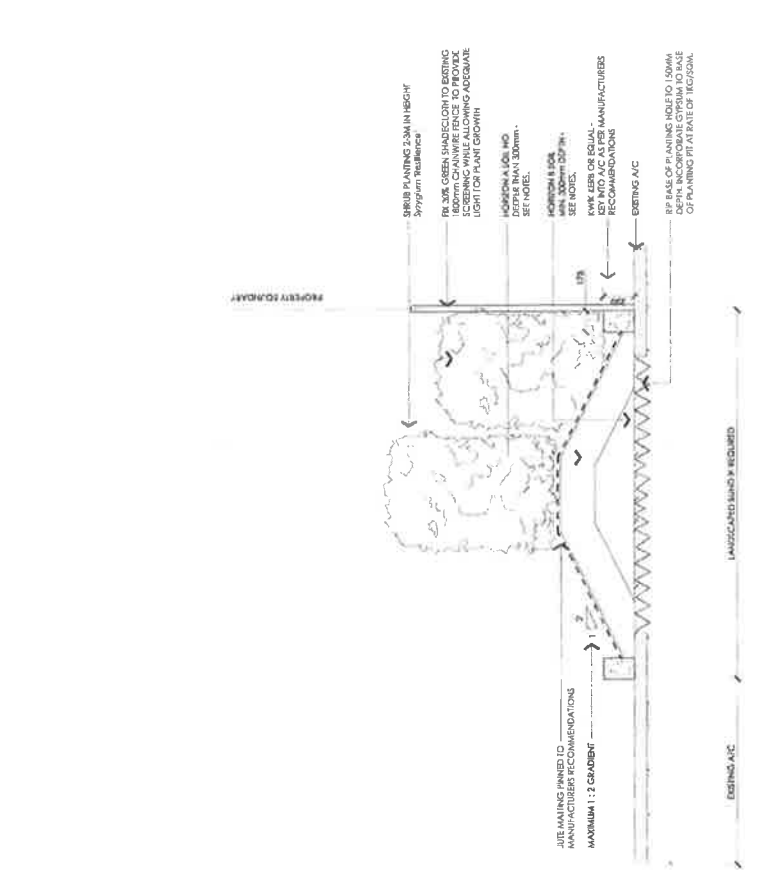
01 NORTHERN BOUNDARY PLANTING  
SECTION 4/4  
Scale: 1:20

### PLANT SCHEDULE

PLANT SCHEDULE TO BE USED WITH LANDSCAPE PLANTING PLAN & TO BE A REPRESENTATION OF THE QUALITY

NO.	SYMBOLICAL NAME	COMMON NAME	HEIGHT	PO	SIZE	SPACING
A	TREES	None	15-20m	45	2m x 2m	
Cg	Grass	Chlorophytum comarostriatum	15cm	45	2m x 2m	
B	Supplementary Planting	None	2-3m	75	1m x 1m	
Cc	Grass	Chlorophytum comarostriatum	15cm	45	2m x 2m	
Pc	Perennial	Chlorophytum comarostriatum	15cm	45	2m x 2m	

Supplementary Planting: 2-3m, 75, 1m x 1m. 0.8m, 2.5 litre, 6m<sup>2</sup>. 0.5m, 2.5 litre, 6m<sup>2</sup>. 0.8m, 2.5 litre, 4m<sup>2</sup>.



02 EASTERN BOUNDARY PLANTING  
SECTION 5/5  
Scale: 1:20

**NSW GOVERNMENT**  
Planning

Issued under the Environmental Planning and Assessment Act 1979

Approved Application No. **7698**

granted on the **13/3/18**

Signed **R.M.**

Sheet No. **6 of 7**

DATE OF ISSUE: 09/06/15  
DRAWING NO.: 1200/A1  
SHEET NO.: 2/3  
DATE: 09/06/15  
PROJECT: 10944.5  
DRAWING: L02  
SCALE: D



PROJECT: MATFIELD WEST RECYCLING FACILITY  
SITE: 80 TOURLE STREET MATFIELD WEST  
DRAWING: LANDSCAPE DETAILS  
CLIENT: BENEDICT  
DATE: 09/06/15

DATE	BY	VERIFIED	REV NO.	DATE	COMMENTS
09/06/15	CF	CF	1		
13/03/18	CF	CF	2		
13/03/18	CF	CF	3		
13/03/18	CF	CF	4		
13/03/18	CF	CF	5		

