

# ACCEPTED WASTE STREAMS

PO Box 10 Moorebank NSW 1875 T:02 8761 0000 recycling@benedict.com.au

**BENEDICT**  
**BENEDICT**  
**RECYCLING**

[www.benedictrecycling.com.au](http://www.benedictrecycling.com.au)

Waste Accepted	Product Code	Belrose	Chipping Norton	Newcastle	Wollongong
<b>Mixed Building &amp; Demolition Waste</b>	<b>DEMO</b>	✓	✓	✓	✓
<b>General Solid Waste Recyclable</b> Building & Demolition Waste from Infrastructure Projects May contain man-made rubbish such as plastic, paper, cloth, metal, brick, concrete, asphalt. Tipping subject to test reports being supplied and approved.	<b>GSREC</b>	✓	✓	✓	✓
<b>Rubble - Soil / Clay Based</b> Building & Demolition Waste consisting of a mixture of soil / clay, brick, concrete, asphalt. Must not contain any other material incl. light rubbish.	<b>RUBBL</b>	✓	✓	✓	✓
<b>Rubble - Sand Based</b> Building & Demolition Waste consisting of a mixture of sand, brick, concrete, asphalt. Must not contain any other material incl. light rubbish.	<b>RUBBLS</b>	✓	✓	x	✓
<b>Clean Segregated Concrete</b> Clean Straight Concrete - Building & Demolition Waste - must not contain any other material. Less than 700mm x 700mm in size.	<b>CONCC</b>	✓	✓	✓	✓
<b>Clean Segregated Concrete - Large</b> Clean Straight Concrete - Building & Demolition Waste - must not contain any other material. Greater than 700mm x 700mm in size.	<b>CONCCL</b>	✓	✓	✓	✓
<b>Mixed Brick &amp; Concrete</b> Building & Demolition Waste - must not contain any other material.	<b>CONBK</b>	✓	✓	✓	✓
<b>Clean Segregated Brick</b> Clean Straight Brick - must not contain any other material.	<b>BRICC</b>	✓	✓	✓	✓
<b>Asphalt</b> Building & Demolition Waste - must not contain any other material.	<b>ASPHA</b>	✓	✓	✓	✓
<b>VENM (Certified)</b> Certified only - Virgin Excavated Natural Material Soil, clay, shale, sandstone, sand - must not contain any other material.	<b>VENM</b>	✓	✓	✓	✓
<b>VENM (Certified) - Sand Only</b> Certified only - Virgin Excavated Natural Material. SAND ONLY - must not contain any other material including shale, clay or soil.	<b>VENMS</b>	✓	✓	✓	✓
<b>ENM</b> Excavated Natural Material - Must contain 98% (by weight) natural occurring materials. Tipping subject to test reports being supplied and approved.	<b>ENM</b>	x	x	✓	✓
<b>ENM - Sand only</b> Excavated Natural Material. SAND ONLY - Must contain 98% (by weight) natural occurring materials. Tipping subject to test reports being supplied and approved.	<b>ENMS</b>	x	x	✓	x
<b>Timber</b> Must not contain any other material including treated or engineered timber or stumps.	<b>TIMBE</b>	x	✓	✓	✓
<b>Vegetation</b> Full Loads – Garden/Green Waste Only – No Stumps.	<b>VEGET</b>	x	x	✓	✓
<b>Gyprock</b> Clean Gyprock - must not contain any other material.	<b>GYPROCK</b>	✓	✓	✓	✓
<b>Non-recyclable Waste</b> Carpet, carpet underlay, astro turf, treated timber, kopper logs, particle board/ MDF/form plywood, insulation, glass, polystyrene, horsehair plaster, heavy clay with rubbish and historical steel works blast furnace slag skulls & pig iron.	<b>NRECW</b>	✓	✓	✓	✓
<b>Non-recyclable Waste - Light</b> Polystyrene, plastics, insulation, foam packaging. Loads that contain 50% or more by volume of one or a mixture of any of the listed wastes.	<b>NRECWL</b>	✓	✓	✓	✓

**IMPORTANT! WE DO NOT ACCEPT: ASBESTOS, LIQUID WASTE, RADIOACTIVE WASTE, FOOD WASTE, FLAMMABLE MATERIAL, MEDICAL WASTE, HAZARDOUS MATERIALS, GAS BOTTLES, BATTERIES**

# ACCEPTED WASTE STREAMS

PO Box 10 Moorebank NSW 1875 T: 02 8761 0000 recycling@benedict.com.au



[www.benedictrecycling.com.au](http://www.benedictrecycling.com.au)

Waste Accepted	Product Code	Belrose	Chipping Norton	Newcastle	Wollongong
<b>Car Tyres</b>	<b>TYREC</b>				
<b>Truck Tyres</b>	<b>TYRET</b>				
<b>Stumps (exceeding 500mm diameter)</b>	<b>STUMP</b>				
<b>Mattresses</b>	<b>MATTR</b>				

Call us to find your nearest available site.

## WASTE ACCEPTED



### CLEAN SEGREGATED CONCRETE CONCC

Contains no other waste streams (including fines) but may contain a small amount of reinforcing steel or steel mesh. The concrete pieces should be no larger than 700mm x 700mm. If the concrete pieces exceed this size, then they are classified as CONCL – concrete large.



### CLEAN SEGREGATED CONCRETE BRICC

Brick classified loads can contain clay, terracotta or concrete brick and roof tiles with minimal fines. Brick classified loads should not contain soil, clay, timber, paper, plastic, vegetation or other manmade refuse.



### MIXED BRICK & CONCRETE CONBK

The classification will contain mostly concrete and brick however can also contain some tile, asphalt and other hard durable materials (less than 700mm in size). CONBK can contain some fines however, it should not contain soil, clay, timber, paper, plastic, vegetation or other manmade refuse in the loads.



### ASPHALT ASPHA

This usually comes to us in the form of reclaimed roads, pavements or parking lot surfaces. In some cases Asphalt may contain a small amount of concrete however, it should not contain other manmade materials.



### VIRGIN EXCAVATED NATURAL MATERIAL VENMS SAND

This waste stream is basically clean sand that contains no manmade contaminants. It may contain a very, very small amount of sandstone rock.



### VIRGIN EXCAVATED NATURAL MATERIAL VENM

VENM can be classified as soil, shale, sandstone or rock. VENM material must not contain any manmade materials whatsoever.

**IMPORTANT! WE DO NOT ACCEPT: ASBESTOS, LIQUID WASTE, RADIOACTIVE WASTE, FOOD WASTE, FLAMMABLE MATERIAL, MEDICAL WASTE, HAZARDOUS MATERIALS, GAS BOTTLES, BATTERIES**

# ACCEPTED WASTE STREAMS

PO Box 10 Moorebank NSW 1875 T: 02 8761 0000 recycling@benedict.com.au

**BENEDICT**  
**BENEDICT**  
RECYCLING

[www.benedictrecycling.com.au](http://www.benedictrecycling.com.au)

## WASTE ACCEPTED



### TIMBER TIMBE

This waste product can be made of any type of timber that has not been laminated or treated with chemical (such as koppers logs). Untreated timber from infrastructure (ie. flooring, pallets) is acceptable as timber waste but cannot contain stumps.



### RUBBLE SAND BASED RUBBLS

Building & Demolition Waste consisting of a mixture of sand, brick, concrete, asphalt. Must not contain any other material including light rubbish



### RUBBLE RUBBL

Loads that mostly contain brick, tile, concrete, asphalt and natural rock. This stream will have some fines either natural or recycled, but must not contain non-recyclable waste such as timber, plastic, paper, vegetation or other manmade refuse in the loads.



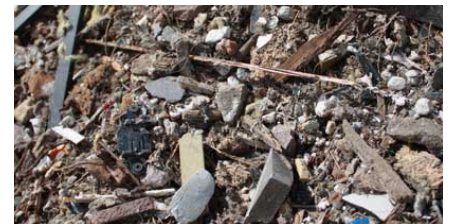
### VEGETATION - GREEN WASTE VEGE

This should be garden green waste only and this waste should not contain any manmade material or tree stumps.



### MIXED LIGHT DEMOLITION WASTE

This waste has a lighter density and is quite aerated. In many cases there will be no soil and few recoverables. The waste will consist of manmade products such as plastics, timer, glass, metal, cloth, etc. Much of this waste will go to landfill.



### MIXED HEAVY DEMOLITION WASTE

This waste stream usually has a heavy density to the product. This product will not be aerated and recoverables when screened can be soils, aggregates for crushing, steel and timber.



### NON-RECYCLABLE WASTE NRECW

Carpet, carpet underlay, astro turf, treated timber, kopper logs, particle board/MDF/form plywood, insulation, glass, polystyrene, horsehair plaster, heavy clay with rubbish and historical steel works blast furnace slag skulls & pig iron.



### NON-RECYCLABLE WASTE - LIGHT NRECWL

Polystyrene, plastics, insulation, foam packaging. Loads that contain 50% or more by volume of one or a mixture of any of the listed wastes.

**IMPORTANT! WE DO NOT ACCEPT: ASBESTOS, LIQUID WASTE, RADIOACTIVE WASTE, FOOD WASTE, FLAMMABLE MATERIAL, MEDICAL WASTE, HAZARDOUS MATERIALS, GAS BOTTLES, BATTERIES**