

3 June 2022

Department of Planning and Environment

Cover Letter

Mayfield West Recycling Facility (SSD – 7698)

2021 Annual Review – Request for Additional Information

As per the letter dated 31/05/2022 requesting additional information for the 2021 Annual Review please see the revised document below addressing the following:

1. Crushing and 24-hour waste receival – please include evidence of number of days crushing and the 24-hour waste receival operations, in accordance with Condition C9(d) of the consent.

Please see Section 3 – Crushing & 24-hour Waste Receival on page 3.

2. Complaints – please include a summary of the number of community complaints received during the reporting period compared to previous years and any trends in regard to the subject, timing or location of complaints.

Please see Section 7 – Complaints.

3. Pollution Monitoring – please include a discussion on any trends in noise, air and water quality monitoring data.

Please see Section 9 – Trends in Monitoring Data.

4. Independent Environmental Audit – please include a table that provides progress made in implementing the action plan from the most recent (2019) independent environmental audit required by Condition C13 of the consent.

Please see section 4.1 – Independent Environmental Audit.

5. Appendix A Conditions Compliance Report –

a. please include an additional column to note the compliance status (compliant/not compliant/not triggered) of each consent condition.

Please see the Appendix A Compliance table.

b. please provide the maximum amount of waste stored on site at any one time during the 2021 reporting period (Condition A8).

Please see A8 on page 35.

ANNUAL REVIEW (Condition C9)



Mayfield West Recycling Facility (SSD 7698)

01 January 2021 - 31 December 2021

Contents

1 Introduction	4
1.1 Overview	4
2 Development.....	6
3 Crushing & 24-hour Waste Receival.....	6
4 Previous report actions	7
4.1 Independent Environmental Audit	7
5 Compliance status summary	25
6 Incidents.....	25
6.1 Non-Compliance.....	25
7 Complaints	25
8 Pollution Monitoring.....	27
9 Trends in monitoring data.....	31
10 Discrepancies in the development.....	31
11 Improving environmental performance.....	31
Appendixes.....	33
Appendix A – Conditions Compliance Report	33

1 Introduction

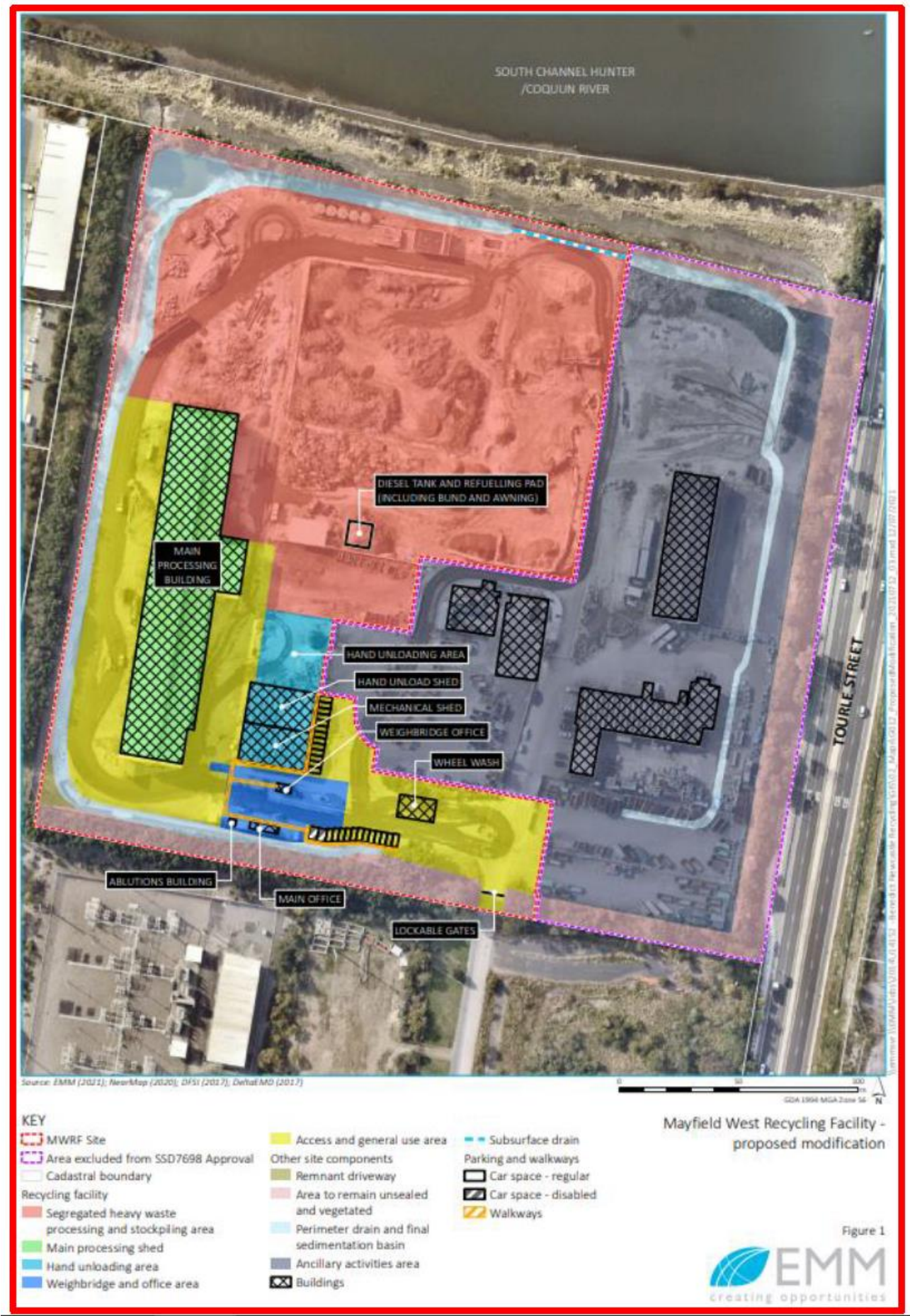
1.1 Overview

Benedict Recycling Pty Ltd (Benedict) is the operator of the Mayfield West Recycling Facility (SSD 7698) located at 1A McIntosh Drive, Mayfield West.

Condition C9 of the SSD approval requires the preparation of an annual review of the environmental performance of the Development.

This annual review is for the period 01 January 2021 – 31 December 2021.





2 Development

Describe the development that was carried out in the previous calendar year, and the development that is proposed to be carried out over the next year

Benedict was granted development consent for the Mayfield West Recycling Facility by the Department of Planning, Industry and Environment (DPIE) on 13 March 2018 allowing increased processing capacity from 90 000 tonnes per year to 315 000 tonnes per year of general solid waste (non-putrescible). The operations commenced on 25 September 2018.

During 2021 the development continued operating a recycling facility providing a range of services to the demolition and construction industries. As such processing up to 315 000 tonnes per year of general solid waste (non-putrescible). As per the consent and Environmental Protection Licence (EPL) 20771 for the site the acceptable waste to be received includes both co-mingled and segregated building and demolition waste as well as selected commercial and industrial waste. Benedict will continue providing a range of services to the demolition and construction industries in 2022.

On 27 October 2021 a Modification to the Consent was determined (SSD-7698-MOD-1) see [here](#). This included amending the site boundary and site layout of the site. The modification involved adding additional areas to the already approved area and to relocate the already approved 'public hand unloading area' from the heavy waste processing area to an existing shed.

The use of the existing shed as the new location for public hand unloading is in a less traffic-ed part of the site for members of the public in light vehicles to access recycling services for waste materials away from the larger, heavy vehicles and site machinery. As such, the sole purpose of using the shed is to afford the public with easier access to a covered, all-weather area and to protect the public from safety risks potentially created by recycling machinery and heavy vehicles.

3 Crushing & 24-hour Waste Receival

Detail and provide evidence for the number of days crushing and the 24-hour waste receival operations has occurred

Between 01 January 2021 – 31 December 2021 no crushing has occurred on site.

There had been two 24-hour waste receival operations during this period:

1. 31 May – 3 June 2021 and 6 June – 8 June 2021 (7 nights in total)
2. 8 November – 9 November 2021 and 14 November – 15 November 2021 and 16 November – 17 November 2021 and 21 November – 22 November 2021 (8 nights in total)

As per Condition B65 the Secretary, Council and adjacent landowners were notified.

4 Previous report actions

There were no reports completed during 2021 or previous reports that had outstanding non-compliances to be rectified.

4.1 Independent Environmental Audit

Please see the table below that provides a progress update on implementing the action plan from the most recent 2019 independent environmental audit required by Condition C13.

Condition number	Condition	Auditor recommendation	Benedict's response with target dates for implementation of proposed actions	Status Update for proposed actions
A27	The Applicant must ensure that all its employees, contractors (and their sub-contractors) are made aware of, and are instructed to comply with, the conditions of this consent relevant to activities they carry out in respect of the Development	<p>1. Update the environmental awareness training materials to include reference to the requirement to comply with the Project Approval. The training materials should identify key compliance obligations as they apply to workers and contractors.</p> <p>2. Update the driver induction form to include the transport related Project Approval obligations, including, for example the requirement that heavy vehicles to not access Werribi Street</p>	<p>1. The existing Environmental awareness training materials will be updated to include the reference to the requirement to comply with the Project Approval (30/06/2020)</p> <p>2. The current Driver Induction form will be updated to include 'heavy vehicles to not access Werribi Street' (31/01/2020)</p>	<p>1. Completed</p> <p>2. Completed</p>
B12	From the commencement of operations, the Applicant must implement a Waste Monitoring Program for the development. The program must ensure that: (i) all waste that is controlled under	<p>1. Revise Section 5 of Appendix D of the OEMP to include process for ensuring that wastes controlled under a waste tracking system has appropriate documentation prior to acceptance on site.</p> <p>2. Revise Section 5 of Appendix D of the OEMP to include details of waste</p>	<p>1. We believe Section 5 of Appendix D in the OEMP does satisfy this condition, particularly as DPIE were satisfied that the WMP met this condition before approving the OEMP.</p> <p>2. Section 4 of the WMP covers training outlined in this condition. This consent condition doesn't specify that the WMP needs to document the recording of this training.</p>	<p>1. Completed</p> <p>2. Completed</p>

Condition number	Condition	Auditor recommendation	Benedict's response with target dates for implementation of proposed actions	Status Update for proposed actions
	a tracking system has the appropriate documentation prior to acceptance at the site. (ii) staff receive adequate training to be able to recognise and handle any hazardous or other prohibited waste including asbestos	receipt and management training, including scope and frequency of training in the Waste Monitoring Program.		
B15	The Applicant must: (a) implement suitable measures to manage pests, vermin and declared noxious weeds on the site; and (b) inspect the site on a regular basis to ensure that these measures are working effectively, and	1. Develop a weekly environmental compliance checklist for completion by site management that includes pest and weed inspections (Note that details of potential weed species and photographs would assist management in determining if weed eradication is required). 2. Ensure that the weekly environmental inspection records are kept	1. A weekly compliance checklist has since been implemented. Weeds are eradicated from the site; however, this has not been documented as the auditor would like (31/01/2020) 2. The weekly compliance checklist records will be kept (31/01/2020)	1. Completed – weekly compliance checklist implemented onsite 2. Completed

Condition number	Condition	Auditor recommendation	Benedict's response with target dates for implementation of proposed actions	Status Update for proposed actions
	that pests, vermin or noxious weeds are not present on site in sufficient numbers to pose an environmental hazard, or cause the loss of amenity in the surrounding area. Note: For the purposes of this condition, noxious weeds are those species subject to an order declared under the Noxious Weed Act 1993			

Condition number	Condition	Auditor recommendation	Benedict's response with target dates for implementation of proposed actions	Status Update for proposed actions
B24	All excess water from the truck wash and wheel wash is to be discharged into suitable holding tanks and removed from the facility for treatment at an appropriately licensed facility or via trade waste	<ol style="list-style-type: none">1. Design and install a system to allow the collection and temporary storage of temporary wastewater from the wheel wash.2. Ensure that wheel wash wastewaters are disposed of, off-site at an appropriately licenced facility	<ol style="list-style-type: none">1. The wheel wash is not a net consumer of water. It needs to be continually topped up as water evaporates from the wheel wash throughout the day. If we were ever needing to empty excess water out we can use the onsite water cart to pump water out	<ol style="list-style-type: none">1. Completed

Condition number	Condition	Auditor recommendation	Benedict's response with target dates for implementation of proposed actions	Status Update for proposed actions
B25	Prior to the commencement of operations, the Applicant must design, install and operate a surface water management system for the Development. The system must: (e) ensure vegetation within the sediment basin and perimeter drain has been removed and the surface water infrastructure has been sealed to prevent surface water infiltration to groundwater	1. Undertake a detailed survey of the perimeter drain, identify all areas where vegetation has damaged the drain, or the drain has been otherwise compromised. Remove all of the vegetation and reseal the drain	1. Any vegetation in the surface of the drain at or below the level of the site weir will be removed and repaired. Any surfaces above the weir are not relevant (30/04/2020)	1. Completed
B28	The surface water management system must be operated and maintained for the duration of the Development	1. Undertake a detailed survey of the perimeter drain, identify all areas where vegetation has damaged the drain or the drain has been otherwise compromised. Remove all	1. See B25 comment (30/04/2020) 2. A weekly compliance checklist has since been implemented. The surface water treatment system (sumps and pumps) are checked however, this has not been documented as the auditor would like (31/01/2020)	1. Completed 2. Completed – weekly compliance checklist implemented onsite

Condition number	Condition	Auditor recommendation	Benedict's response with target dates for implementation of proposed actions	Status Update for proposed actions
		<p>of the vegetation and reseal the drain.</p> <p>2. Initiate a monthly environmental site inspection that covers all compliance issues under the Approval, including the surface water management system.</p> <p>Note that this should include the water treatment system (sumps and pumps)</p>		
B29	The Applicant must maintain the surface water management system to minimise the infiltration of surface water to groundwater. This includes inspecting the infrastructure monthly for cracking and vegetation break through, removing the vegetation and	<p>1. Undertake a detailed survey of the perimeter drain, identify all areas where vegetation has damaged the drain, or the drain has been otherwise compromised. Remove all of the vegetation and reseal the drain.</p> <p>2. Initiate a monthly environmental site inspection that covers all compliance issues under the Approval, including the surface water management system.</p>	<p>1. See B25 comment (30/04/2020)</p> <p>2. A weekly compliance checklist has since been implemented. The surface water management system is checked however, has not been documented as the auditor would like (31/01/2020)</p>	<p>1. Completed</p> <p>2. Completed – weekly compliance checklist implemented onsite</p>

Condition number	Condition	Auditor recommendation	Benedict's response with target dates for implementation of proposed actions	Status Update for proposed actions
	sealing the infrastructure. Any maintenance on the surface water management system must be undertaken by a suitably qualified and experienced person(s), a record of these works must be kept for the life of the Development			
B34	Prior to the commencement of operations, the Applicant must prepare a Surface Water Characterisation and Mitigation Plan (SWCMP). The SWCMP must: (b) implement the most recent version of the SWCMP approved by the Secretary	1. Prepare and implement a monthly environmental compliance inspection checklist that provides a framework for on-going review of environmental compliance requirements	1. An environmental compliance inspection checklist has since been implemented as mentioned above (31/01/2020)	1. Completed – weekly compliance checklist implemented onsite

Condition number	Condition	Auditor recommendation	Benedict's response with target dates for implementation of proposed actions	Status Update for proposed actions
	for the duration of the development			
B35	Within six months of the commencement of operations and following the management measures being implemented as per SWCMP (Condition B33), the applicant must provide a Surface Water Validation Report (SWVR) to the satisfaction of the secretary	Ensure all studies and reports required by DPIE are submitted within the requested timeframes	All studies and reports required by DPIE will be submitted within requested timeframes.	Completed and ongoing
B42	As a minimum, the Applicant must ensure the 40,000 litre self-bunded diesel tank is managed as follows: (b) the tank must be installed in accordance with the relevant	<ol style="list-style-type: none"> 1. Install bollards (that meet the requirements of AS3845) to permanently separate heavy vehicles from the fuel tank installation 2. Prepare and implement a weekly environmental compliance inspection checklist covering the fuel storage area. 	<ol style="list-style-type: none"> 1. Bollards will be installed (31/03/2020) 2. A weekly compliance checklist has since been implemented covering the fuel storage area. The fuel area is checked however has not been documented as the auditor would like (31/01/2020) 3. The refuelling area is bunded. All staff will be reminded via a toolbox talk to always refuel within this bunded area (31/03/2020) 4. The spill kit has since been replenished (31/01/2020) 5. A weekly compliance checklist has since been implemented covering the spill kit. The spill kit is 	<ol style="list-style-type: none"> 1. Completed – installed onsite 2. Completed – weekly compliance checklist implemented onsite 3. Completed – toolbox talk given 4. Completed 5. Completed – weekly compliance checklist implemented onsite

Condition number	Condition	Auditor recommendation	Benedict's response with target dates for implementation of proposed actions	Status Update for proposed actions
	Australian Standards, must be above ground and be protected against impact from heavy vehicles (e) hoses used for transfer of diesel must be inspected weekly (h) the diesel tank and re-fuelling area must be bunded within an area of impervious hardstand; and (i) a diesel spill kit must be stored in the refuelling area and deployed in the event of a spill.	3. Install a bund (or catch drain) around the refuelling pad to ensure that any spills occurring during refuelling can be fully contained. 4. Replenish the spill kit at the Diesel storage area. 5. Prepare and implement a weekly environmental compliance inspection checklist that covers spill kit inspection.	checked on occasion, however, has not been documented as the auditor would like (31/01/2020)	
B43	To ensure that chemical spills and firewater are contained on-site, prior to the commencement of operations and	1. Contact FRNSW and seek approval for containment of fire water. 2. Prepare and implement a weekly environmental compliance inspection checklist that includes	1. There was no consultation with FRNSW during the preparation of the plan rather FRNSW comments were taken on board during the RTS phase of the assessment phase 2. A weekly compliance checklist has since been implemented covering the sediment pond outlet valve.	1. Completed 2. Completed – weekly compliance checklist implemented onsite

Condition number	Condition	Auditor recommendation	Benedict's response with target dates for implementation of proposed actions	Status Update for proposed actions
	to the satisfaction of FRNSW, the Applicant must ensure (a) a stormwater isolation valve is installed; the stormwater isolation valve must be closed at all times unless stormwater is being discharged and its closure must be monitored weekly	weekly checks on the sediment pond outlet valve	The valve is checked however, has not been documented as the auditor would like (31/01/2020)	
B44	The Applicant must implement all reasonable and feasible measures to minimise the impact on the site's access road and any impacts on 1 McIntosh Drive, Mayfield West (Lot 16 in DP 270249).	1. Update the Driver induction materials to fully cover the requirements for minimising impacts on the site access road or 1 Macintosh Drive	1. Driver induction form will be updated detailing further to minimise impacts on the site access road (31/01/2020)	1. Completed – driver induction form has been updated
B46	All customers are not permitted to leave their	1. Include the key traffic safety requirements that relate to members of the	1. Further detail of the key traffic requirements can be added to the driver induction form. The driver induction form is for everyone entering the site, heavy	1. Completed – driver induction form has been updated

Condition number	Condition	Auditor recommendation	Benedict's response with target dates for implementation of proposed actions	Status Update for proposed actions
	vehicles anywhere on the site other than the public unloading area and to access the pedestrian walkways between marked car parking spaces and the weighbridge and office area.	public using the site in an appropriate information pamphlet / induction form for members of the public using the facility. The existing Driver Induction and Visitor Induction are not the appropriate documents as they are not applicable to members of the general public. 2. Update the site entrance signage to inform members of the public that they are not permitted to exit their vehicles, except to unload in the public, hand unloading area.	vehicle drivers and members of the general public. The site is also signed, and operational staff are on the ground to direct drivers as required (31/01/2020) 2. Site entrance/induction form will be updated with this detail (31/01/2020)	2. Completed
B49	The Applicant must ensure that: (d) the Development does not result in any vehicles queuing on the public road network or along the sites access road owned known as 1	1. Investigate the reasons for queuing and options to prevent queuing of trucks on the site access road.	1. The site doesn't cause queuing; however, drivers will pull over from time to time to finish phone calls, do paperwork or eat their lunch. This temporary parking is not caused by lack of queuing distance at the weighbridge	1. Complete

Condition number	Condition	Auditor recommendation	Benedict's response with target dates for implementation of proposed actions	Status Update for proposed actions
	McIntosh Drive, Mayfield West (Lot 16 in DP 270249) which is subject to a right of carriageway.			
B51	The Applicant must (b) implement the most recent version of the OTPMP approved by the Secretary for the duration of the development	<ol style="list-style-type: none"> 1. Refer to Condition B49 (d) 2. Provide all heavy vehicle operators using the site with a copy of the Drivers Code of Conduct as part of the Site Induction process 	<ol style="list-style-type: none"> 1. See B49, above 2. All new operators to the site are provided with a copy of the Drivers Code of Conduct 	<ol style="list-style-type: none"> 1. Complete 2. Complete
B54	All reasonable steps must be taken to minimise dust generated during all works authorised by this consent	1. Review dust management actions including stockpile water sprays and sweeping of internal roads	1. Stockpiles are wetted down with the water cart daily and in adverse weather conditions. Internal roads are swept with a street sweeper to reduce soil and mud. The number of times the street sweeper visits is adjusted as necessary to suit the conditions on site.	1. Complete
B55	The Applicant must ensure that: (h) all operations and activities occurring at the Development must be carried out in a manner	1. Review dust management actions including stockpile water sprays and sweeping of internal roads.	1. See B54	1. Complete

Condition number	Condition	Auditor recommendation	Benedict's response with target dates for implementation of proposed actions	Status Update for proposed actions
	that minimises the emissions of air pollutants from the Development			
B58	The Applicant must: (a) not commence the operations until the AQMP required by Condition B57 is approved by the Secretary: and (b) implement the most recent version of the AQMP approved by the Secretary for the duration of the development	1. Ensure that all air quality mitigation measures contained in the AQMP are implemented	1. All air quality mitigation measures contained within the AQMP will be reviewed and continue to be implemented in site operations (ongoing)	1. Complete and ongoing
B69	The Applicant must: (b) minimise the noise impacts of the Development during adverse meteorological conditions	1. Develop an appropriate definition of "adverse metrological conditions". This should include wind speed and direction criteria. 2. Identify the actions to be taken to minimise noise impacts on the identified	1. A definition will be developed and added into the OEMP (30/04/2020) 2. Section 4.8 of the OEMP will be reviewed, however DPIE has already reviewed this content and approved it 3. A checklist will be implemented (31/01/2020) 4. Further training will be provided to site management and supervisors (30/06/2020)	1. Completed 2. Ongoing 3. Completed – weekly compliance checklist implemented onsite 4. Ongoing

Condition number	Condition	Auditor recommendation	Benedict's response with target dates for implementation of proposed actions	Status Update for proposed actions
	(d) regularly assess noise emissions and relocate, modify and/or stop operations to ensure compliance with the relevant conditions of this consent	sensitive receivers and update the Section 4.8 of the OEMP 3. Prepare a daily "environmental inspection checklist" for site management to complete. Include noise generation and noisy work locations. 4. Provide training to site management / supervisors in assessing (by observation) noisy activities that may result in excessive noise emissions and noise mitigation strategies		
B72	Prior to the commencement of operations, the final design of the development must be finalised (and include): (c) the arrangement of stockpiles of combustible material, stored externally, on the allotment be sufficiently	1. Ensure that all potentially combustible stockpiles are adequately separated to prevent the spread of fire and to allow clear access to FRNSW vehicles directly to the Stockpile	1. Stockpiles of flammable material will be separated, and this will be included as a check in the environmental compliance checklist (31/01/2020)	1. Ongoing and completed – weekly compliance checklist implemented onsite

Condition number	Condition	Auditor recommendation	Benedict's response with target dates for implementation of proposed actions	Status Update for proposed actions
	separated to permit FRNSW vehicle access between stockpiles;			
B83	The Applicant must consult with the community regularly throughout the Development, including consultation with the nearby, adjacent landowners, sensitive receivers, relevant regulatory authorities, Registered Aboriginal Parties and other interested stakeholders	1. Seek clarification the intent of Condition B83 from DPIE as the triggers for consultation	1. Neighbours were consulted regarding the increased tonnage as part of the project approval process. Benedict webpage has phone numbers listed for central points of contact from the community. Also the sign at the front of site has contact numbers listed. Consultation will be made with neighbours should a 24-hour waste receipt occur. This waste receipt period so far has not occurred.	1. Ongoing
C5	The Applicant must carry out the construction of the Development in	1. Refer to the non-compliance recommendations above	1. Refer to responses as above	1. Ongoing

Condition number	Condition	Auditor recommendation	Benedict's response with target dates for implementation of proposed actions	Status Update for proposed actions
	accordance with the OEMP approved by the Secretary (and as revised and approved by the Secretary from time to time), unless otherwise agreed by the Secretary			
C11	Within seven days of the date of this incident, the Proponent must provide the Secretary and any relevant agencies with a detailed report on the incident	1. Ensure that all environmental and compliance related incidents are reported to DPIE	1. All incidents will be reported to DPIE (ongoing)	1. Ongoing
C15	The Applicant must: (a) make copies of the following publicly available on its website: (i) the documents referred to in Condition A2;	1. Upload a copy of the EIS to the Benedict Website 2. Upload a copy of the LMP to the Benedict Website	1. EIS has been uploaded to the website (31/01/2020) 2. LMP has been uploaded to the website https://www.benedict.com.au/about/policies-compliance/	1. Completed 2. Completed

Condition number	Condition	Auditor recommendation	Benedict's response with target dates for implementation of proposed actions	Status Update for proposed actions
	(iii) all approved strategies, plans and programs required under the conditions of this consent;			

5 Compliance status summary

(b) Provide a conditions compliance report which tracks the compliance of the development with the conditions of this approval

This can be found below in Appendix A.

6 Incidents

6.1 Non-Compliance

Identify any non-compliance over the last year and describe what actions were (or are being) taken to ensure compliance

Between 01 January 2021 – 31 December 2021 there no non-compliances identified.

7 Complaints

Between 01 January 2021 – 31 December 2021 the site received four (4) complaints through the EPA environmental complaints line:

1. In February, a member of the community who parks their car on Laurio Place had found their car covered in particulate matter.

All dust suppression was checked and was working effectively. A report was provided to the EPA as requested.

2. In May, a member of the community, a neighbour from Laurio Pl, rang the site to talk to the Site Manager about dust issues.
3. In September, a member of the community rang the EPA environmental complaints line about dust.

A report was provided to the EPA as requested.

4. In December a complainant called the EPA Environmental complaints line regarding dust deposit on their car overnight.

A response was provided to the EPA – we do not operate overnight, therefore do not accept that we were the cause of the alleged dust deposition event.

A copy of the site complaints log can be found on the Benedict website ([here](#)).

Previous years:

Between 01 January 2020 – 31 December 2020 the site received one (1) dust complaint from a neighbour in Laurio Place.

Between 01 January 2019 – 31 December 2019 the site received one (1) dust complaint from a member of the community.

Between 01 January 2018 – 31 December 2018 the site received one (1) dust complaint from a neighbour in Laurio Place.

Trends:

From 2018 – 2021 the common trend is dust complaints from a neighbour in Laurio Place. The site has upgraded the screening on the main processing shed and upgraded the dust suppression sprinkler along the western perimeter of the site to further mitigate any further dust complaints.

8 Pollution Monitoring

(c) Include a comprehensive review of the monitoring results and complaints records of the development over the previous calendar year, which includes a comparison of these results against the:

- (i) the relevant statutory requirements, limits or performance measures/criteria**
- (ii) requirements of any plan or program required under this consent**
- (iii) the monitoring results of previous years**
- (iv) the relevant predictions in the EIS**

MONITORING RESULTS

- (i) The relevant statutory requirements and limit criteria for monitoring requirements are outlined in the SSD and EPL for water monitoring and noise monitoring described below.

Noise limits are presented in the table below.

Receiver	Day LAeq (15 minute)	Evening LAeq (15 minute)	Night LAeq (15 minute)	Night LAMax
R1 Kerr Street	48	40	40	51
R2 Woodstock Street North East	49	41	41	52
R3 Woodstock Street North West	47	39	39	51
R4 Simpson Court	47	39	39	50
R5 Shelley Close	50	42	42	53
R6 Groongal Street East	48	41	41	51
R7 Groongal Street	48	41	41	52
R8 Groongal Street	48	40	40	52
R9 Gregson Avenue	49	42	42	52
R10 Gregson Avenue	49	41	41	51

R11 80 Gregson Avenue	49	42	42	52
R12 Terry Street	42	41	41	48
R13 Olearia Crescent	40	36	36	47
Mayfield West Primary School	Internal 35 dB(A) – Noisiest 1 hr period (when in use)			
Church of Christ	Internal 40 dB(A) LAeq, period (when in use)			
Scout Hall	External 55 dB(A) Leq, period (when in use)			

Note: The noise limits above, apply in all meteorological conditions except the following:

- Wind speeds greater than 3 metres/second at 10 metres above ground level; or
- Stability category F temperature inversion conditions and wind speeds greater than 2 metres/second at 10 metres above ground level; or
- Stability category G temperature inversion conditions.

Water discharge limits are presented below.

Monitoring Description	Pollutant	Units of measure	100 percentile concentration limit
Final sediment basin in north-western corner of the site	Oil and grease	Milligrams per litre	10
	pH	pH	6.5-8.5
	Total suspended solids	Milligrams per litre	50

- (ii) As per the EPL operator attended noise monitoring is to be conducted quarterly at receiver points R5, R9 and R12.
As per the EPL water monitoring (a grab sample) is to occur daily during any discharge from the final sediment basin in the north-western corner of the site.
- (iii) All noise monitoring results conducted between 01 January 2021 – 31 December 2021 were under the limits outlined in the SSD and EPL. Results can be found [here](#). Water was discharged from site on the 20th – 23rd March 2021. Results can be found [here](#).

Water monitoring results:

Pollutant	Unit of Measure	100 Percentile Concentration Limit	Lowest sample value	Highest sample value	Mean of samples	Sample Date			Exceedance
						20/03/2021	21/03/2021	22/03/2021	
Oil and Grease	mg/L	10	2.50	2.50	2.50	2.50	2.50	2.50	N
pH	pH	6.5 - 8.5	7.43	8.02	7.64	7.46	7.43	8.02	N
Total Suspended Solids	mg/L	50	6	44	27	6	32	44	N
Turbidity	mg/L	No limits apply, monitoring purposes only	18	60	42	18	60	47	No limits apply, monitoring purposes only
Aluminium	mg/L		0.02	0.14	0.06	0.02	0.02	0.14	
Chromium	mg/L		0.001	0.002	0.002	0.001	0.002	0.002	
Copper	mg/L		0.008	0.033	0.021	0.023	0.033	0.008	
Lead	mg/L		0.001	0.007	0.003	0.0005	0.001	0.007	
Zinc	mg/L		0.014	0.042	0.029	0.014	0.031	0.042	
Ammonia	mg/L		0.07	0.14	0.11	0.14	0.07	0.12	
Nitrite	mg/L		0.02	0.02	0.02	0.02	0.02	<0.01	
Nitrate	mg/L		0.12	0.15	0.13	0.12	0.12	0.15	
Nitrite + Nitrate	mg/L		0.14	0.15	0.14	0.14	0.14	0.15	
Total Kjeldahl Nitrogen	mg/L		0.9	2.2	1.4	0.9	1.1	2.2	
Total Nitrogen	mg/L		1.0	2.4	1.5	1	1.2	2.4	
Total Phosphorus	mg/L		0.05	0.07	0.06	0.05	0.07	0.07	
Reactive Phosphorus	mg/L		0.01	0.02	0.02	0.02	0.02	0.01	

Quarterly noise monitoring results:

EIS predictions stated noise levels from the project were predicted to comply with EPA noise criteria. The EIS also predicted noise levels to be less than existing ambient noise levels which are primarily due to high road traffic noise. The EIS predicted noise levels would not cause any adverse impacts at the monitoring locations.

These predictions in the EIS were correct as all noise monitoring results conducted between 01 January 2021 – 31 December 2021 were under the limits outlined in the SSD and EPL. A summary table for the noise monitoring results against the consent limits can be found below.

Quarter 1:

Date	Monitoring Point ID	Period	Site Noise Level Construction		EPL Limits, dB	
			L _{Aeq}	L _{Amax}	L _{Aeq}	L _{Amax}
16/03/2021	R4	Day	I/A	N/A	47 (Day) / 39 (Night)	50 (Night)
		Night	I/A	I/A		
	R8	Day	I/A	N/A	48 (Day) / 40 (Night)	52 (Night)
		Night	I/A	I/A		
	R11	Day	I/A	N/A	48 (Day) / 42 (Night)	52 (Night)
		Night	I/A	I/A		

Quarter 2:

Date	Monitoring Point ID	Period	Site Noise Level Construction		EPL Limits, dB	
			L _{Aeq}	L _{Amax}	L _{Aeq}	L _{Amax}
19/05/2021	R4	Day	I/A	N/A	47 (Day) / 39 (Night)	50 (Night)
		Night	I/A	I/A		
	R8	Day	I/A	N/A	48 (Day) / 40 (Night)	52 (Night)
		Night	I/A	I/A		
	R11	Day	I/A	N/A	48 (Day) / 42 (Night)	52 (Night)
		Night	I/A	I/A		

Quarter 3:

Date	Monitoring Point ID	Period	Site Noise Level Construction		EPL Limits, dB	
			L _{Aeq}	L _{Amax}	L _{Aeq}	L _{Amax}
13/08/2021	R4	Day	I/A	N/A	47 (Day) / 39 (Night)	50 (Night)
		Night	I/A	I/A		
	R8	Day	I/A	N/A	48 (Day) / 40 (Night)	52 (Night)
		Night	I/A	I/A		
	R11	Day	I/A	N/A	48 (Day) / 42 (Night)	52 (Night)
		Night	I/A	I/A		

Quarter 4:

Date	Monitoring Point ID	Period	Site Noise Level Construction		EPL Limits, dB	
			L _{Aeq}	L _{Amax}	L _{Aeq}	L _{Amax}
15/12/2021	R4	Day	I/A	N/A	47 (Day) / 39 (Night)	50 (Night)
		Night	I/A	I/A		
	R8	Day	I/A	N/A	48 (Day) / 40 (Night)	52 (Night)
		Night	I/A	I/A		
	R11	Day	I/A	N/A	48 (Day) / 42 (Night)	52 (Night)
		Night	I/A	I/A		

- (iv) As both, noise monitoring and water discharges were under limits prescribed in SSD and EPL, all impacts are in line with the anticipated predictions in the EIS.
- (v) Air Quality Monitoring
As per SSD consent condition B59 no crushing events occurred at the site between 01 January 2021 – 31 December 2021 therefore no air quality monitoring was conducted.

9 Trends in monitoring data

Identify any trends in the monitoring data over the life of the development

The site has not exceeded limits outlined in the SSD and EPL for noise monitoring or water discharges.

10 Discrepancies in the development

Identify any discrepancies between the predicted and actual impacts of the development and analyse the potential cause of any significant discrepancies

No discrepancies have arisen between 01 January 2021 – 31 December 2021 from the predicted and actual impacts of the development with all impacts being in line with the anticipated impacts of the development.

11 Improving environmental performance

Describe what measures will be implemented over the next year to improve the environmental performance of the development

The site will continue its ongoing commitment to adhere to all management strategies and control measures as outlined in the Operational Environmental Management Plan, SSD and EPL.

As per condition B35 the Surface Water Validation Report has been submitted to DPIE and the EPA for comment. Any results found from this validation report will be updated within the site's Surface Water Characterisation Management Plan and adhered to on the site.

Appendixes

Appendix A – Conditions Compliance Report

(b) Provide a conditions compliance report which tracks the compliance of the development with the conditions of this approval

Condition	Requirement	Tracking	Compliant/Not Compliant/Not triggered
A1	In addition to meeting the specific performance measures and criteria in this consent, all reasonable and feasible measures must be implemented to prevent, and if prevention is not reasonable and feasible, minimise, any material harm to the environment that may result from the construction and operation of the development, and any rehabilitation required under this consent.	Management Measures documented in Chapter 6 of OEMP, version 5.	Compliant
A2	The Development may only be carried out: (a) in compliance with the conditions of this consent; (b) in accordance with the directions of the Secretary; (c) in accordance with the EIS, RTS and Amended Application; (d) in accordance with development layout plans and drawings in the RTS and Amended Application (see Appendix A); and (e) in accordance with the management and mitigation measures (see Appendix B).	Compliant OEMP addresses compliance of all conditions of consent.	Compliant

Condition	Requirement	Tracking	Compliant/Not Compliant/Not triggered
A3	Consistent with the requirements in this consent, the Secretary may make written directions to the Applicant in relation to: (a) the content of any strategy, study, system, plan, program, review, audit, notification, report or correspondence submitted under or otherwise made in relation to this consent, including those that are required to be, and have been, approved by the Secretary; and (b) the implementation of any actions or measures contained in any such document referred to in (a) above.	Noted	Not Triggered
A4	The conditions of this consent and directions of the Secretary prevail to the extent of any inconsistency, ambiguity or conflict between them and a document listed in condition A2(c), A2(d) and A2(e). In the event of an inconsistency, ambiguity or conflict between any of the documents listed in condition A2(c), A2(d) and A2(e) the most recent document prevails to the extent of the inconsistency, ambiguity or conflict. Note: For the purposes of this condition, there will be an inconsistency between documents if it is not possible to comply with both documents, or in the case of a condition of consent or direction of the Secretary, and a document, if it is not possible to comply with both the condition or direction, and the document.	Noted	Not Triggered

Condition	Requirement	Tracking	Compliant/Not Compliant/Not triggered
A5	This consent lapses five years after the date from which it operates, unless the Development has physically commenced on the land to which the consent applies before that date.	Noted. Construction activities commenced 20 April 2018	Not Triggered
A6	The Applicant must not receive or process on site more than 315,000 tonnes per year of general solid waste (non-putrescible).	During 01/01/2021 and 31/12/2021 185 711.13 tonnes of GSW was received/processed on site.	Compliant
A7	The Applicant must not: (a) crush more than 71,000 tonnes per year of waste; and (b) shred more than 5,400 tonnes per year of timber.	(a) No crushing occurred on site between 01/01/2021 and 31/12/2021 (b) No timber was shredded on site between 01/01/2021 – 31/12/2021	Compliant
A8	The amount of waste stored on site at any one time must not exceed 53,733 tonnes.	During 01/01/2021 and 31/12/2021 the maximum amount of waste stored on site at any one time was 24 542.76 tonnes.	Compliant
A9	This consent does not permit any areas of the site to be leased to third parties for storage purposes or approval of any portion of the site as a storage premises.	Noted	Compliant
A10	The Applicant shall aim to achieve a recycling rate of 95% of all waste and a disposal rate of not more than 5% to landfill	Between 01/01/2021 – 31/12/2021 the recycling rate was 87%	Compliant

Condition	Requirement	Tracking	Compliant/Not Compliant/Not triggered
A11	Stockpiles of waste and recycled product on-site must not be more than seven (7) metres in height when measured from the finished ground level of the site.	Compliant. Stockpile height markers are installed on site	Compliant
A12	Heavy vehicles are not permitted to access Werribi Street.	Noted in OTPM plan.	Compliant
A13	The date of commencement of each of the following phases of the Development must be notified to the Department in writing, at least one month before that date: (a) construction; NSW Government 2 Mayfield West Resource Recovery Facility Department of Planning and Environment (SSD 7698) (b) operation; (c) cessation of operations; and (d) decommissioning.	a) Construction 20/04/2018 b) Operation 25/09/2018	Compliant
A14	If the construction or operation or decommissioning of the Development is to be staged, the Department must be notified in writing at least one month before the commencement of each stage, of the date of commencement and the Development to be carried out in that stage.	Noted	Not Triggered
A15	With the approval of the Secretary, the Applicant may: (a) prepare and submit any strategy, plan or program required by this consent on a staged basis (if a clear description is provided as to the specific stage and scope of the	Noted	Not Triggered

Condition	Requirement	Tracking	Compliant/Not Compliant/Not triggered
	Development to which the strategy, plan or program applies, the relationship of the stage to any future stages and the trigger for updating the strategy, plan or program); (b) combine any strategy, plan or program required by this consent (if a clear relationship is demonstrated between the strategies, plans or programs that are proposed to be combined); and (c) update any strategy, plan or program required by this consent (to ensure the strategies, plans and programs required under this consent are updated on a regular basis and incorporate additional measures or amendments to improve the environmental performance of the Development).		
A16	If the Secretary agrees, a strategy, plan or program may be staged or updated without consultation being undertaken with all parties required to be consulted in the relevant condition in this consent.	Noted	Not Triggered
A17	If approved by the Secretary, updated strategies, plans or programs supersede the previous versions of them and must be implemented in accordance with the condition that requires the strategy, plan or program.	Noted in Section 5.6 of OEMP, version 5	Not Triggered
A18	The Applicant must retain all weighbridge records as required by the POEO (Waste) Regulation and for the life of	Compliant. Noted in Section 4.2 of OEMP, version 5	Compliant

Condition	Requirement	Tracking	Compliant/Not Compliant/Not triggered
	the Development. The weighbridge records must be made immediately available on request by the Secretary and/or the EPA.		
A19	The Applicant must retain waste classification records for all wastes received on the site and waste disposed from the site for the life of the Development. The waste classification records must be made immediately available on request by the EPA and/or the Secretary.	Compliant. Noted in Section 4.2 and Appendix D of OEMP, version 5	Compliant
A20	Where conditions of this consent require consultation with an identified party, the Applicant must: (a) consult with the relevant party prior to submitting the subject document to the Secretary for approval; and (b) provide details of the consultation undertaken including: (i) a description of how matters raised by those consulted have been resolved to the satisfaction of both the Applicant and the party consulted; and (ii) details of any disagreement remaining between the party consulted and the Applicant and how the Applicant has addressed the matters not resolved.	Consultation documented as required in OTPMP (Appendix G) and SWCMP (Appendix E) of OEMP, version 5.	Not Triggered
A21	The Applicant must ensure that all licences, permits and approval/consents are obtained as required by law and maintained as required throughout the life of the Development. No condition of this consent removes the	Compliant. Noted in Section 2 of OEMP, version 5.	Compliant

Condition	Requirement	Tracking	Compliant/Not Compliant/Not triggered
	obligation for the Applicant to obtain, renew or comply with such licences, permits or approval/consents.		
A22	All new buildings and structures, and any alterations or additions to existing buildings and structures, that are part of the Development, must be constructed in accordance with the relevant requirements of the BCA.	N/A to operations	Not Triggered
A23	Prior to the commencement of the operations, the Applicant must obtain a Building Information Certificate from Council in accordance with Division 6.7 of the Environmental Planning and Assessment Act 1979. Note: • Under Part 4A of the EP&A Act, the Applicant is required to obtain construction and occupation certificates for the proposed building works. • Part 8 of the EP&A Regulation sets out the requirements for the certification of the Development.	N/A to operations	Not Triggered
A24	Prior to the construction of any utility works associated with the Development, the Applicant must obtain relevant approvals from service providers	Compliant	Compliant
A25	Before the commencement of construction, the Applicant must: (a) consult with the relevant owner and provider of services that are likely to be affected by the Development to make suitable arrangements for access to, diversion,	Compliant. Dilapidation report submitted to Jeremy Slattery on 10/05/2018	Compliant

Condition	Requirement	Tracking	Compliant/Not Compliant/Not triggered
	protection and support of the affected infrastructure; (b) prepare a dilapidation report identifying the condition of all public infrastructure in the vicinity of the site (including roads, gutters and footpaths); and (c) submit a copy of the dilapidation report to the Secretary and Council.		
A26	Unless the Applicant and the applicable authority agree otherwise, the Applicant must: (a) repair, or pay the full costs associated with repairing, any public infrastructure that is damaged by carrying out the Development; and (b) relocate, or pay the full costs associated with relocating any infrastructure that needs to be relocated as a result of the Development.	Noted	Not Triggered
A27	The Applicant must ensure that all of its employees, contractors (and their sub-contractors) are made aware of, and are instructed to comply with, the conditions of this consent relevant to activities they carry out in respect of the Development.	Noted in Section 5.2, OEMP, version 5.	Compliant
A28	Prior to the commencement of the operations, a contribution must be paid to Council in accordance with Section 7.12 of the EP&A Act, in particular the City of Newcastle Section 94A Development Contributions Plan 2009 (Updated July 2017) (adjusted on a quarterly basis	Compliant. Paid on 11/07/2018. Receipt sent to Bruce Zhang and Kate Masters on 26/07/2018.	Compliant

Condition	Requirement	Tracking	Compliant/Not Compliant/Not triggered
	(from the date of this consent), to account for movements in the Australian Bureau of Statistics Consumer Price Index – Building Construction (NSW)). A receipt for the payment to Council of the Section 7.12 Levy Contributions must be submitted to the Secretary prior to the commencement of the operations. Note: The Section 7.12 Levy as determined at the date of this consent is \$3938.69		
A29	All plant and equipment used on site, or to monitor the performance of the development must be: (a) maintained in a proper and efficient condition; and (b) operated in a proper and efficient manner	Compliant. Noted in Sections 4.7, 4.8 & 4.13 and relevant sub plans of OEMP, version 5.	Compliant
A30	Prior to the commencement of operations and in order for the development of land to proceed in a coordinated and orderly manner and to avoid potential conflicts with this consent, the Applicant must modify DA2015/0291 (described in Table 1) pursuant to Section 4.17(1)(b) of the Environmental Planning and Assessment Act 1979 and Clause 97 of the Environmental Planning and Assessment Regulation 2000 such that the recycling facility including acceptance of up to 90,000 tonnes per annum of waste (pre-classified general solid wastes (non-putrescible waste)) is removed from the development consent.	Submitted to Council and DPIE 04/10/2018. On request of Council letter with revised wording submitted to Council and DPIE on 01/11/2018. Confirmation received from Council 06/11/2018.	Compliant

Condition	Requirement	Tracking	Compliant/Not Compliant/Not triggered
A31	Within 12 months of the commencement of SSD-7698-MOD-1 and in order for the development of land to proceed in a coordinated and orderly manner and to avoid potential conflicts with this consent, the Applicant must modify DA2015/0291 pursuant to Section 4.17(1)(b) of the Environmental Planning and Assessment Act 1979 and Clause 97 of the Environmental Planning and Assessment Regulation 2000 to amend the DA2015/0291 boundary to remove those areas to be included within the site under SSD-7698-MOD-1.	SSD-7698-MOD-1 commenced on 27/10/2021. DA2015/0291 will be modified by 27/10/2022.	In progress - correspondence has been submitted to Council in May 2022.
B1	All waste materials removed from the site must only be directed to a waste management facility or premises lawfully permitted to accept the materials.	Compliant. Noted in Section 4.2 and Appendix D of OEMP, version 5	Compliant
B2	Waste generated outside the site must not be received at the site for storage, treatment, processing, reprocessing, or disposal, except as expressly permitted by an EPL.	Compliant. Noted in Section 4.2 and Appendix D of OEMP, version 5	Compliant
B3	The Applicant must record the amount of waste (in tonnes) received at the site on a daily basis.	Compliant. Noted in Section 4.2 and Appendix D of OEMP, version 5	Compliant
B4	The Applicant must retain all sampling and waste classification data for the life of the Development in accordance with the requirements of the EPA.	Compliant. Noted in Sections 4.2 & 4.3 and Appendix D of OEMP, version 5	Compliant

Condition	Requirement	Tracking	Compliant/Not Compliant/Not triggered
B5	No biochar production or storage is approved under the terms of this consent	Noted in Section 4.2 and Appendix D of OEMP, version 5	Compliant
B6	The Applicant must only receive waste on site that is authorised for receipt by an EPL.	Compliant. Noted in Sections 4.2 & 4.3 and Appendix D of OEMP, version 5	Compliant
B7	The Applicant must ensure any waste generated on the site during construction and from general office activities is classified in accordance with the EPA's Waste Classification Guidelines, 2014 or its latest version, and disposed of to a facility that may lawfully accept the waste.	Noted in Section 4.2 and Appendix D of OEMP, version 5	Compliant
B8	Loads predominantly containing glass are not permitted to be crushed at the site.	Noted in Section 4.2 and Appendix D of OEMP, version 5	Compliant
B9	The Applicant must: (a) implement auditable procedures to: (i) ensure the site does not accept wastes that are prohibited; and (ii) screen incoming waste loads. (b) ensure that: (i) all waste types that are controlled under a tracking system have the appropriate documentation prior to acceptance at the site; (ii) all waste received at the site must be recorded in accordance with clause 27 of the POEO (Waste) Regulation; (iii) details of the quantity, type and source of wastes received on the site must be provided to the EPA and the Secretary when requested; and (iv) staff receive adequate training in order to be able to recognise	Noted in Section 4.2 and Appendix D of OEMP, version 5	Compliant

Condition	Requirement	Tracking	Compliant/Not Compliant/Not triggered
	and handle any hazardous or other prohibited waste including asbestos.		
B10	The Applicant must assess and classify all liquid and non-liquid wastes to be taken off site in accordance with the EPA's Waste Classification Guidelines Part 1: Classifying Waste, November 2014, or its latest version and dispose of all wastes to a facility that may lawfully accept the waste.	Noted in Sections 4.2 & 4.3 and Appendix D of OEMP, version 5	Compliant
B11	All waste must be: (a) stored wholly within the designated waste stockpile areas. (b) loaded and unloaded within the designated loading and unloading areas.	Noted in Section 4.2 and Appendix D of OEMP, version 5	Compliant
B12	<p>From the commencement of operations, the Applicant must implement a Waste Monitoring Program for the Development. The program must:</p> <p>(a) be prepared by a suitably qualified and experienced person(s) prior to the commencement of operations;</p> <p>(b) include suitable provision to monitor the:</p> <p>(i) quantity, type and source of waste received on site; (ii) type of waste and the material crushed and shredded on site;</p>	Noted in Sections 4.2 & 4.3 and Appendix D of OEMP, version 5.	Compliant

Condition	Requirement	Tracking	Compliant/Not Compliant/Not triggered
	<p>(iii) quantity, type and quality of the outputs produced on site; and</p> <p>(iv) number of days crushing has occurred per calendar year.</p> <p>(c) ensure that:</p> <p>(i) all waste that is controlled under a tracking system has the appropriate documentation prior to acceptance at the site; and</p> <p>(ii) staff receive adequate training to be able to recognise and handle any hazardous or other prohibited waste including asbestos.</p>		
B13	<p>Prior to the commencement of operations, the Applicant must prepare a Waste Management Plan (WMP) for the Development to the satisfaction of the Secretary. The WMP must form part of the OEMP required by Condition C4 and be prepared in accordance with Condition C7. The WMP must: (a) detail the type and quantity of waste to be received during operation of the Development; (b) include details of stockpile limits in the incoming waste receival area and waste storage areas; (c) include procedures for ensuring no build-up of waste will occur in the incoming</p>	Compliant. Appendix D of OEMP, version 5	Compliant

Condition	Requirement	Tracking	Compliant/Not Compliant/Not triggered
	waste receival area during unexpected machinery breakdown and 24-hour waste receival for major infrastructure projects; and (d) details the requirements for non-conforming waste handling and removal.		
B14	The Applicant must: (a) not commence the operations until the Waste Management Plan required by Condition B13 is approved by the Secretary; and (b) implement the most recent version of the Waste Management Plan approved by the Secretary	OEMP, version 5 approved by the Secretary	Compliant
B15	The Applicant must: (a) implement suitable measures to manage pests, vermin and declared noxious weeds on the site; and (b) inspect the site on a regular basis to ensure that these measures are working effectively, and that pests, vermin or noxious weeds are not present on site in sufficient numbers to pose an environmental hazard or cause the loss of amenity in the surrounding area. Note: For the purposes of this condition, noxious weeds are those species subject to an order declared under the Noxious Weed Act 1993.	Noted in Section 4.9 of OEMP, version 5.	Compliant
B16	Prior to the commencement of construction, the Applicant must install and maintain suitable erosion and sediment control measures on-site, in accordance with the relevant	N/A Construction	Compliant

Condition	Requirement	Tracking	Compliant/Not Compliant/Not triggered
	requirements in the latest version of the Managing Urban Stormwater: Soils and Construction Guideline and the Erosion and Sediment Control Plan included in the CEMP required by Condition C1.		
B17	The Development must comply with Section 120 of the POEO Act, which prohibits the pollution of waters, except as expressly provided in an EPL.	Noted in Section 2.2 of OEMP, version 5	Compliant
B18	Any discharge or water quality criteria specified under the EPL must be complied with.	Noted in Section 4.5 and Appendix E of OEMP, version 5	Compliant
B19	Surface water must only be discharged from the location specified in the EPL.	Noted in Section 4.5 and Appendix E of OEMP, version 5	Compliant
B20	Overland flow from the Development must be contained within the sealed areas of the site.	Noted in Section 4.5 and Appendix E of OEMP, version 5	Compliant
B21	Any spills must be contained and disposed of at a licenced facility.	Noted in Section 4.5 and Appendix E of OEMP, version 5	Compliant
B22	Any servicing or repair work on motor vehicles or mobile plant is to be carried out within a sealed area that has environmental controls appropriate for servicing or repair work. This must include bunding where there this work could result in liquids being spilled.	Noted in Section 4.5 and Appendix E of OEMP, version 5	Compliant

Condition	Requirement	Tracking	Compliant/Not Compliant/Not triggered
B23	The floor of the truck wash is to be suitably graded and or bunded across the external door openings to prevent the escape of stored materials, process water or spilt liquids.	Truck wash not constructed yet.	Not Triggered
B24	All excess water from the truck wash and wheel wash is to be discharged into suitable holding tanks and removed from the facility for treatment at an appropriately licensed facility or via trade waste.	N/A	Compliant
B25	<p>Prior to the commencement of operations, the Applicant must design, install and operate a surface water management system for the Development. The system must:</p> <p>(a) be designed and constructed by a suitably qualified and experienced person(s) endorsed by the Secretary; NSW Government 6 Mayfield West Resource Recovery Facility Department of Planning and Environment (SSD 7698)</p> <p>(b) be generally in accordance with the conceptual design in the RTS, the letter titled Mayfield West Recycling Facility (SSD 7698) – Water Assessment, dated 8 September 2017 prepared by EMM and applicable Australian Standards;</p> <p>(c) ensure that the system capacity has been designed in accordance with Australian Rainfall and Runoff (Engineers</p>	Completed and compliance certificate obtained as outlined in B26.	Compliant

Condition	Requirement	Tracking	Compliant/Not Compliant/Not triggered
	<p>Australia, 2016) and Managing Urban Stormwater: Council Handbook (EPA, 1997);</p> <p>(d) include detention basins with a minimum capacity to contain the 90th percentile rainfall over any consecutive 5 day period in accordance with Managing Urban Stormwater - Soils and Construction Vol. 2B: Waste landfills (Department of Environment and Climate Change NSW, 2008). The wet weather capture capacity requirements of the sediment basins and water treatment system may be modified by the EPL subject to the required surface water characterisation (Condition B33);</p> <p>(e) ensure vegetation within the sediment basin and perimeter drain has been removed and the surface water infrastructure has been sealed to prevent surface water infiltration to groundwater; and</p> <p>(f) bund any potentially contaminating waste, any surface water leaving this area must be directed to the three-stage pit or equivalent for treatment, the water must then be directed to holding tanks for testing and depending on its quality either discharged to the perimeter drain or sewer as trade waste see Appendix A.</p>		

Condition	Requirement	Tracking	Compliant/Not Compliant/Not triggered
B26	The Applicant must provide a Compliance Certificate to the Secretary prior to the commencement of operations, that confirms the surface water management system has been designed and installed as per the requirements of Condition B25 and the alterations will not impede or divert natural surface water runoff so as to cause a nuisance to adjoining properties.	Submitted 26/07/2018	Compliant
B27	Prior to the commencement of operations, works-as-executed drawings signed by a registered surveyor must be submitted to the certifying authority demonstrating that the stormwater drainage and finished ground levels have been constructed as approved.	Compliant	Compliant
B28	The surface water management system must be operated and maintained for the duration of the Development.	Noted in Section 4.5 and Appendix E of OEMP, version 5.	Compliant
B29	The Applicant must maintain the surface water management system to minimise the infiltration of surface water to groundwater. This includes inspecting the infrastructure monthly for cracking and vegetation break through, removing the vegetation and sealing the infrastructure. Any maintenance on the surface water management system must be undertaken by a suitably	Noted in Section 4.5 and Appendix E of OEMP, version 5.	Compliant

Condition	Requirement	Tracking	Compliant/Not Compliant/Not triggered
	qualified and experienced person(s), a record of these works must be kept for the life of the Development.		
B30	The Applicant must maintain the surface water detention basins on site with a minimum capacity to contain the 90th percentile rainfall over any consecutive 5-day period in accordance with Managing Urban Stormwater - Soils and Construction Vol. 2B: Waste landfills. The Managing Urban Stormwater series of document relate to clean sediment and therefore the wet weather capture and storage capacity requirements of the sediment basins and treatment systems may be modified by the EPL based on the required surface water characterisation (Condition B33).	Noted in Section 4.5 and Appendix E of OEMP, version 5	Compliant
B31	The Applicant must ensure that a visible marker is installed in the sediment detention basin in a position that shows the freeboard in the basin that equates to the volume required to contain all rainfall and runoff in the catchment from a 90th percentile rainfall event over any consecutive 5-day period.	Compliant. Noted in Section 4.5 and Appendix E of OEMP, version 5	Compliant
B32	All hand unloading activities must be carried out in the hand unloading area as shown on the Development Layout Plan in Appendix A. All waste unloaded at the hand	Noted.	Compliant

Condition	Requirement	Tracking	Compliant/Not Compliant/Not triggered
	unloading area must be unloaded and stockpiled in the hand unload shed or hand unloading area as shown on the Development Layout Plan in Appendix A.		
B32A	The Applicant must not commence the external unloading or storing of hand unload waste in the hand unloading area as shown on the Development Layout Plan in Appendix A prior to the Surface Water Validation Report (SWVR) in Condition B35 being provided to the satisfaction of the Planning Secretary.	Noted.	Compliant
B32B	The hand unloading shed shown on the Development Layout Plan in Appendix A must be fitted with an internal dust suppression system.	Noted.	Compliant
B33	Prior to the commencement of operations, the Applicant must prepare a Surface Water Characterisation and Mitigation Plan (SWCMP) to the satisfaction of the Secretary to characterise the surface water and implement a mitigation plan, the SWCMP must form part of the OEMP required by Condition C4 and be prepared in accordance with Condition C7. The SWCMP must:	Appendix E of OEMP, version 5	Compliant

Condition	Requirement	Tracking	Compliant/Not Compliant/Not triggered
	<p>(a) be carried out by a suitably qualified and experienced person(s) whose appointment has been endorsed by the Secretary;</p> <p>(b) be prepared in consultation with the EPA;</p> <p>(c) detail the triggers of when the pump which transfers surface water from the three-stage pit to the holding tanks would be activated;</p> <p>(d) detail the type and size of the bunding around the potentially contaminating waste area;</p> <p>(e) detail the frequency of overflows from the three-stage pit and sediment basin;</p> <p>(f) collect representative samples, including a minimum of four surface water samples from the sediment basin and the three-stage pit. The surface water samples must be analysed for the analytical suite identified in Table 3.16 of the RTS;</p> <p>(g) characterise the surface water for the entire development and detail the potential impact of discharges on receiving surface waters with reference to ANZECC (2000) assessment criteria; NSW Government 7 Mayfield</p>		

Condition	Requirement	Tracking	Compliant/Not Compliant/Not triggered
	<p>West Resource Recovery Facility Department of Planning and Environment (SSD 7698)</p> <p>(h) be based on the results of the surface water characterisation, investigate all practical alternatives to discharge and whether sediment basin sizing, at-source pollution controls, tertiary water treatment, water treatment plants and other treatment and reuse options are appropriate;</p> <p>(i) provide the Secretary with a timeframe for and implement the measures identified in sub-clause (h); (j) consider the human health risks associated with the surface water reuse process at the site;</p> <p>(k) include details of the maintenance procedures of the sediment basins and surface water infrastructure; (l) describe the procedures for maintaining vegetation along the perimeter drain and sediment basin;</p> <p>(m) establish an ongoing surface water monitoring program to validate the proposed mitigation measures. The surface water monitoring program must provide monitoring details of surface water flows, quality, storage and discharge limits;</p>		

Condition	Requirement	Tracking	Compliant/Not Compliant/Not triggered
	<p>(n) identify measures for managing pollutant exceedances; and</p> <p>(o) identify contingency options to account for any mitigation measures that do not adequately address the site water pollution risks.</p>		
B34	<p>The Applicant must:</p> <p>(a) not commence the operations until the SWCMP required by Condition B33 is approved by the Secretary; and</p> <p>(b) implement the most recent version of the SWCMP approved by the Secretary for the duration of the development.</p>	Approved 25/09/2018.	Compliant
B35	<p>Within six months of the commencement of operations and following the management measures being implemented as per SWCMP (Condition B33), the Applicant must provide a Surface Water Validation Report (SWVR) to the satisfaction of the Secretary. The SWVR must:</p> <p>(a) be carried out by a suitably qualified and experienced expert whose appointment has been endorsed by the Secretary;</p>	<p>On 12/08/2020 letter received from DPIE requesting further information – consultation with the EPA.</p> <p>On 16/10/2020 EPA's comments on the SWVR were received.</p>	In progress – Not compliant yet.

Condition	Requirement	Tracking	Compliant/Not Compliant/Not triggered
	<p>(b) be prepared in consultation with the EPA;</p> <p>(c) collect a minimum of four surface water samples from the sediment basin and four from the three-stage pit system;</p> <p>(d) characterise the surface water data (samples) and detail the potential impact of discharges on receiving surface waters with reference to ANZECC (2000) assessment criteria;</p> <p>(e) compare the results with the surface water characterisation in the SWCMP (Condition B33);</p> <p>(f) ensure surface water is being managed in accordance the EPL;</p> <p>(g) provide an assessment of the effectiveness of implemented mitigation measures;</p> <p>(h) if necessary, provide additional mitigation measures to control and/or treat all pollutants to ensure the ANZECC (2000) assessment criteria can be met including further storage or the installation of a water treatment plant; and</p>	<p>On 28/10/2020 a meeting was held with Benedict and the EPA. The key agreements out of the meeting were:</p> <ul style="list-style-type: none"> - Update the site water balance - Undertake a further review of the water management system once the water balance update is finalised <p>On 25/11/2020 letter received from DPIE granting an extension for the SWVR, Due by 29 July 2021.</p> <p>Submitted to the Department on 11/03/2022. RFI received from the Department on 21/03/2022, with due date of 21/06/2022.</p>	

Condition	Requirement	Tracking	Compliant/Not Compliant/Not triggered
	(i) update the SWCMP to reflect any changes to the surface water management system.		
B36	Any alterations to the surface water management system identified in the SWVR must be implemented prior to any further controlled discharges occurring to the satisfaction of the Secretary.	Noted in Appendix E of OEMP, version 5	Compliant
B37	The Applicant must comply with any amended surface water quality criteria and discharge limits identified in the EPL	Noted in Appendix E of OEMP, version 5	Compliant
B38	Within 18 months of the commencement of operations, the Applicant must commission an independent Surface Water Audit of the Development to the satisfaction of the Secretary. The audit must: (a) be carried out by a suitably qualified and experienced expert whose appointment has been endorsed by the Secretary; (b) be conducted in consultation with the EPA; (c) audit the Development whilst it is in operation; (d) validate the development against the SWCMP required by Condition B33; (e) include a summary of any EPL water quality exceedances; (f) review the design and management practices of the Development against industry best practice for surface water; (g) include an action plan that identifies and prioritises additional surface	A letter of endorsement was received from the Department on 25/03/2020. Independent SWA undertaken on 30/06/2020.	Compliant

Condition	Requirement	Tracking	Compliant/Not Compliant/Not triggered
	water mitigation measures and/or treatment options that may be necessary to reduce surface water impacts; and (h) provide a further program of monitoring to address water quality issues that may emerge over time.		
B39	Within three months of commissioning this audit, the Applicant must submit a copy of the audit report to the Secretary, together with its response to any recommendations contained in the audit report. The Applicant must comply with any reasonable requirement(s) of the Secretary arising from the Surface Water Audit.	<p>SWA and RAR was submitted to DPIE on 2/07/2020.</p> <p>Letter received from DPIE on 10/08/2020 outlining SWA satisfies requirements of B38. DPIE required Benedict to liaise with FRNSW to obtain approval of plans.</p> <p>Approval was obtained and submitted to the Department on 4/09/2020.</p> <p>Email received on the 11/09/2020 acknowledging receipt of the updated RAR and DPIE 'has no further comments on this document'.</p>	Compliant
B40	Within 12 months of the commencement of operations the Applicant must conduct a Groundwater Monitoring Program to the satisfaction of the Secretary. The program must: (a) be carried out by a suitably qualified and experienced expert in consultation with the EPA; (b)	A revised Groundwater Monitoring Program was submitted to the Department on 04/03/2020.	Compliant

Condition	Requirement	Tracking	Compliant/Not Compliant/Not triggered
	ascertain the potential for leakage of the sediment basin and perimeter drain to groundwater; (c) detail baseline data, groundwater levels and groundwater quality against the relevant criteria; (d) provide mitigation and contingency measures to prevent the sediment basins from leaking; and (e) identify a program for ongoing groundwater monitoring and reporting.	On 30/04/2020 letter of approval was received from DPIE.	
B41	Within three months of the completion of the Groundwater Monitoring Program, the Applicant must submit a copy of the Groundwater Monitoring Program as identified in Condition B40 to the Secretary and the EPA.	As per the report submitted for B40 the Groundwater Monitoring Program will occur should a trigger occur as outlined in B40 report.	Not Triggered
B42	As a minimum, the Applicant must ensure the 40,000 litre self-bunded diesel tank is managed as follows: (a) the tank must be installed in the centre of the site in accordance with Figure 3.1 of the RTS; (b) the tank must be installed in accordance with the relevant Australian Standards, must be above ground and be protected against impact from heavy vehicles; (c) the refuelling area must be covered with an awning to minimise dirty water run-off;	Noted in Sections 4.5 & 4.13 of OEMP, version 5.	Compliant

Condition	Requirement	Tracking	Compliant/Not Compliant/Not triggered
	<p>(d) overfilling of the tank must be prevented through gauging and monitoring of the tank's contents;</p> <p>(e) hoses used for transfer of diesel must be inspected weekly;</p> <p>(f) in an emergency, flow of liquid from the storage tank to a consuming device must be immediately shut off;</p> <p>(g) the shut off valve must comply with the relevant Australian Standard and be fire resistant;</p> <p>(h) the diesel tank and re-fuelling area must be bunded within an area of impervious hardstand; and (i) a diesel spill kit must be stored in the refuelling area and deployed in the event of a spill.</p>		
B43	<p>To ensure that chemical spills and fire-water are contained on-site, prior to the commencement of operations and to the satisfaction of FRNSW, the Applicant must ensure:</p> <p>(a) a stormwater isolation valve is installed, the stormwater isolation valve must be closed at all times unless stormwater is being discharged and its closure must be monitored weekly;</p>	Noted in Sections 4.12 & 4.13 and Appendix K of OEMP, version 5.	Compliant

Condition	Requirement	Tracking	Compliant/Not Compliant/Not triggered
	<p>(b) during an incident, the stormwater isolation valve must remain in the closed position until manually opened upon confirmation that stormwater isolation is no longer required or once any contaminated water is disposed via trade waste or at a site that can lawfully receive the waste; and</p> <p>(c) the location of the stormwater isolation valve and any associated controls must be clearly identified on the site's fire hydrant block plan, fire sprinkler block plan and the site plan located within the site's Emergency Response Plan prepared as part of the OEMP as required by Condition C7.</p>		
B44	The Applicant must implement all reasonable and feasible measures to minimise the impact on the site's access road and any impacts on 1 McIntosh Drive, Mayfield West (Lot 16 in DP 270249).	Noted in Section 4.6 and Appendix G of OEMP, version 5.	Compliant
B45	Prior to the commencement of operations, the vehicular entrance and exit driveways and the direction of traffic movement within the site are to be permanently marked on the pavement surface.	Noted in Section 4.6 and Appendix G of OEMP, version 5	Compliant
B46	All customers are not permitted to leave their vehicles anywhere on the site other than the public unloading area	Noted in Section 4.6 and Appendix G of OEMP, version 5.	Compliant

Condition	Requirement	Tracking	Compliant/Not Compliant/Not triggered
	and to access the pedestrian walkways between marked car parking spaces and the weighbridge and office area.		
B46A	The Applicant must ensure a tipping inspector is present in the hand unloading area as shown on the Development Layout Plan in Appendix A when vehicles or customers are present.	Noted.	Compliant
B46B	Prior to the commencement of operations under Modification application SSD 7698 MOD 1, the Applicant must amend the bay wall in the heavy waste processing and stockpiling area shown on the Development Layout Plan in Appendix A to accommodate the largest vehicle entering the site to travel unobstructed through the heavy waste processing area.	Noted.	Compliant
B47	Prior to the commencement of operations, the Applicant must provide and mark 25 on-site parking spaces (including two accessible spaces) for staff and visitors to ensure that traffic associated with the Development does not utilise public and residential streets or public parking facilities. Parking areas are to be constructed in accordance with the latest version of Australian Standard 2890. All parking associated with the Development must be contained on site.	Noted in Section 4.6 and Appendix G of OEMP, version 5	Compliant

Condition	Requirement	Tracking	Compliant/Not Compliant/Not triggered
B48	Parking is only permitted within the designated parking spaces	Section 4.6 and Appendix G of OEMP, version 5	Compliant
B49	The Applicant must ensure: (a) all vehicular movement to and from the site must be in a forward direction; (b) internal roads, driveways and parking (including grades, turn paths, sight distance requirements, aisle widths, aisle lengths and parking bay dimensions) associated with the Development are maintained in accordance with the latest version of Australian Standard 2890.1 and Australian Standard 2890.2; (c) the swept path of the longest vehicle entering and exiting the site, as well as manoeuvrability through the site, is in accordance with the relevant AUSTROADS guidelines; (d) the Development does not result in any vehicles queuing on the public road network or along the sites access road owned known as 1 McIntosh Drive, Mayfield West (Lot 16 in DP 270249) which is subject to a right of carriageway; (e) heavy vehicles and bins associated with the Development are not to be parked on local roads or footpaths in the vicinity of the site; (f) only light vehicles and trailers are permitted within the public unloading area, no heavy vehicles are permitted within the public unloading area; (g) all vehicles are wholly contained on site before being required to stop; (h) all loading and unloading of materials is carried out on-site in designated	Noted in Section 4.6 and Appendix G (Operational Traffic and Pedestrian Management Plan).	Compliant

Condition	Requirement	Tracking	Compliant/Not Compliant/Not triggered
	<p>areas; (i) the different activities such as unloading (public and contractor), processing and stockpiling areas at the site are clearly marked and separated by physical barriers to ensure safety is maintained; (j) signage must be erected to direct the public and contractors to the designated unloading and loading areas; (k) public and contractor unloading areas are kept separate; (l) pedestrian access paths are clearly marked and interactions between pedestrians and vehicles must be minimised; (m) an outbound wheel wash must be installed behind the exit weighbridge as per Figure 3.9 of the RTS; (n) signage is erected and vehicles at the site do not exceed a speed of 20 km/h; (o) vehicle manoeuvring areas must always be kept clear of any obstacles, including parked cars; and (p) the turning areas in the car park are kept clear of any obstacles, including parked cars, at all times.</p>		
B50	<p>Prior to the commencement of operations, the Applicant must prepare an Operational Traffic and Pedestrian Management Plan (OTPMP) for the Development to the satisfaction of the Secretary. The plan must form part of the OEMP required by Condition C4 and be prepared in accordance with Condition C7. The OTPMP must: (a) be prepared by a suitably qualified and experienced person(s); (b) be prepared in consultation with Council; (c) detail the</p>	Appendix G of OEMP, version 5	Compliant

Condition	Requirement	Tracking	Compliant/Not Compliant/Not triggered
	<p>measures that would be implemented to ensure road safety and network efficiency during operation; (d) detail measures to ensure public safety is maintained at all times including marking pedestrian access ways and signage to direct the public to the public unloading area; (e) detail measures to minimise the potential for conflicts between light vehicles entering and exiting the hand unloading area as shown on the Development Layout Plan in Appendix A and heavy vehicles and mobile plant; (f) detail how traffic exiting the main processing building will give way to traffic exiting the segregated heavy waste processing and stockpiling area to ensure vehicles safely exit the site; (g) detail heavy vehicle routes, access and parking arrangements; (h) include a Driver Code of Conduct to: (i) minimise the impact on the local and regional road network; (ii) minimise conflicts with other road users; (iii) minimise road traffic noise; and (iv) ensure truck drivers use Steel River Boulevard and McIntosh Drive (the use of Murray Dwyer Circuit is not permitted); (v) ensure truck drivers use specified routes (i) include a program to monitor the effectiveness of these measures; and (j) if necessary, detail procedures for notifying residents and the community (including local schools), of any potential disruptions to routes.</p>		

Condition	Requirement	Tracking	Compliant/Not Compliant/Not triggered
B51	The Applicant must: (a) not commence the operations until the OTPMP required by Condition B50 is approved by the Secretary; and (b) implement the most recent version of the OTPMP approved by the Secretary for the duration of the development.	Approved 25/09/2018.	Compliant
B52	Before the commencement of the operations, the Applicant must install a suitable meteorological station on the site that complies with the requirements in the EPA's Approved Methods for Sampling of Air Pollutants in New South Wales.	Installed 23/08/2018	Compliant
B53	The Applicant must maintain the meteorological station to the satisfaction of the EPA for the life of the development.	Noted in Section 4.7 and Appendix F of OEMP, version 5	Compliant
B54	All reasonable steps must be taken to minimise dust generated during all works authorised by this consent.	Noted in Section 4.7 and Appendix F of OEMP, version 5.	Compliant
B55	The Applicant must ensure that: (a) all on-site roads and car parking areas are sealed with concrete or asphalt; (b) all operating, storage, unloading and loading areas must be sealed with concrete, asphalt or other impervious	Noted in Section 4.7 and Appendix F of OEMP, version 5.	Compliant

Condition	Requirement	Tracking	Compliant/Not Compliant/Not triggered
	<p>barrier(s) of the same or greater quality; (c) water sprinklers at the crushing and screening plant must be utilised at all time when the plant is operational;</p> <p>(d) dust suppressants must be used to prevent particulate emissions from stockpiles and other dust generating sources;</p> <p>(e) trucks and vehicles entering and leaving the Development that are carrying loads of dust generating materials must have their loads covered at all times, except during loading and unloading;</p> <p>(f) crushing occurs for no more than 46 days per year in total;</p> <p>(g) crushing does not occur during adverse meteorological conditions;</p> <p>(h) all operations and activities occurring at the Development must be carried out in a manner that minimises the emissions of air pollutants from the Development;</p> <p>(i) trucks associated with the Development do not track dirt onto the public road network;</p>		

Condition	Requirement	Tracking	Compliant/Not Compliant/Not triggered
	(j) public roads used by these trucks are kept clean; and (k) any works are carried out progressively on site to minimise exposed surfaces.		
B56	Equipment must be installed and operated in accordance with best practice to ensure that the development complies with all load limits, air quality criteria, air emission limits and air quality monitoring requirements as specified in the EPL applicable to the site.	Noted in Section 4.7 and Appendix F of OEMP, version 5	Compliant
B57	Prior to the commencement of operations, the Applicant must prepare an Air Quality Management Plan (AQMP) to the satisfaction of the Secretary. The AQMP must form part of the OEMP required by Condition C4 and be prepared in accordance with Condition C7. The AQMP must: (a) be prepared by a suitably qualified and experienced person(s); (b) be prepared in consultation with the EPA; (c) detail and rank all emissions from all sources of the Development, including particulate emissions and odour; (d) describe the measures that will be implemented to minimise the potential risks to adverse air quality in the area including: (i) the management and mitigation measures to be employed at the site; (ii) plant and equipment being maintained to ensure that it is in good order; (iii) how the air quality	Appendix F of OEMP, version 5	Compliant

Condition	Requirement	Tracking	Compliant/Not Compliant/Not triggered
	impacts of the development will be minimised during adverse meteorological conditions or extraordinary events; (iv) identification of high emission generating operational activities, including proposed times when these works will be carried out (including respite periods if required) and mitigation measures to minimise adverse impacts from these activities; (v) compliance with the relevant conditions of this consent; (e) identify the control measures that will be implemented for each emission source; and (f) define what constitutes an air quality incident and includes a protocol for identifying and notifying the Department and relevant stakeholders of any air quality incidents.		
B58	The Applicant must: (a) not commence the operations until the AQMP required by Condition B57 is approved by the Secretary: and (b) implement the most recent version of the AQMP approved by the Secretary for the duration of the development.	Approved 25/09/2018.	Compliant
B59	The Applicant must carry out Air Quality Monitoring and Reporting of the Development for the first three crushing events following the commencement of the operations to the satisfaction of the Secretary. The monitoring and reporting must: (a) be carried out by a suitably qualified and experienced person(s) whose appointment has been	Noted in Appendix F of OEMP, version 5. No crushing has occurred between 01/01/2021 and 31/12/2021.	Not Triggered

Condition	Requirement	Tracking	Compliant/Not Compliant/Not triggered
	endorsed by the Secretary; (b) monitor the dust emissions whilst the Development is in operation and crushing (as described section 3.5 of the RTS) is occurring; (c) include a summary of air emission related complaints and any actions that were carried out to address the complaints; (d) validate the Development against air quality predictions in the RTS; (e) review design and management practices of the Development against industry best practice for dust emissions; and (f) include an action plan that identifies and prioritises additional dust mitigation measures that may be necessary to reduce emissions.		
B60	Within three months of each monitoring event, the Applicant must submit a copy of the Air Quality Monitoring Report (Condition B59) to the Secretary, together with its response to any recommendations.	Noted	Not Triggered
B61	The Applicant must ensure the Development does not cause or permit the emission of any offensive odour (as defined in the POEO Act).	Noted in Section 4.7 Appendix F of OEMP, version 5	Compliant

Condition	Requirement	Tracking	Compliant/Not Compliant/Not triggered																												
B62	The Applicant must comply with the hours detailed in Table 2.	Noted in Section 3.5 of OEMP, version 5 and EPL 20771	Compliant																												
	Table 2: Hours of Work																														
	Activity			Day	Time	Construction	Monday to Friday	7 am to 6 pm	Saturday	8 am to 1 pm	Sunday and Public Holidays	Not Permitted	Waste Receival	Monday to Friday	6 am to 6 pm	Saturday	6 am to 5 pm	Sunday and Public Holidays	7 am to 3 pm	Waste Processing	Monday to Friday	6 am to 6 pm	Saturday	6 am to 5 pm	Sunday and Public Holidays	Not Permitted	Waste Dispatch	Monday to Friday	6 am to 6 pm	Saturday	6 am to 5 pm
	Activity			Day	Time																										
	Construction			Monday to Friday	7 am to 6 pm																										
				Saturday	8 am to 1 pm																										
				Sunday and Public Holidays	Not Permitted																										
	Waste Receival			Monday to Friday	6 am to 6 pm																										
Saturday		6 am to 5 pm																													
Sunday and Public Holidays		7 am to 3 pm																													
Waste Processing	Monday to Friday	6 am to 6 pm																													
	Saturday	6 am to 5 pm																													
	Sunday and Public Holidays	Not Permitted																													
Waste Dispatch	Monday to Friday	6 am to 6 pm																													
	Saturday	6 am to 5 pm																													

Condition	Requirement			Tracking	Compliant/Not Compliant/Not triggered
		Sunday and Public Holidays	Not Permitted		
B63	Works outside of the hours identified in Condition B62 may be undertaken in the following circumstances: (a) the works are inaudible at the nearest sensitive receivers; (b) for the delivery or dispatch of materials as requested by the NSW Police Force or other public authorities for safety reasons; or (c) where it is required in an emergency to avoid the loss of lives, property or to prevent environmental harm.			Noted in Section 3.5 of OEMP, version 5	Compliant

Condition	Requirement	Tracking	Compliant/Not Compliant/Not triggered
B64	Waste receipt is permitted on a 24-hour per day basis on limited occasions to facilitate major infrastructure projects. Limited occasions is defined as: (a) no greater than six times per year; and (b) only for a period of less than two weeks in length for each occasion.	Noted in Section 3.5 of OEMP, version 5	Compliant
B65	The Secretary, Council and all adjacent landowners must be notified no later than 48 hours prior to each of the 24-hour waste receipt periods referred to in Condition B64 along with a description of the major infrastructure projects which necessitate the 24-hour operations.	Noted in Section 3.5 of OEMP, version 5	Compliant
B66	During the 24-hour waste receipt period (as stipulated in Condition B64), the number of heavy vehicles accessing the site from 6 pm to 6 am must not exceed 12.	Noted in Section 3.5 of OEMP, version 5	Compliant
B67	The crusher and shredder are only permitted to be operated in the segregated heavy waste processing and stockpiling area, no further south than 130 m from the northern site boundary (see Appendix A).	Noted in Section 4.8 of OEMP, version 5	Compliant
B68	The mobile screens in the segregated heavy waste processing and stockpiling area must not be operated simultaneously with the crusher or shredder.	Noted in Section 4.8 of OEMP, version 5	Compliant

Condition	Requirement	Tracking	Compliant/Not Compliant/Not triggered
B69	The Applicant must: (a) implement best practice, including all reasonable and feasible noise management and mitigation measures to minimise operational, low frequency and traffic noise generated by the Development; (b) minimise the noise impacts of the Development during adverse meteorological conditions; (c) maintain the effectiveness of any noise suppression equipment on plant at all times and ensure defective plant is not used operationally until fully repaired; and (d) regularly assess noise emissions and relocate, modify and/or stop operations to ensure compliance with the relevant conditions of this consent.	Noted in Section 4.8 of OEMP, version 5.	Compliant
B70	The Applicant must ensure that noise generated by operation of the Development does not exceed the noise limits in Table 3. Table 3: Noise Limits dB(A)	Noted in Section 4.8. Quarterly noise monitoring is undertaken and results published on the website https://www.benedict.com.au/about/policies-compliance/	Compliant

Condition	Requirement					Tracking	Compliant/Not Compliant/Not triggered
		Day LAeq (15 minute)	Evening LAeq (15 minute)	Night LAeq (15 minute)	Night LAMax		
	R1	48	40	40	51		
	R2	49	41	41	52		
	R3	47	39	39	51		
	R4	47	39	39	50		
	R5	50	42	42	53		
	R6	48	41	41	51		
	R7	48	41	41	52		
	R8	48	40	40	52		
	R9	49	42	42	52		
	R10	49	41	41	51		
	R11	49	42	42	52		
	R12	42	41	41	48		
	R13	40	36	36	47		
	Mayfield West Primary School	Internal 35 dB(A) – Noisiest 1 hr period (when in use)					

Condition	Requirement		Tracking	Compliant/Not Compliant/Not triggered				
	<table><tr><td>Church of Christ</td><td>Internal 40 dB(A) LAeq, period (when in use)</td></tr><tr><td>Scout Hall</td><td>External 55 dB(A) Leq, period (when in use)</td></tr></table>	Church of Christ	Internal 40 dB(A) LAeq, period (when in use)	Scout Hall	External 55 dB(A) Leq, period (when in use)	<p>Note: Noise generated by the Development is to be measured in accordance with the relevant procedures and exemptions (including certain meteorological conditions) of the NSW Industrial Noise Policy. Refer to the plan in Appendix A for the location of residential sensitive receivers.</p>		
Church of Christ	Internal 40 dB(A) LAeq, period (when in use)							
Scout Hall	External 55 dB(A) Leq, period (when in use)							
B71	Vibration caused by construction at any residence or structure outside the site must be limited to: (a) for structural damage, German Standard DIN 4150 Part 3 Structural Vibration in Buildings. Effects on Structures; and (b) for human exposure, the acceptable vibration values set out in the Environmental Noise Management Assessing Vibration: A Technical Guideline (Department of Environment and Conservation, 2006).		Noted in Section 4.8 of OEMP, version 5	Compliant				
B72	Prior to the commencement of operations, the final design of the development must be finalised in consultation with and to the satisfaction of the Secretary and include suitable additional provisions for special hazards by specifically addressing Clauses E1.10 and E2.3 of Volume One of the		Noted in Section 4.12, Appendix K and Appendix L of OEMP, version 5.	Compliant				

Condition	Requirement	Tracking	Compliant/Not Compliant/Not triggered
	National Construction Code (NCC) Series. In particular, the following matters must be addressed: (a) Clauses E1.10 and E2.3 of Volume One of the NCC be complied with to the meet the operational requirements of FRNSW; (b) the stockpile storage within any building and/or open yard storage on the allotment be limited in size and volume and arranged to minimise fire spread; (c) the arrangement of stockpiles of combustible material, stored externally, on the allotment be sufficiently separated to permit FRNSW vehicle access between stockpiles; (d) the site must be serviced by a fire hydrant system that has a minimum water supply capable to extinguishing the sites largest fire load stockpile; (e) buildings which store recyclable material must include a smoke hazard system that facilitates FRNSW firefighting operations; (f) if deemed necessary by the Secretary, by virtue of applying Clauses E1.10 and E2.3 to the Development, that any significant building used to process recyclable material is provided with an appropriate fire suppression system; and (g) the containment on-site of fire water run-off.		
B73	If Aboriginal objects are uncovered during construction work in the immediate area, work must stop and the	Noted	Compliant

Condition	Requirement	Tracking	Compliant/Not Compliant/Not triggered
	Regional Operations Group of the OEH, Council and the Registered Aboriginal Parties are to be consulted.		
B74	The quantities of dangerous goods stored and handled at the site must be below the threshold quantities listed in the Department of Planning's Hazardous and Offensive Development Application Guidelines – Applying SEPP 33 at all times.	Noted in Sections 4.13 and 4.12 of OEMP, version 5	Compliant
B75	<p>Dangerous goods, as defined by the Australian Dangerous Goods Code, must be stored and handled strictly in accordance with: (a) all relevant Australian Standards; (b) for liquids, a minimum bund volume requirement of 110% of the volume of the largest single stored volume within the bund; and (c) the Environment Protection Manual for Authorised Officers: Bunding and Spill Management, technical bulletin (EPA,1997).</p> <p>In the event of an inconsistency between the requirements listed from a) to c) above, the most stringent requirement must prevail to the extent of the inconsistency.</p>	Noted in Sections 4.13 and 4.12 of OEMP, version 5	Not Triggered
B76	The Applicant must store all chemicals, fuels and oils used on-site in appropriately bunded areas in accordance with the requirements of all relevant Australian Standards, and EPA's Storing and Handling of Liquids: Environmental	Noted in Sections 4.13 of OEMP, version 5	Compliant

Condition	Requirement	Tracking	Compliant/Not Compliant/Not triggered
	Protection – Participants Manual (DECC, 2007) (as may be updated or replaced from time to time).		
B77	Any works carried out on the site that involve the disturbance of (or contact with) soil or groundwater are to be carried out in accordance with the requirements of the report titled Site Management Plan for Subsurface Disturbance Activities, McIntosh Drive Mayfield NSW. Ref: N4113204_SMP_Rev4_2Oct09, prepared by AECOM Pty Ltd, dated 2 October 2009.	Noted in Section 4.5 of OEMP, version 5	Not Triggered
B78	Prior to the commencement of operations, the main processing building and segregated heavy waste processing and stockpiling area must be sealed with either asphalt or concrete to minimise infiltration of surface water to groundwater.	Completed August 2018	Compliant
B79	Prior to the commencement of construction, the Applicant must prepare an unexpected finds protocol to ensure that potentially contaminated material is appropriately managed. The protocol must form part of the CEMP NSW Government 14 Mayfield West Resource Recovery Facility Department of Planning and Environment (SSD 7698) required by Condition C1 and must ensure any material identified as contaminated must be disposed off-site, with		Compliant

Condition	Requirement	Tracking	Compliant/Not Compliant/Not triggered
	the disposal location and results of testing submitted to Council, prior to its removal from the site.		
B80	The Applicant must maintain the landscaping and vegetation on the site in accordance with the approved Landscape Plan prepared by Terras Landscape Architects dated 9 September 2015 in Appendix A.	Noted in Section 3.3 and Appendix J of OEMP, version 5	Compliant
B81	The Applicant must ensure the lighting associated with the Development: (a) complies with the latest version of AS 4282 (INT) - Control of Obtrusive Effects of Outdoor Lighting; (b) is mounted, screened and directed in such a manner that it does not create a nuisance to surrounding properties or the public road network including at night; and (c) is not installed on the exterior of the Development and does not flash, chase or scintillate or contain promotional material of a visually intrusive nature.	Noted in Section 5.3 of OEMP, version 5	Compliant
B82	The Applicant must: (a) maintain the 1.8 m perimeter fence and security gates on the site in accordance with Council's requirements; and (b) ensure the security gates are locked whenever the site is not in operation or unattended.	Noted in Section 4.11 of OEMP, version 5	Compliant
B83	The Applicant must consult with the community regularly throughout the Development, including consultation with the nearby, adjacent landowners, sensitive receivers,	Noted in Section 5.3 of OEMP, version 5.	Compliant

Condition	Requirement	Tracking	Compliant/Not Compliant/Not triggered
	relevant regulatory authorities, Registered Aboriginal Parties and other interested stakeholders.		
B84	Prior to the commencement of operations, the Applicant must prepare a Conceptual Decommissioning Management Plan (CDMP) for the Development to the satisfaction of the Secretary. The plan must form part of the OEMP required by Condition C4. The CDMP must: (a) include a schedule for the decommissioning of the Development; (b) detail how the following would be achieved: (i) ensure the site is left in a safe, stable and non-polluting manner; (ii) removal of all waste from the site in a lawful manner; (iii) restoration of the site so that the contamination status is no worse than that described in the Site Audit Report -Former EMD Facility Mayfield West, prepared for Delta EMD, prepared by Environ Australia Pty Ltd, November 2009; and (iv) ensure public safety is maintained. (c) include procedures for notification of the surrounding landowners; (d) include procedures for safe removal of any machinery and structures; (e) include measures to mitigate any environmental impacts associated with the removal of the Development; (f) include details of monitoring that would be undertaken during the decommissioning of the	Appendix I of OEMP, version 5	Compliant

Condition	Requirement	Tracking	Compliant/Not Compliant/Not triggered
	Development; and (g) be reviewed 12 months prior to the closure of the site to the satisfaction of the Secretary.		
C1	<p>The Applicant must prepare a Construction Environmental Management Plan (CEMP) to the satisfaction of the Secretary. The CEMP must:</p> <p>(a) be approved by the Secretary prior to the commencement of construction;</p> <p>(b) identify the statutory approvals that apply to the Development;</p> <p>(c) describe all activities to be undertaken on the site during construction of the Development, including a clear indication of construction stages in particular how the sealing works will be staged and any associated impacts on operation, construction of surface water infrastructure must also be addressed; (d) outline all environmental management practices and procedures to be followed during construction works associated with the Development;</p> <p>(e) detail how unexpected finds, traffic, erosion and sedimentation and noise will be managed;</p>		Compliant

Condition	Requirement	Tracking	Compliant/Not Compliant/Not triggered
	<p>(f) include a complaints handling procedure;</p> <p>(g) detail how the environmental performance of the construction works will be monitored, and what actions will be taken to address identified adverse environmental impacts; and</p> <p>(h) describe the roles and responsibilities for all relevant employees involved in construction works associated with the Development.</p>		
C2	As part of the CEMP required under Condition C1 of this consent, the Applicant must include the following: (a) Erosion and Sediment Control Plan (see Condition B16); (b) Unexpected Finds Protocol (see Condition B79).		Compliant
C3	The Applicant must carry out the construction of the Development in accordance with the CEMP approved by the Secretary (and as revised and approved by the Secretary from time to time), unless otherwise agreed by the Secretary.		Compliant
C4	The Applicant must prepare an Operational Environmental Management Plan (OEMP) to the satisfaction of the Secretary. The OEMP must:	a) Approved 25/09/2018	Compliant

Condition	Requirement	Tracking	Compliant/Not Compliant/Not triggered
	<p>(a) be approved by the Secretary prior to the commencement of operations;</p> <p>(b) be prepared by a suitably qualified and experienced expert;</p> <p>(c) provide the strategic framework for environmental management of the Development;</p> <p>(d) identify the statutory approvals that apply to the Development;</p> <p>(e) describe the role, responsibility, authority and accountability of all key personnel involved in the environmental management of the Development;</p> <p>(f) describe the procedures that would be implemented to:</p> <p>(i) keep the local community and relevant agencies informed about the operation and environmental performance of the Development;</p> <p>(ii) receive, handle, respond to, and record complaints;</p> <p>(iii) resolve any disputes that may arise;</p> <p>(iv) respond to any non-compliance; and</p>	<p>b) Prepared by EMM Consulting and Benedict Recycling Operations Planning Support Manager</p> <p>c) Noted in Section 2 of OEMP, version 5</p> <p>d) Noted in Section 2 of OEMP, version 5</p> <p>e) Noted in Section 5.1 of OEMP, version 5</p> <p>f) Noted in Section 5 of OEMP, version 5</p> <p>g) Noted in Appendices D-G & I of OEMP, version 5</p>	

Condition	Requirement	Tracking	Compliant/Not Compliant/Not triggered
	(v) respond to emergencies and provide an Emergency Response Plan; (g) include the following environmental management plans: (i) Waste Management Plan (see Condition B13); (ii) Surface Water Characterisation and Mitigation Plan (see Condition B33); (iii) Operational Traffic and Pedestrian Management Plan (see Condition B50); (iv) Air Quality Management Plan (see Condition B57); and (v) Conceptual Decommissioning Management Plan (see Condition B84).		
C5	The Applicant must carry out the construction of the Development in accordance with the OEMP approved by the Secretary (and as revised and approved by the Secretary from time to time), unless otherwise agreed by the Secretary.	Noted in OEMP, version 5.	Compliant
C6	The Applicant must submit a Compliance Register Table to the Secretary with any Environmental Management Plans,	Appendix A of OEMP, version 5	Compliant

Condition	Requirement	Tracking	Compliant/Not Compliant/Not triggered
	which details where the relevant conditions have been addressed within the Environmental Management Plan.		
C7	<p>The Applicant must ensure that the environmental management plans required under Condition C4 of this consent are prepared by a suitably qualified person or persons in accordance with best practice and include:</p> <p>(a) detailed baseline data; NSW Government 16 Mayfield West Resource Recovery Facility Department of Planning and Environment (SSD 7698)</p> <p>(b) a description of:</p> <p>(i) the relevant statutory requirements (including any relevant approval, licence or lease conditions);</p> <p>(ii) any relevant limits or performance measures/criteria; and</p> <p>(iii) the specific performance indicators that are proposed to be used to judge the performance of, or guide the implementation of, the Development or any management measures;</p>	Appendices D-G & I of OEMP, version 5	Compliant

Condition	Requirement	Tracking	Compliant/Not Compliant/Not triggered
	<p>(c) a description of the management measures that would be implemented to comply with the relevant statutory requirements, limits or performance measures/criteria;</p> <p>(d) a program to monitor and report on the:</p> <p>(i) impacts and environmental performance of the Development; and</p> <p>(ii) effectiveness of any management measures (see (c) above)</p> <p>(e) a contingency plan to manage any unpredicted impacts and their consequences;</p> <p>(f) a program to investigate and implement ways to improve the environmental performance of the Development over time;</p> <p>(g) a protocol for managing and reporting any:</p> <p>(i) incidents;</p> <p>(ii) complaints;</p> <p>(iii) non-compliances with statutory requirements; and</p>		

Condition	Requirement	Tracking	Compliant/Not Compliant/Not triggered
	(iv) exceedances of the impact assessment criteria and/or performance criteria; and (h) a protocol for periodic review of the plan.		
C8	<p>Within three months of:</p> <p>(a) approval of a modification;</p> <p>(b) approval of an annual review under Condition C9; (c) submissions of an incident report under Condition C11; or</p> <p>(d) completion of an audit under Condition C13.</p> <p>the Applicant must review, and if necessary revise, the strategies, plans, and programs required under this consent to the satisfaction of the Secretary.</p> <p>Note: This is to ensure the strategies, plans and programs are updated on a regular basis, and incorporate any recommended measures to improve the environmental performance of the Development.</p>	Noted in Section 6 of OEMP, version 5	Compliant

Condition	Requirement	Tracking	Compliant/Not Compliant/Not triggered
C9	<p>Each year, the Applicant must review the environmental performance of the Development to the satisfaction of the Secretary. This review must:</p> <p>(a) describe the development that was carried out in the previous calendar year, and the Development that is proposed to be carried out over the next year;</p> <p>(b) provide a conditions compliance report which tracks the compliance of the development with the conditions of this approval;</p> <p>(c) include a comprehensive review of the monitoring results and complaints records of the Development over the previous calendar year, which includes a comparison of these results against the:</p> <p>(i) the relevant statutory requirements, limits or performance measures/criteria;</p> <p>(ii) requirements of any plan or program required under this consent;</p> <p>(iii) the monitoring results of previous years; and</p> <p>(iv) the relevant predictions in the EIS;</p>	Report to be submitted by 31 March 2022 for previous calendar year i.e. 01/01/2021 – 31/12/2021	Compliant

Condition	Requirement	Tracking	Compliant/Not Compliant/Not triggered
	<p>(d) detail and provide evidence for the number of days crushing and the 24-hour waste receipt operations has occurred;</p> <p>(e) identify any non-compliance over the last year, and describe what actions were (or are being) taken to ensure compliance;</p> <p>(f) identify any trends in the monitoring data over the life of the Development;</p> <p>(g) identify any discrepancies between the predicted and actual impacts of the Development, and analyse the potential cause of any significant discrepancies; and</p> <p>(h) describe what measures will be implemented over the next year to improve the environmental performance of the Development.</p>		
C10	The Applicant must notify the Secretary and any other relevant agencies of any incident or potential incident with actual or potential significant off-site impacts on people or the biophysical environment associated with the Development immediately after the Applicant becomes aware of the incident.	Noted in Section 5.4 and Section 6 of OEMP, version 5	Not Triggered

Condition	Requirement	Tracking	Compliant/Not Compliant/Not triggered
C11	Within seven days of the date of this incident, the Proponent must provide the Secretary and any relevant agencies with a detailed report on the incident.	Noted in Section 6 of OEMP, version 5.	Not Triggered
C12	The Applicant must provide regular reporting on the environmental performance of the Development on its website, in accordance with the reporting arrangements in any plans or programs approved under the conditions of this consent.	Noted in Section 5.3 of OEMP, version 5	Compliant
C13	Within one year of the commencement of operations, and every three years thereafter, unless the Secretary directs otherwise, the Applicant must commission and pay the full cost of an Independent Environmental Audit of the Development. This audit must: (a) be conducted by a suitably qualified, experienced and independent team of experts whose appointment has been endorsed by the Secretary; (b) include consultation with the relevant agencies; (c) assess the environmental performance of the Development and assess whether it is complying with the requirements in this consent, and any other relevant approvals, relevant EPL(s) (including any assessment, plan or program required under these approvals); (d) review the adequacy of any approved strategy, plan or program required under the abovementioned consents; and (e)	Audit was commissioned by 25/09/2019.	Compliant

Condition	Requirement	Tracking	Compliant/Not Compliant/Not triggered
	recommend measures or actions to improve the environmental performance of the Development, and/or any strategy, plan or program required under these consents. Note: This audit team must be led by a suitably qualified auditor and include relevant experts in any other fields specified by the Secretary.		
C14	Within three months of commissioning this audit, or as otherwise agreed by the Secretary, the Applicant must submit a copy of the audit report to the Secretary, together with its response to any recommendations contained in the audit report.	Report was submitted by due date 25/12/2019. A copy of the audit report can be found on the Benedict website.	Compliant
C15	The Applicant must: (a) make copies of the following publicly available on its website: (i) the documents referred to in Condition A2; (ii) all current statutory approvals for the Development; (iii) all approved strategies, plans and programs required under the conditions of this consent;	https://www.benedict.com.au/about/policies-compliance/ under the tab 'Information relating to Mayfield West'.	Compliant

Condition	Requirement	Tracking	Compliant/Not Compliant/Not triggered
	<p>(iv) a comprehensive summary of the monitoring results of the Development, reported in accordance with the specifications in any conditions of this consent, or any approved plans and programs;</p> <p>(v) a complaints register updated on a monthly basis; (vi) the annual reviews of the Development;</p> <p>(vii) any independent environmental audit of the Development and the Applicant's response to the recommendations in any audit; and</p> <p>(viii) any other matter required by the Secretary</p> <p>(b) keep this information up to date, to the satisfaction of the Secretary</p>		