

# BENEDICT



BENEDICT INDUSTRIES  
BENEDICT SAND & GRAVEL  
BENEDICT RECYCLING

WHAT SYDNEY'S MADE OF®

[WWW.BENEDICT.COM.AU](http://WWW.BENEDICT.COM.AU)



## COMPANY PROFILE

### BENEDICT SAND & GRAVEL

DELIVERING TO THE GREATER SYDNEY REGION & NSW COUNTRY

### BENEDICT SANDS

MENANGLE

### BENEDICT SANDS

SANDY POINT

### BENEDICT SANDS

MITTAGONG

### APPIN SANDS

APPIN

### COWRA QUARTZ

COWRA

### BENEDICT RECYCLING PTY LTD

CHIPPING NORTON / BELROSE / NEWCASTLE / WOLLONGONG/  
COMING SOON: SMEATON GRANGE

### MAJOR DEVELOPMENT PROJECTS

GEORGES COVE VILLAGE & MARINA at Moorebank  
THE CREAMERY at Menangle

The Benedict Industries group of companies is a Sydney-based, family owned and managed Quarrying, Resources and Recycling Company.

Established in 1966, Benedict grew from a Haulage Contractor to one of the largest resellers of quarried materials in NSW and with facilities in Chipping Norton, Belrose, Newcastle and Wollongong, Benedict is increasing its market share in the Waste and Recycling industry too.

In 1978 the Company expanded into mining, acquiring a large sand resource at Chipping Norton (which it extracted until 1999) before embarking on a course of expanding its resource base that continues today.

The Company continues to acquire and develop new deposits for extraction throughout the Sydney region and supplies a comprehensive range of Sands, Soils, Sandstone, Decorative Aggregates and Recycled products.

### Since 1991, Benedict has:

- acquired Menangle Sand & Soil Pty Ltd
- acquired Warringah Gravel & Stone Supplies
- established Benedict Recycling Pty Ltd
- acquired Mittagong Quarry
- acquired Cowra Quartz Quarry
- established Appin Sands  
(50/50 Joint Venture with Pacsons Quarries)
- acquired Sandy Point Quarry (near Liverpool)
- established Capital Recycling Solutions  
(Canberra)





## COMPANY PROFILE

---

### **Benedict Sand & Gravel**

Major wholesaler / reseller of quarried, recycled and landscaping products from both Company owned and external quarries, with an in-house distribution and delivery network, delivering to the greater Sydney Region and NSW Country.

### **Benedict Sands – Menangle**

Sand and Soil extraction and processing. Sydney's largest supplier of soils, special golf course and bowling green blends, garden mixes and specialised sands. Controls more than 70% of Sydney's approved topsoil reserves.

### **Benedict Sands – Belrose**

This Sandstone quarry has operated since 1966. Products include; sandstone products, screened sands, recycled aggregates, road bases, soils and garden mixes. And additionally it serves as a construction and demolition waste Recycling Facility.

### **Benedict Sands – Sandy Point**

This sandstone deposit has vast reserves. Available products include a range of

sandstone products including Washed Concrete and Construction Sands, Armour rock, gabion spalls, landscaping rocks and pebbles as well as a range of crushed products. It will play an increasingly critical part in construction sand supply given its centrality to the Sydney market.

### **Benedict Sands - Mittagong**

This quarry produces concrete, asphalt, construction and brick sands for the Southern Highlands, South Coast and Southern Metropolitan Sydney. Acquired in December 2000, this Benedict Quarry has 25 years worth of remaining resources.

### **Appin Sands – Appin**

This joint venture with Pacsons Quarries produces washed sands, brickie sands, soil blends and sandstone aggregates, and has 20 years worth of remaining reserves.

### **Benedict Sands – Cowra Quartz**

This Quarry produces high quality decorative white and gold quartz pebble as well as coarse and fine washed sands.

### **Benedict Recycling**

The main recycling facility is located at Riverside Road, Chipping Norton. This resource recovery and waste management facility commenced operation in March 2008.

Feedstocks such as construction and demolition materials, commercial and industrial wastes as well as residues from other recycling facilities are sorted and recycled. We are currently investigating a range of innovative processes that will permit us to recycle problematic, currently landfilled wastes such as tyres, plastics, engineered timber, and quarantine waste.

Benedict Recycling has locations at:

- Belrose
- Chipping Norton
- Newcastle
- Wollongong
- Smeaton Grange (Coming Soon)





## QUALITY

Benedict has adopted a company-wide Quality approach to all of the company's operations. The basis for which is the AS/NZS ISO9001 (2000) Quality Management System that introduces new customer satisfaction and end product conformity objectives to preceding Australian Standards.

Our Quality objective is to consistently supply our customers a quality of service and product that meets or exceeds their needs and expectations.

We believe this is realistic and achievable and have adopted the approach of 'doing the job right every time and on time'.

We aim to provide reliable technical and sales support services, with a focus on the production and delivery of quality quarry and landscape products to our customers.

Along with this, our objective is to use the company's Quality Management System to assist in achieving and exceeding our business goals and objectives.

Commitment to our policy and objectives is maintained by conducting training of all staff in regard to this policy and its subsequent Quality Manual, conducting reviews, internal audits, and other training and activities such as correction or prevention of non-conformities.

Quality, and thus customer satisfaction, is our focus.

**FLOYDE GILBERT**  
QA MANAGER



## OCCUPATIONAL HEALTH & SAFETY

We are committed to providing the safest possible working environment to all persons entering our sites - whether they are employees, contractors, customers or visitors. Benedict promotes a culture where workplace injuries are considered preventable. All of our people share the responsibility for implementing this policy - working together towards a safer workplace.

### **Benedict Policy Objectives**

- Provide and maintain a safe and healthy workplace, safe plant and equipment and safe systems of work so far as practicable;
- Provide the necessary resources, information, instruction and training to enable effective implementation of this policy;
- Allocate Company resources to meet the commitments of the Policy;
- Work to eliminate hazards and practices that could cause incidents, injuries and illnesses;
- Communicate openly with government, and the community on safety issues, and contribute to the development of policies, legislation and regulations that may affect Benedict Operations;
- Involve and consult with all people who work for the Company on Health and Safety issues;
- Clearly define OH&S responsibilities for Managers, Employees and Contractors;
- Ensure that employees and suppliers of goods and services are informed about this policy and made aware of their OH&S responsibilities in relation to Benedict business;

- Ensure that it has management systems to effectively identify, control and monitor safety risks arising from its operations;

In order to uphold this policy, the Company is committed to developing, implementing, maintaining, and updating safe work practices through regular consultation with employees from all levels within the Company, as well as from external sources. It is fundamental that this policy, and the associated safety procedures, can be opened for review, improvement and clarification at any time.

We want our people to go home at day's end safely and uninjured.

**E.A. DUPERE**  
DIRECTOR





## WORKPLACE REHABILITATION

---

**Benedict Industries and its related companies is committed to workplace rehabilitation as a strategy to support the return to work of injured or ill workers as soon as possible.**

**Workplace rehabilitation assists the healing process and provides the best opportunity for an early restoration of an employee's pre-injury or illness function.**

We will achieve this by:

- Prevention of injury and illness by providing a safe and healthy working environment;
- Maintaining and implementing appropriate rehabilitation and return to work procedures;
- Ensuring managers, supervisors, employees and contractors are appropriately trained and informed of their rights and responsibilities under this policy;
- Complying with all applicable acts and regulations relating to workers' compensation and rehabilitation;
- Ensuring rehabilitation commences as soon as possible following an injury or illness in a manner consistent with medical advice;
- Providing suitable transitional duties where practicable, for an injured or ill worker, as an integral part of the injury management / return to work process;
- Consulting with all stakeholders to ensure the rehabilitation process operates smoothly and effectively;
- The development and implementation of applicable injury management programs and plans for injured or ill workers, in line with regulatory requirements.

**DANA DUPERE**  
DIRECTOR





LEAVING THE LAND  
IN BETTER SHAPE THAN  
WHEN WE FOUND IT

BENEDICT REHABILITATED SITE - Heron Park

## ENVIRONMENTAL

---

It is Benedict policy to achieve a high standard of environmental care in conducting its business as a Resources, Recycling and Quarried Products supply company contributing to society's material needs.

The Benedict approach to environmental management seeks continuous improvement in performance by taking account of evolving scientific knowledge and community expectations in direct consultation with government agencies.

### **Benedict is committed to:**

- Comply with all applicable laws, regulations and standards; uphold the spirit of the law; and where laws do not adequately protect the environment, apply standards that minimise any adverse environmental impacts resulting from its operations, products or services;
- Communicate openly with government and the community on environmental issues, and contribute to the development of policies, legislation and regulations that may affect the Benedict Operations;
- Ensure that its employees and suppliers of goods and services are informed about this policy and aware of their environmental responsibilities in relation to the Benedict business;
- Ensure that it has management systems to identify, control and monitor environmental risks arising from its operations;
- Conduct research and establish programs to conserve resources, minimise wastes, improve processes and protect the environment.



## EXECUTIVE TEAM



**Bob Lyon**  
**CFO**

With over 35 years of experience in the finance industry working in multi-billion dollar businesses, Bob Lyon is the CFO of the Benedict group of companies and serves on the Board of a number of these companies.



**Brett Jarvis**  
**Group Operations Manager**

In 1997, Brett Jarvis started as a Belrose Excavator Operator and then a Quarry Manager at Menangle Sands. He is now the Group Operations Manager at Benedict Industries and oversees operations at all of the Company's quarries.



**Paul Arnold**  
**Operations Manager**  
**- Mittagong & Appin**

Since 1991, Paul Arnold has been the Operations Manager at Mittagong and Appin Quarry that he also owns. Paul has been instrumental in building long term relationships internally and externally resulting in great outcomes for Benedict.



**Elke Dupere Rowan**  
**Group Marketing Manager**

Elke is the Group Marketing Manager at Benedict Industries and brings with her 10 years marketing and general management experience and 15 years experience within Benedict. Elke is responsible for marketing strategies that drive growth for the Benedict Group, as well as PR, Events and Sponsorships.



**Mick Williams**  
**General Manager - Recycling**

Mick brings a wealth of product, sales and industry knowledge to the role of General Manager - Recycling. He started with Benedict in 2003 as Group Sales & Logistics Manager leading a team of internal and external Sales Executives and Managers.



**Dave Connor**  
**Group Sales & Distribution Manager**

In 2001 David started in internal sales, then progressed to external sales and then ex-bin sales manager. David is now the Group Sales and Distribution Manager, leading the external and internal sales teams. David's responsibilities include product and market development, and sales strategy.

## THE BOARD



**Dana Dupere**  
**Co-Managing Director**

Since 1991, Dana Dupere has been the Co-Managing Director of Benedict. Her primary focus is the Group's Sales, Logistics, Finance and Administration functions.



**Ernest Dupere**  
**Co-Managing Director**

Ernest Dupere is the Co-Managing Director of Benedict Industries and is responsible for operations and business development with a focus on applying the latest innovative technologies in the industry.



**John Huntley Knox**  
**Non Executive Director**

A Fellow of the Institute of Chartered Accountants, John has practised for over 50 years and specialises in business development, management and tax consultancy.



**Steve Kirby**  
**Non Executive Director**

Steve is Managing Director of Australian Cane Farms Limited, one of Australia's largest sugar cane farm aggregations based near Townsville in Queensland. Steve is also co-founder of SISL Group, a Sydney based agribusiness focused funds manager. Prior to founding SISL in 2005, Steve was a Director of Rothschild Australia. In a 16 year career at Rothschild he held a variety of posts including Head of Structured Finance and Head of Agribusiness.



**Norbert Cornell**  
**Non Executive Director**

Norbert is the founder of accounting firm Accountants.com.au Pty Ltd. Prior to founding Accountants.com.au in 2005, Norbert was a partner with Martin Lane Cornell for fourteen years. He was also a Treasurer for three and a half years at Australian General Electric Limited, a Treasurer for four years at Placer Pacific Limited, a Canadian Mining Company and worked as an auditor for four years at Pricewaterhouse.





## SALES & TECHNICAL REPRESENTATIVES

**Murray Fraser** BSc (Hons)  
Agriculture CPSS

**Allan Culey**  
Civil, Construction, Roads,  
Drainage, Councils

**Ross Whiting**  
Mittagong Sands/Cowra Quartz Sales  
Washed sand & quartz pebble Sales

**Matthew Rooke**  
Sales Executive, Benedict Sand & Gravel

**Mick Crompton**  
Sales Executive, Benedict Sand & Gravel  
Newcastle

**Dean Byrne**  
Sales Executive, Major Projects

**Gay Willis**  
Sales Manager, Recycling

**Brad Morrin**  
Sales Executive, Recycling

**Peter Hill**  
Sales Executive, Recycling

**Dayne Steggle**  
Newcastle Recycling Business Manager

## QUALITY & COMPLIANCE

**Floyde Gilbert**  
QA Manager

**Alycia Campbell**  
Environmental Compliance Manager

## HR & SAFETY

**Joanna Ioannides**  
HR Manager

**Peter Murdocca**  
WHS Manager

## LOGISTICS & ALLOCATIONS

**Natalie Machen**  
Fleet Relationship Officer

**Jill Pidgeon**  
Team Leader

## OPERATIONS

**Peter Mills**  
Operations Manager - Recycling

**Marko Zdrilic**  
Project Manager

**Mark Hutcheson**  
Operations & Technical Support

## SUPPORT SERVICES

**Maria Messina**  
Group Credit Manager

**Silvana Ritlian**  
Group Administration Manager

**Jodi Brock**  
Internal Sales Manager

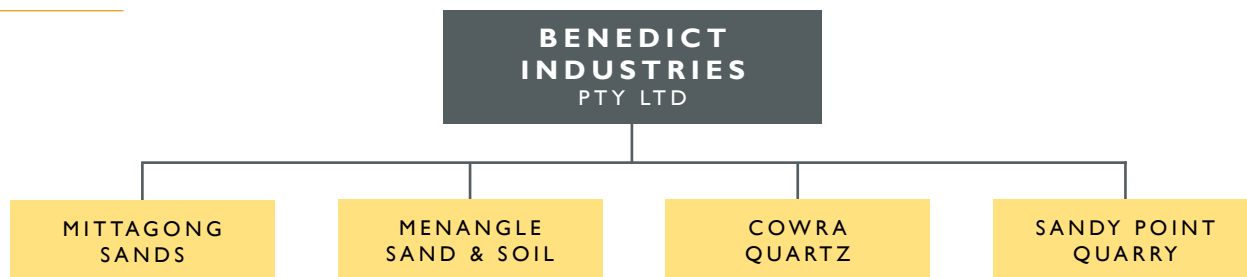
**Lisa Xerri**  
Weighbridge Administration  
Manager, Recycling

**Paul Barker**  
IT Program Director

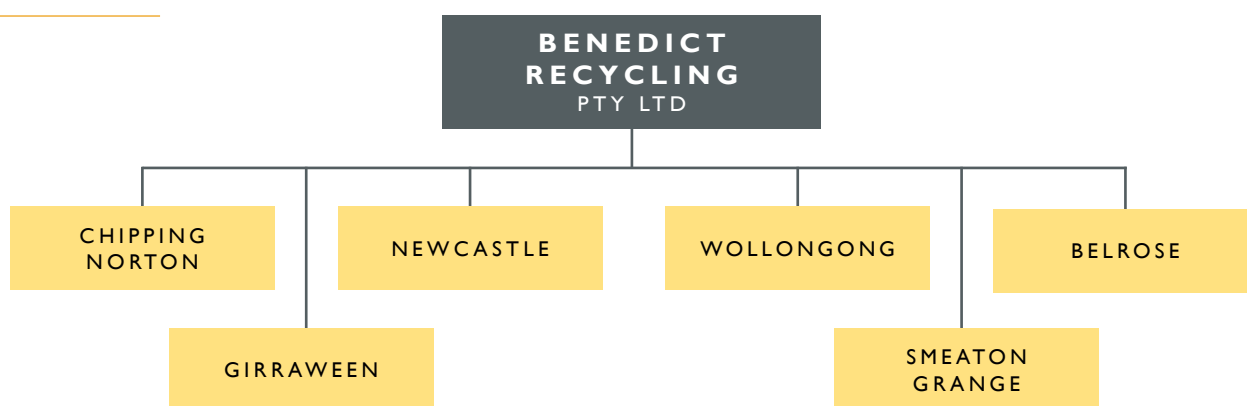


LEADING THE WAY - Benedict Industries Sales Team

## QUARRIES



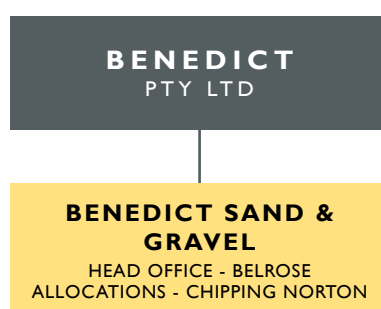
## RECYCLING



## JOINT VENTURES



## SUPPLY & DELIVER







## MAJOR PROJECTS

### **MBK Intermodel**

2017-Current | **CPB Contractors**

Supply in excess of 16,695 tonnes of unbound base, SPL90-250, G/MIXO, BED/SA and 10F/AGG for construction works for container shipping yard.

### **New M5 upgrade**

2019 | **CDSJV (CPB, Dragados, Samsung JV)**

Supply in excess of 14,661 tonnes of variation of different materials for M5 upgrade, including 40F/AGG, unbound base, MBK Clay, BED/SA, 40SUB/R, Rta Mix and 50css.

### **Windsor Bridge Replacement**

2019 | **Georgiou Group**

Supply in excess of 30,000 tonnes of Sandstone Rocks (different sizes), recycled road base, bio retention materials for bridge replacement and associated landscape works.

### **Western Sydney Stadium, Parramatta**

2019 | **HG Sports Turf**

Supply in excess of 5,000 tonnes of SmartMix® 1 (Turf Rootzone - Active High Traffic Turf) for construction of reinforced turf profile for the new Stadium.

### **Sydney Light Rail**

2017 | **Acciona**

Supply of Stabilised Sand and DGB, SmartMix® 3 (40mm Structural Soil), SmartMix® 6 (Native Garden Soil Mix) and SmartMix® 7 (Native Garden Sub-soil Mix) in excess of 20,000 tonnes.

### **Tuggerah Regional Sports Park**

Supply of 36,000 tonnes of T/S2 ex Newcastle to Tuggerah Regional Sports Park for the construction of sports fields.

### **Northwest Rapid Transit**

2018 | **Glascott Landscapes**

Supply in excess of 100,000 tonnes of FERT50, T/S2 ECOFINES for landscaping around new railway stations and railway corridor.

### **Silage Slabs**

2018 | **Moxey Farms**

Supply in excess of 20,000 tonne of C33B/C34 for Sand used in concrete for silage slabs.

### **Northern Beaches Hospital**

2015 | **Woburn Constructions, IDC Contracting, Ford Civil Contracting, Cherrie Civil Engineering**

Supply in excess of 8,000 tonne of pipe and electrical Bedding Sand, Crushed Sandstone, Roadbase and Aggregates.

### **Northern Road Upgrade - Stage 1 & 4**

2016 | **Georgiou Group**

Supply in excess of 20,000 tonne of Bedding Sand and Filter Aggregates.

## SIGNIFICANT SUPPLY CONTRACTS

### MANUFACTURING

Washed Sand ex Appin & Mittagong to Boral Concrete and Concrete for concrete production: 8,000-15,000 tonnes per month. (since 1977)

Fine Sand ex Appin to Fulton Hogan Pty Ltd for Asphalt Production: 4,500 tonnes per month. (since 1994)

Supply of Fine Washed Sand ex Mittagong to Holcim Concrete Plants, approximately 10,000 tonne per month.

### CIVIL

Supply and delivery of various materials and services to local Councils in the Sydney metropolitan region, Southern Highlands, Wollongong and Central Coast.

Current supplier of Compaction Sand for Pipe Embedment (WSA PS – 350, GRADE A), Filling Sand, Roadbase and Topsoil to Sydney Water for the Metropolitan, South Coast, Southern Highlands and Blue Mountains Regions. (since 1993)

Major supplier of Filling Sand to Integral Energy and Energy Australia. (since 1991)

### RAIL

Ongoing cartage of rail ballast and spoil removal for the Rail Infrastructure Corporation (NSW State rail).

### BIO-FILTRATION

Supply in excess of 40,000 tonnes per annum of Certified Bio-Filtration materials, including SmartMix® 9 (Biofiltration Filter Media), SmartMix® 10 (Biofiltration Transition Sand) and SmartMix® 11 (NoFines Drainage Gravel).

### LANDSCAPING

Supply of Ecofines Timber Mulch into retail and commercial landscape sectors. In excess of 20,000 m³ per annum.

Supply of over 50,000 tonnes of Top-dressing materials ex Menangle Sands annually to various Sydney Councils.

**FIRST CHOICE  
FOR QUARRIED AND  
RECYCLED PRODUCTS**





## WHERE TO FIND US

### HEAD OFFICE

#### Sales & Distribution

11 Narabang Way, Austlink Park  
Belrose NSW 2085

PO Box 431  
Frenchs Forest NSW 1640

### DIRECT NUMBERS

Sales & Orders	9986 3500
Allocations	8761 0099
Recycling Head Office	8761 0000
Accounts Receivable	9986 3755
Accounts Payable	9986 3501

### BENEDICT RECYCLING

#### Chipping Norton

33-39 Riverside Road  
Chipping Norton NSW 2170

PO Box 10  
Moorebank NSW 2170

## BENEDICT RECYCLING

### BENEDICT RECYCLING BELROSE

End of Challenger Drive,  
Belrose NSW

**Manager** Peter McClatchey  
**Phone** (02) 9450 2512

**Operating Hours**  
**MON - FRI:** 6am - 5pm  
**SAT:** 6am - 1pm



### BENEDICT RECYCLING CHIPPING NORTON

33-39 Riverside Road,  
Chipping Norton NSW

**Manager** Adam Springfield  
**Phone** (02) 8761 0000

**Operating Hours**  
**MON - FRI:** 6am - 6pm  
**SAT:** 6am - 2pm  
**SUN:** 8am - 2pm



### BENEDICT RECYCLING NEWCASTLE

1a McIntosh Drive,  
Mayfield West NSW

**Manager** Heath Nowlan  
**Phone** (02) 4960 9977

**Operating Hours**  
**MON - FRI:** 6am - 5.30pm  
**SAT:** 6am - 2pm



### BENEDICT RECYCLING WOLLONGONG

171-173 Five Islands Road,  
Unanderra NSW

**Manager** Dean Springfield  
**Phone** (02) 4274 1322

**Operating Hours**  
**MON - FRI:** 6am - 4.30pm  
**SAT:** 6am - 2pm



## BENEDICT QUARRIES

### APPIN SANDS APPIN

Appin Road, Appin NSW

**Manager** Mark Arnold  
**Phone** 0425 789 877

**Operating Hours**  
**MON - FRI:** 6am - 4pm  
**SAT:** 6am - 12pm

### BENEDICT SANDS COWRA QUARTZ

Glen Logan Road, Cowra NSW

**Manager** Mark Morris  
**Phone** 0425 282 207

**Operating Hours**  
**MON - FRI:** 6.30am - 4pm  
**SAT:** 6.30am - 12pm

### BENEDICT SANDS MENANGLE

31 Menangle Road, Menangle NSW

**Manager** Michael Holz  
**Phone** (02) 4633 8239

**Operating Hours**  
**MON - FRI:** 6am - 4pm  
**SAT:** 6am - 12pm

### BENEDICT SANDS MITTAGONG

924-926 Wombeyan Caves Road,  
High Range NSW

**Manager** Paul Holz  
**Phone** (02) 4878 5159

**Operating Hours**  
**MON - FRI:** 6am - 4pm  
**SAT:** 6am - 12pm

### BENEDICT SANDS SANDY POINT

14309 Heathcote Road,  
Sandy Point NSW

**Manager** Brett Jarvis  
**Phone** 0425 282 209

**Operating Hours**  
**MON - FRI:** 6am - 4pm  
**SAT:** 6am - 12pm